



2023-2024
www.qllledstrip.com



LED STRIP
CATALOG



200lm/W

High Efficiency

High efficiency strip will ensure the best use



200lm/W high efficiency strips make full use of the power, leave the least power for heat and ensure the most reliable life span. It is worth your choice





QL Light IES TEST REPORT

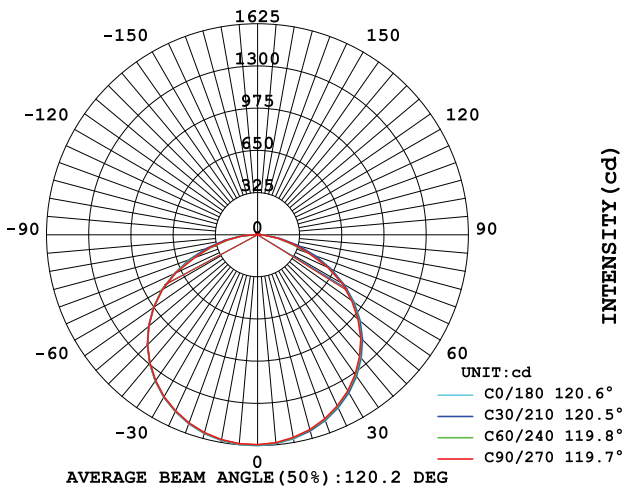
LUMINAIRE PHOTOMETRIC TEST REPORT

Report number: QL20200106-1

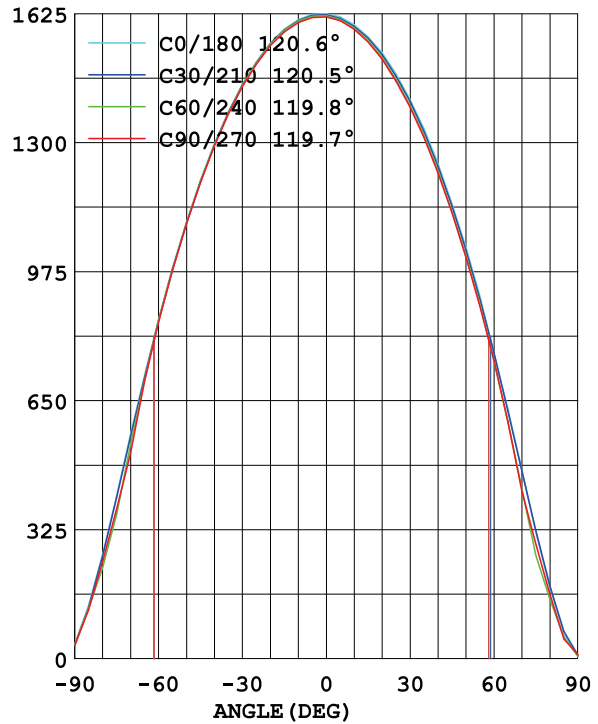
MANUFACTURER: QL LIGHT		
Address: 5F, BLDG A, Huilongda Ind. Zone, Shilongzai, Shiyan Town, Baoan Dist., Shenzhen, Guangdong, China		
NAME: QL-F5050A72-N-24C-HE	TYPE: LED strip	WEIGHT:
SPECIFICATION: 5050 200lm/w	DIMENSION: 1000mm x 15mm	SERIAL No.: 01

DATA OF LAMP		I _{max} (cd)	1625	S/MH (C0/180)	1.32
MODEL	5050	EFFICIENCY (%)	100.0	S/MH (C90/270)	1.32
NOMINAL POWER (W)	25	TOTAL FLUX (lm)	5072.7	Voltage (V)	24.00
RATED VOLTAGE (V)	24	EFFICIENCY (lm/W)	200.5	Current (A)	1.054
NOMINAL FLUX (lm)	5072.7	η up (%)	1.6	Power (W)	25.29
LAMPS QUANTITY	1	η down (%)	98.4	Power Factor (PF)	1.000
TEST VOLTAGE (V)	24.0	Effective Flux (lm)	4927.9	EEL	0.070

LUMINOUS INTENSITY DISTRIBUTION



LUMINOUS INTENSITY DISTRIBUTION



Test System: HOPOO HPG1800
 Temperature: 21 DEG
 Operators: RD
 Test Date: 01-06-2020

Test Set: 5.0 deg/s C-Gamma (TYPE C)
 Humidity: 65.0%
 Test Distance: 8.000 m
 Remarks: 200lm/w



200lm/W SMD5050 LED Strip

EcoDesign



- 200 lm/W
- 5000 lm/m, CC Version

Features:

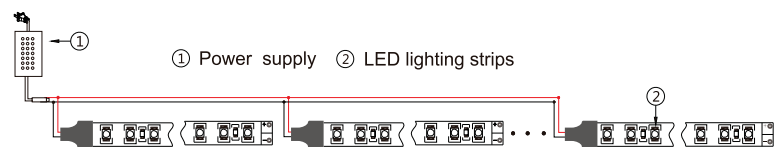
- Light Efficiency: 200lm/W
- LED: SMD5050
- Constant Current Version
- LED Qty: 144LED/m, 64LED/m
- Power: 25W/m, 11.5W/m
- Voltage: DC24V
- Color: Warm White, Nature White, Pure White
- Waterproof: IP20, IP67
- Comply with the European ErP EcoDesign regulation.



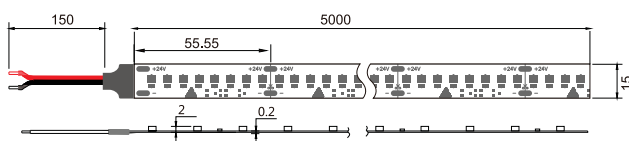
Applications:

- Cove Lighting
- Architectural decorative lighting
- Archway, canopy and bridge Lighting
- Auditorium walkway lighting
- Backlighting for signage letters
- Channel letter lighting

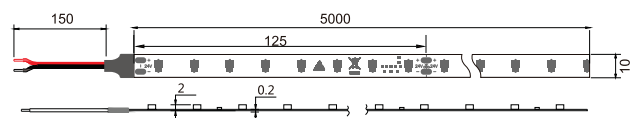
Connections:



Dimension Drawings:



144LED/m Version Unit:mm



64LED/m Version Unit:mm

Model No.	LED Type	CC/CV	LED Qty	Power (W/m)	Voltage (DC)	CRI (Ra)	PCB Width	Cutting (mm)	Water proof	Color	(CT:K)	Lumen (lm/m)	Light Efficiency	Energy efficiency class
QL-F5050X72-WW-24C-HE	SMD5050	CC Version	144	25W	24V	≥80	15mm	55.55mm 8LED	IP20/IP67	□ Warm White	2700K	4500-4700	200lm/W	B/C
QL-F5050X72-W-24C-HE										□ Warm White	3000K	4700-4900		
QL-F5050X72-N-24C-HE										□ NatureWhite	4000K	4900-5100		
QL-F5050X72-P-24C-HE										□ Pure White	6000K	4900-5100		
QL-F5050X32-WW-24C-HE	SMD5050	CC Version	64	11.5W	24V	≥80	10mm	125mm 8LED	IP20/IP67	□ Warm White	2700K	2000-2100	200lm/W	B/C
QL-F5050X32-W-24C-HE										□ Warm White	3000K	2100-2200		
QL-F5050X32-N-24C-HE										□ NatureWhite	4000K	2200-2300		
QL-F5050X32-P-24C-HE										□ Pure White	6000K	2200-2300		

Remark: X stands for waterproof version, A stands for IP20 non-waterproof version, C stands for IP67 waterproof version.
CC means Constant Current version, CV means Constant Voltage version.



180lm/W SMD2835 LED Strip

EcoDesign



- 180 lm/W
- 4000 lm/m, CC/CV Version

Features:

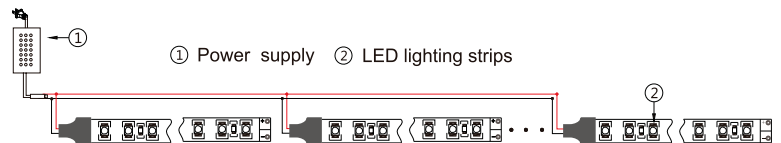
- Light Efficiency: 180lm/W
- LED: SMD2835
- Constant Current Version
- LED Qty: 128LED/m, 64LED/m
- Power: 22W/m, 11.5W/m
- Voltage: DC24V
- Color: Warm White, Nature White, Pure White
- Cutting: 8LED cutting for DC24V Version
- Waterproof: IP20, IP67
- Comply with the European ErP EcoDesign regulation.



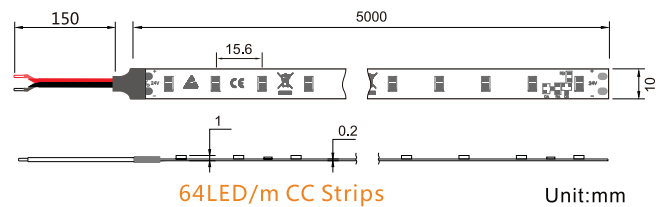
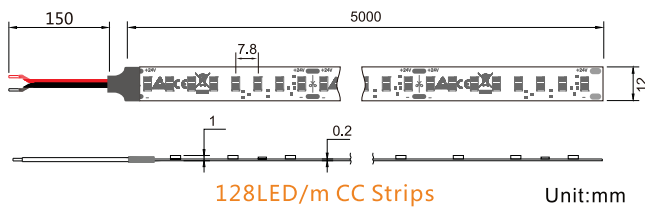
Applications:

- Cove Lighting
- Architectural decorative lighting
- Archway, canopy and bridge Lighting
- Auditorium walkway lighting
- Backlighting for signage letters
- Channel letter lighting

Connections:



Dimension Drawings:



Model No.	LED Type	CC/CV	LED Qty	Power (W/m)	Voltage (DC)	CRI (Ra)	PCB Width	Cutting (mm)	Water proof	Color	(CT:K)	Lumen (lm/m)	Light Efficiency	Energy efficiency class
QL-F2835X64-WW-24C-HE	SMD2835	CC Version	128	22W	24V	≥80	12mm	62.5mm 8LED	IP20 IP67	Warm White	2700K	3600-3800	180lm/W	C/D
QL-F2835X64-W-24C-HE										Warm White	3000K	3800-4000		
QL-F2835X64-WN-24C-HE										Warm White	3500K	3800-4000		
QL-F2835X64-N-24C-HE										NatureWhite	4000K	4000-4200		
QL-F2835X64-NP-24C-HE										NatureWhite	5000K	4000-4200		
QL-F2835X64-P-24C-HE										Pure White	6000K	4000-4200		
QL-F2835X64-WW-24-HE	SMD2835	CV Version	128	22W	24V	≥80	10mm	62.5mm 8LED	IP20 IP67	Warm White	2700K	3600-3800	180lm/W	C/D
QL-F2835X64-W-24-HE										Warm White	3000K	3800-4000		
QL-F2835X64-WN-24-HE										Warm White	3500K	3800-4000		
QL-F2835X64-N-24-HE										NatureWhite	4000K	4000-4200		
QL-F2835X64-NP-24-HE										NatureWhite	5000K	4000-4200		
QL-F2835X64-P-24-HE										Pure White	6000K	4000-4200		
QL-F2835X32-WW-24C-HE	SMD2835	CC Version	64	11.5W	24V	≥80	10mm	125mm 8LED	IP20 IP67	Warm White	2700K	1800-1900	180lm/W	C/D
QL-F2835X32-W-24C-HE										Warm White	3000K	1900-2000		
QL-F2835X32-WN-24C-HE										Warm White	3500K	1900-2000		
QL-F2835X32-N-24C-HE										NatureWhite	4000K	2000-2100		
QL-F2835X32-NP-24C-HE										NatureWhite	5000K	2000-2100		
QL-F2835X32-P-24C-HE										Pure White	6000K	2000-2100		

150lm/W SMD2835 LED Strip

EcoDesign



Features:

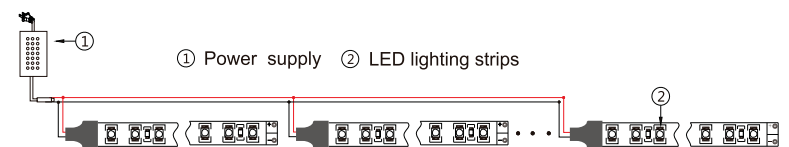
- Light Efficiency: 150lm/W
- LED: CRI≥90 SMD2835
- Constant Current Version
- LED Qty: 224LED/m, 128LED/m, 64LED/m
- Power: 13W/m, 7.5W/m, 3.7W/m
- Voltage: DC24V
- Color: Warm White, Nature White, Pure White
- Waterproof: IP20, IP67
- With two chips inside
- Comply with the European ErP EcoDesign regulation.



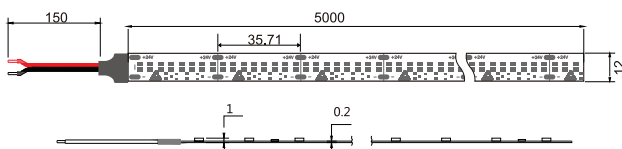
Applications:

- Cove Lighting
- Architectural decorative lighting
- Archway, canopy and bridge Lighting
- Auditorium walkway lighting
- Backlighting for signage letters
- Channel letter lighting

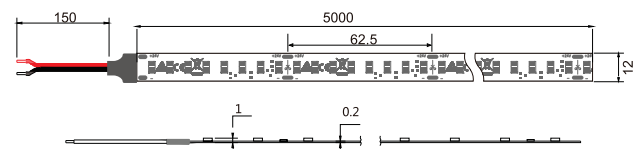
Connections:



Dimension Drawings:



224LED/m Version Unit:mm



128LED/m Version Unit:mm

Model No.	LED Type	CC/CV	LED Qty	Power (W/m)	Voltage (DC)	CRI (Ra)	PCB Width	Cutting (mm)	Water proof	Color	(CT:K)	Lumen (lm/m)	Light Efficiency	Energy efficiency class
QL-F2835X112SA-WW-24C-HE	SMD2835	CC Version	224	13W	24V	≥90	12mm	35.71mm 8LED	IP20 IP67	□ Warm White	2700K	1700-1800	150lm/W	D/E
QL-F2835X112SA-W-24C-HE										□ Warm White	3000K	1800-1900		
QL-F2835X112SA-N-24C-HE										□ NatureWhite	4000K	1900-2000		
QL-F2835X112SA-P-24C-HE										□ Pure White	6500K	1900-2000		
QL-F2835X64SA-WW-24C-HE	SMD2835	CC Version	128	7.5W	24V	≥90	12mm	62.5mm 8LED	IP20 IP67	□ Warm White	2700K	1000-1050	150lm/W	D/E
QL-F2835X64SA-W-24C-HE										□ Warm White	3000K	1050-1100		
QL-F2835X64SA-N-24C-HE										□ NatureWhite	4000K	1100-1150		
QL-F2835X64SA-P-24C-HE										□ Pure White	6500K	1100-1150		
QL-F2835X32SA-WW-24C-HE	SMD2835	CC Version	64	3.7W	24V	≥90	10mm	125mm 8LED	IP20 IP67	□ Warm White	2700K	470-500	150lm/W	D/E
QL-F2835X32SA-W-24C-HE										□ Warm White	3000K	500-530		
QL-F2835X32SA-N-24C-HE										□ NatureWhite	4000K	530-560		
QL-F2835X32SA-P-24C-HE										□ Pure White	6500K	530-560		

Remark: X stands for waterproof version, A stands for IP20 version, B and S stands for IP54 version, C stands for IP67 version and D stands for IP68 version
CC means Constant Current version, CV means Constant Voltage version.



150lm/W SMD3528 LED Strip

EcoDesign



Features:

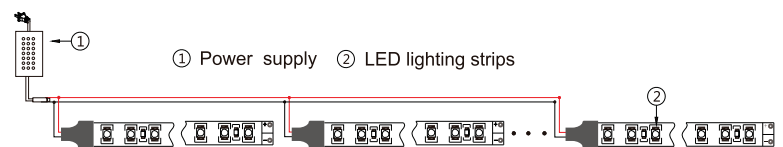
- Light Efficiency: 150lm/W
- LED: SMD3528
- Constant Current Version
- LED Qty: 224LED/m, 144LED/m, 96LED/m
- Power: 13W/m, 8.5W/m, 5.5W/m
- Voltage: DC24V
- Color: Warm White, Nature White, Pure White
- Waterproof: IP20, IP67
- With two chips inside
- Comply with the European ErP EcoDesign regulation.



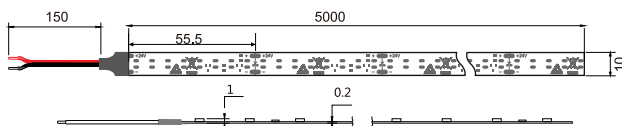
Applications:

- Cove Lighting
- Architectural decorative lighting
- Archway, canopy and bridge Lighting
- Auditorium walkway lighting
- Backlighting for signage letters
- Channel letter lighting

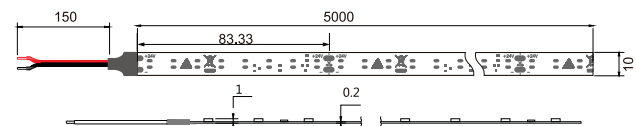
Connections:



Dimension Drawings:



144LED/m Version Unit:mm



96LED/m Version Unit:mm

Model No.	LED Type	CC/CV	LED Qty	Power (W/m)	Voltage (DC)	CRI (Ra)	PCB Width	Cutting (mm)	Water proof	Color	(CT:K)	Lumen (lm/m)	Light Efficiency	Energy efficiency class
QL-F3528X112-WW-24C-HECES	SMD3528	CC Version	224	13W	24V	≥80	12mm	35.71mm 8LED	IP20 IP67	☐ Warm White	2700K	1800-1850	150lm/W	D/E
QL-F3528X112-W-24C-HECES										☐ Warm White	3000K	1850-1900		
QL-F3528X112-N-24C-HECES										☐ NatureWhite	4000K	1900-2000		
QL-F3528X112-P-24C-HECES										☐ Pure White	6000K	1900-2000		
QL-F3528X72-WW-24C-HECES	SMD3528	CC Version	144	8.5W	24V	≥80	10mm	55.55mm 8LED	IP20 IP67	☐ Warm White	2700K	1150-1200	150lm/W	D/E
QL-F3528X72-W-24C-HECES										☐ Warm White	3000K	1200-1250		
QL-F3528X72-N-24C-HECES										☐ NatureWhite	4000K	1250-1300		
QL-F3528X72-P-24C-HECES										☐ Pure White	6000K	1250-1300		
QL-F3528X48-WW-24C-HECES	SMD3528	CC Version	96	5.5W	24V	≥80	10mm	83.33mm 8LED	IP20 IP67	☐ Warm White	2700K	760-790	150lm/W	D/E
QL-F3528X48-W-24C-HECES										☐ Warm White	3000K	790-820		
QL-F3528X48-N-24C-HECES										☐ NatureWhite	4000K	820-850		
QL-F3528X48-P-24C-HECES										☐ Pure White	6000K	820-850		

Remark: X stands for waterproof version, A stands for IP20 version, B and S stands for IP54 version, C stands for IP67 version and D stands for IP68 version
CC means Constant Current version, CV means Constant Voltage version.



150lm/W Samsung SMD5630 LED Strips

EcoDesign



Features:

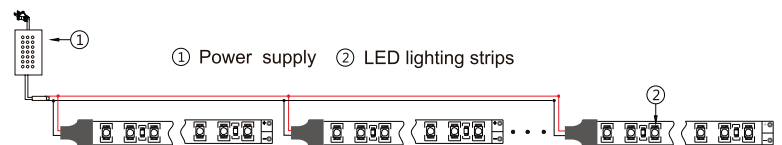
- Light Efficiency: 150lm/W, 130lm/m
- LED: Samsung SMD5630
- Constant Current Version, Constant Voltage Version
- LED Qty: 128LED/m, 126LED/m, 70LED/m, 64LED/m, 32LED/m
- Power: 22W/m, 15W/m, 11.5W/m, 5.7W/m
- Voltage: DC24V
- Color: Warm White, Nature White, Pure White
- Waterproof: IP20, IP67
- Comply with the European ErP EcoDesign regulation.



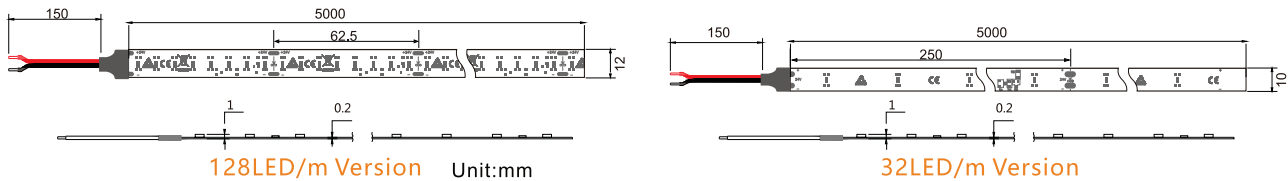
Applications:

- Cove Lighting
- Architectural decorative lighting
- Archway, canopy and bridge Lighting
- Auditorium walkway lighting
- Backlighting for signage letters
- Channel letter lighting

Connections:



Dimension Drawings:



Model No.	LED Type	CC/CV	LED Qty	Power (W/m)	Voltage (DC)	CRI (Ra)	PCB Width	Cutting (mm)	Water proof	Color	(CT:K)	Lumen (lm/m)	Light Efficiency	Energy efficiency class
QL-F5630X64-WW-24C-HE	SMD5630	CC Version	128	22W	24V	≥80	12mm	62.5mm 8LED	IP20 IP67	□ Warm White	2700K	3200-3300	150lm/W	D/E
QL-F5630X64-W-24C-HE										□ Warm White	3000K	3300-3400		
QL-F5630X64-N-24C-HE										□ NatureWhite	4000K	3400-3500		
QL-F5630X64-P-24C-HE										□ Pure White	6000K	3400-3500		
QL-F5630X32-WW-24C-HE	SMD5630	CC Version	64	11.5W	24V	≥80	10mm	125mm 8LED	IP20 IP67	□ Warm White	2700K	1650-1700	150lm/W	D/E
QL-F5630X32-W-24C-HE										□ Warm White	3000K	1700-1750		
QL-F5630X32-N-24C-HE										□ NatureWhite	4000K	1750-1850		
QL-F5630X32-P-24C-HE										□ Pure White	6000K	1750-1850		
QL-F5630X16-WW-24C-HE	SMD5630	CC Version	32	5.7W	24V	≥80	10mm	250mm 8LED	IP20 IP67	□ Warm White	2700K	820-850	150lm/W	D/E
QL-F5630X16-W-24C-HE										□ Warm White	3000K	850-880		
QL-F5630X16-N-24C-HE										□ NatureWhite	4000K	880-920		
QL-F5630X16-P-24C-HE										□ Pure White	6000K	880-920		
QL-F5630X63-WW-24C-SG2	SMD5630	CC Version	126	22W	24V	≥80	12mm	55.5mm 7LED	IP20 IP67	□ Warm White	2700K	2900-3000	130lm/W	E/F
QL-F5630X63-W-24C-SG2										□ Warm White	3000K	3000-3100		
QL-F5630X63-N-24C-SG2										□ NatureWhite	4000K	3100-3200		
QL-F5630X63-P-24C-SG2										□ Pure White	6000K	3100-3200		
QL-F5630X35-WW-24C-SG2	SMD5630	CC Version	70	15W	24V	≥80	10mm	100mm 7LED	IP20 IP67	□ Warm White	2700K	1900-1950	130lm/W	E/F
QL-F5630X35-W-24C-SG2										□ Warm White	3000K	1950-2000		
QL-F5630X35-N-24C-SG2										□ NatureWhite	4000K	2000-2100		
QL-F5630X35-P-24C-SG2										□ Pure White	6000K	2000-2100		

1-Step

MacAdam Ellipse

1-Step MacAdam Ellipse ensure you perfect color uniform

1-Step MacAdam Ellipse LED strip will bring you perfect color uniform.
You won't be worried to see different color from differnt batch of strips.



1-Step CRI ≥ 90 SMD2835 LED Flexible Strips



Specifications:

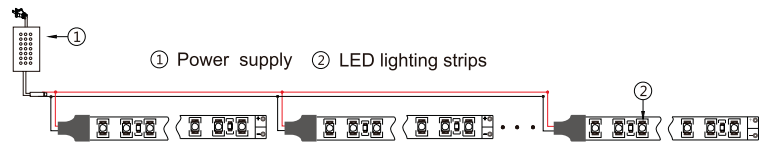
- LED: 1-Step CRI ≥ 90 SMD2835 with two chips
- Constant current version and constant voltage version
- LED Quantity: 60LED/m, 120LED/m
- Power: 14.4W/m, 19.2W/m
- Voltage: DC12V, DC24V
- Color: Warm White, Nature White, Pure White
- Waterproof: IP20, IP67
- Cutting: 6LED cutting for DC24V version and 3LED cutting for DC12V version



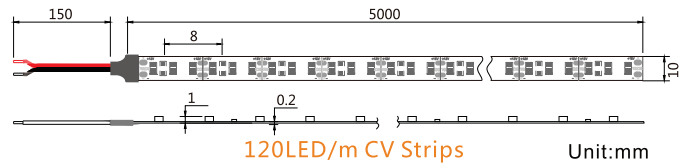
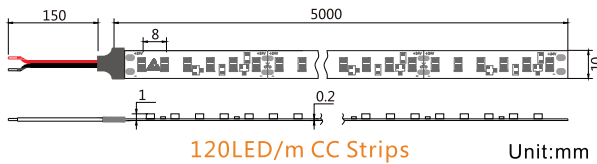
Applications:

- Cove Lighting
- Architectural decorative lighting
- Archway, canopy and bridge edge lighting
- Auditorium walkway lighting
- Backlighting for signage letters
- Channel letter lighting

Connections:



Dimension Drawings:



Model No.	LED Type	CC/CV	LED Qty	Power (W/m)	Voltage	CRI(Ra)	PCB Width	Water-proof	Color	(CT:K)	Lumen (lm/m)
QL-F2835A60SA-W-24C-OS	SMD2835	CC Version	120	19.2W	24V	≥ 90	10mm	IP20	□ Warm White	2700/3000K	1700-1750
□ Nature White									4000-4500K	1750-1800	
□ Pure White									6000-6500K	1800-1850	
QL-F2835X30SA-W-24C-OS	SMD2835	CC Version	60	14.4W	24V	≥ 90	10mm	IP20 IP67	□ Warm White	2700/3000K	1000-1100
□ Nature White									4000-4500K	1100-1200	
□ Pure White									6000-6500K	1200-1300	
QL-F2835A60SA-W-12/24-OS	SMD2835	CV Version	120	19.2W	12V/24V	≥ 90	10mm	IP20	□ Warm White	2700/3000K	1700-1750
□ Nature White									4000-4500K	1750-1800	
□ Pure White									6000-6500K	1800-1850	
QL-F2835X30SA-W-12/24-OS	SMD2835	CV Version	60	14.4W	12V/24V	≥ 90	10mm	IP20 IP67	□ Warm White	2700/3000K	1000-1100
□ Nature White									4000-4500K	1100-1200	
□ Pure White									6000-6500K	1200-1300	

Remark: X stands for waterproof version, A stands for non-waterproof version, C stands for IP67 waterproof version.
CC means constant current version, CV means Constant Voltage Version



1-Step CRI \geq 90 SMD3528 LED Strips

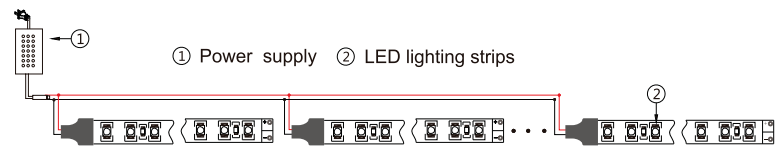


- 1-Step
- Ra+90
- CC/CV Version

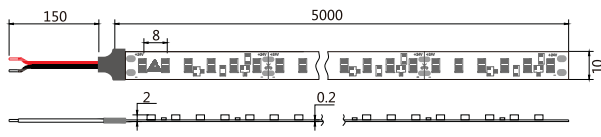
Features:

- LED: 1-Step CRI \geq 90 SMD3528
- Constant Current and Constant Voltage Version
- LED Qty: 240LED/m, 228LED/m, 180LED/m, 120LED/m, 78LED/m, 60LED/m
- Power: 19.2W/m, 18W/m, 14.4W/m, 9.4W/m, 7.2W/m
- Voltage: DC24V and DC12V
- Color: Warm White, Nature White, Pure White
- Waterproof: IP20/IP54/IP67/IP68
- Cutting: 6LED cutting for DC24V version and 3 LED cutting for DC12V version

Connections:

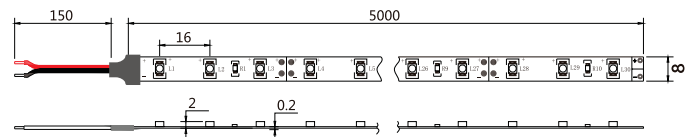


Dimension Drawings:



120LED/m CC Strips

Unit:mm



60LED/m CV Strips

Unit:mm

Model No.	LED Type	CC/CV	LED Qty	Power (W/m)	Voltage	CRI(Ra)	PCB Width	Water-proof	Color	(CT:K)	Lumen (lm/m)
QL-F3528X114SAL-W-24C-OS	SMD3528	CC Version	228	18W	24V	\geq 90	12mm	IP20	Warm White	2700/3000K	1400-1500
Nature White									4000-4500K	1500-1600	
Pure White									6000-6500K	1600-1700	
QL-F3528X60SAL-W-24C-OS	SMD3528	CC Version	120	9.6W	24V	\geq 90	10mm	IP20-IP68	Warm White	2700/3000K	750-820
Nature White									4000-4500K	820-850	
Pure White									6000-6500K	850-900	
QL-F3528X30SAL-W-24C-OS	SMD3528	CC Version	60	4.8W	24V	\geq 90	10mm	IP20-IP68	Warm White	2700/3000K	380-400
Nature White									4000-4500K	400-420	
Pure White									6000-6500K	420-450	
QL-F3528A120SAL-W-24-S1OS	SMD3528	CV Version	240	19.2W	24V	\geq 90	10mm	IP20	Warm White	2700/3000K	1700-1800
Nature White									4000-4500K	1800-1900	
Pure White									6000-6500K	1900-2000	
QL-F3528A90SAL-W-24-OS	SMD3528	CV Version	180	14.4W	24V	\geq 90	10mm	IP20	Warm White	2700/3000K	1000-1100
Nature White									4000-4500K	1100-1200	
Pure White									6000-6500K	1200-1300	
QL-F3528X60SAL-W-12/24-OS	SMD3528	CV Version	120	9.6W	12V/24V	\geq 90	10mm	IP20-IP68	Warm White	2700/3000K	750-820
Nature White									4000-4500K	820-850	
Pure White									6000-6500K	850-900	
QL-F3528X39SAL-W-12/24-OS	SMD3528	CV Version	78	6.3W	12V/24V	\geq 90	8mm	IP20-IP68	Warm White	2700/3000K	480-520
Nature White									4000-4500K	520-550	
Pure White									6000-6500K	550-580	
QL-F3528X30SAL-W-12/24-OS	SMD3528	CV Version	60	4.8W	12V/24V	\geq 90	8mm	IP20-IP68	Warm White	2700/3000K	380-400
Nature White									4000-4500K	400-420	
Pure White									6000-6500K	420-450	

Remark: X stands for waterproof version, A stands for IP20 version, B and S stands for IP54 version, C stands for IP67 version and D stands for IP68 version
CC means Constant Current version, CV means Constant Voltage version.

1-Step CRI \geq 90 SMD2216 LED Strips

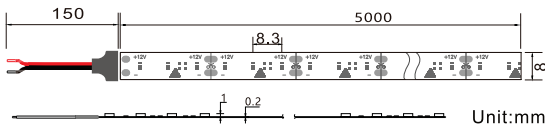
- 1-Step
- Ra+90
- CC/CV Version



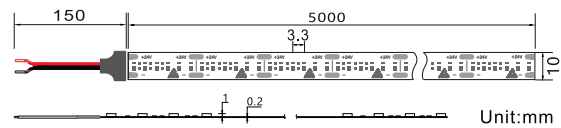
Features:

- LED: 1-Step CRI \geq 90 SMD2216
- Constant Voltage and Constant Current Version
- LED Qty: 480LED/m, 300LED/m, 240LED/m, 180LED/m, 120LED/m, 60LED/m
- Power: 38.4W/m, 24W/m, 19.2W/m, 14.4W/m, 9.6W/m, 4.8W/m
- Voltage: DC12V, DC24V
- Color: Warm White, Nature White, Pure White
- Waterproof: IP20, IP67
- Single-Line Cutting: 6LED for DC24V version, and 3LED for DC12V version

Dimension Drawings:



120LED/m Strips



300LED/m Strips

Model No.	LED Type	CC/CV	LED Qty	Power (W/m)	Voltage	CRI(Ra)	PCB Width	Water-proof	Color	λ (Nm)/(CT:K)	Lumen (lm/m)
QL-F2216X30SA-W-12/24-OS	SMD2216	CV Version	60	4.8W	12V/24V	≥ 90	8mm	IP20 IP67	Warm White	2700/3000/3500K	340-360
Nature White									4000/5000K	370-390	
Pure White									6000-6500K	400-420	
QL-F2216X60SA-W-12/24-OS	SMD2216	CV Version	120	9.6W	12V/24V	≥ 90	8mm	IP20 IP67	Warm White	2700/3000/3500K	680-720
Nature White									4000/5000K	740-780	
Pure White									6000-6500K	800-840	
QL-F2216X90SA-W-12/24-OS	SMD2216	CV Version	180	14.4W	12V/24V	≥ 90	8mm	IP20 IP67	Warm White	2700/3000/3500K	1000-1100
Nature White									4000/5000K	1100-1200	
Pure White									6000-6500K	1200-1300	
QL-F2216X120SA-W-12/24-OS	SMD2216	CV Version	240	19.2W	12/24V	≥ 90	10mm	IP20 IP67	Warm White	2700/3000/3500K	1350-1450
Nature White									4000/5000K	1500-1600	
Pure White									6000-6500K	1600-1700	
QL-F2216X150SA-W-12/24-OS	SMD2216	CV Version	300	24W	12/24V	≥ 90	10mm	IP20	Warm White	2700/3000/3500K	1700-1800
Nature White									4000/5000K	1850-1950	
Pure White									6000-6500K	2000-2100	
QL-F2216X240SA-W-24-OS	SMD2216 Two-Row	CV Version	480	38.4W	24V	≥ 90	15mm	IP20	Warm White	2700/3000/3500K	2700-2800
Nature White									4000/5000K	2900-3000	
Pure White									6000-6500K	3200-3400	
QL-F2216X30SA-W-12/24-4OS	SMD2216	CV Version	60	4.8W	12V/24V	≥ 90	4mm	IP20	Warm White	2700/3000/3500K	340-360
Nature White									4000/5000K	370-390	
Pure White									6000-6500K	400-420	
QL-F2216X60SA-W-12/24-4OS	SMD2216	CV Version	120	9.6W	12V/24V	≥ 90	4mm	IP20	Warm White	2700/3000/3500K	680-720
Nature White									4000/5000K	740-780	
Pure White									6000-6500K	800-840	
QL-F2216X90SA-W-12/24-4OS	SMD2216	CV Version	180	14.4W	12V/24V	≥ 90	4mm	IP20	Warm White	2700/3000/3500K	1000-1100
Nature White									4000/5000K	1100-1200	
Pure White									6000-6500K	1200-1300	
QL-F2216X30SA-W-24C-OS	SMD2216	With IC CC Version	60	4.8W	24V	≥ 90	10mm	IP20 IP67	Warm White	2700/3000/3500K	340-360
Nature White									4000/5000K	370-390	
Pure White									6000-6500K	400-420	
QL-F2216X60SA-W-24C-OS	SMD2216	With IC CC Version	120	9.6W	24V	≥ 90	10mm	IP20 IP67	Warm White	2700/3000/3500K	680-720
Nature White									4000/5000K	740-780	
Pure White									6000-6500K	800-840	
QL-F2216X120TSA-H-12/24-OS	SMD2216	CV Version	240	19.2W	12V/24V	≥ 90	10mm	IP20 IP67	Warm White	2500-6000K	1500-1600
QL-F2216X240TSA-H-12/24-OS	SMD2216 Two-Row	CV Version	480	38.4W	12/24V	≥ 90	12mm	IP20	Warm White	2500-6000K	3000-3200



1-Step CRI ≥ 90 SMD5050 LED Strips



- 1-Step
- Ra+90
- CC/CV Version

Features:

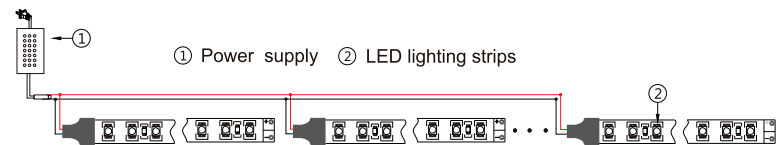
- LED: 1-Step CRI ≥ 90 SMD5050 with two chips
- Constant Current and Constant Voltage Version
- LED Qty: 60LED/m, 30LED/m
- Power: 14.4W/m, 7.2W/m
- Voltage: DC24V and DC12V
- Color: Warm White, Nature White, Pure White
- Waterproof: IP20/IP54/IP67/IP68
- Cutting: 5LED or 6LED cutting for DC24V version and 3LED Cutting for DC12V version



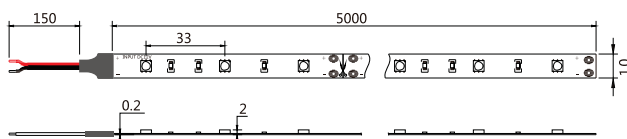
Applications:

- Cove Lighting
- Architectural decorative lighting
- Archway, canopy and bridge Lighting
- Auditorium walkway lighting
- Backlighting for signage letters
- Channel letter lighting

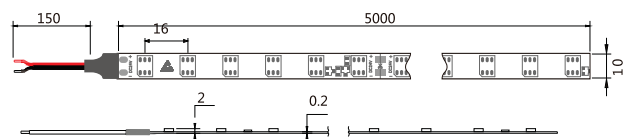
Connections:



Dimension Drawings:



30LED/m CV version Unit:mm



60LED/m CC version Unit:mm

Model No.	LED Type	CC/CV	LED Qty	Power (W/m)	Voltage	CRI(Ra)	PCB Width	Water-proof	Color	(CT:K)	Lumen (lm/m)
QL-F5050X30SA-W-24C-OS	SMD5050	CC Version	60	14.4W	24V	≥90	10mm	IP20	□ Warm White	2700/3000K	900-1000
IP54								□ Nature White	4000-4500K	1000-1100	
IP67								□ Pure White	6000-6500K	1100-1200	
QL-F5050X30SA-N-24C-OS	SMD5050	CV Version	60	14.4W	12V/24V	≥90	10mm	IP20	□ Warm White	2700/3000K	900-1000
IP54								□ Nature White	4000-4500K	1000-1100	
IP67								□ Pure White	6000-6500K	1100-1200	
QL-F5050X30SA-P-12/24-OS	SMD5050	CV Version	30	7.2W	12V/24V	≥90	10mm	IP20	□ Warm White	2700/3000K	500-540
IP54								□ Nature White	4000-4500K	540-570	
IP67								□ Pure White	6000-6500K	570-600	
QL-F5050X15SA-W-12/24-OS	SMD5050	CV Version	30	7.2W	12V/24V	≥90	10mm	IP20	□ Warm White	2700/3000K	500-540
IP54								□ Nature White	4000-4500K	540-570	
IP67								□ Pure White	6000-6500K	570-600	
QL-F5050X15SA-N-12/24-OS	SMD5050	CV Version	30	7.2W	12V/24V	≥90	10mm	IP20	□ Warm White	2700/3000K	500-540
IP54								□ Nature White	4000-4500K	540-570	
IP67								□ Pure White	6000-6500K	570-600	
QL-F5050X15SA-P-12/24-OS	SMD5050	CV Version	30	7.2W	12V/24V	≥90	10mm	IP20	□ Warm White	2700/3000K	500-540
IP54								□ Nature White	4000-4500K	540-570	
IP67								□ Pure White	6000-6500K	570-600	

Remark: X stands for waterproof version, A stands for IP20 version, B and S stands for IP54 version, C stands for IP67 version and D stands for IP68 version
 CC means Constant Current version, CV means Constant Voltage version.



Full Spectrum

High Color Rendering CRI95+

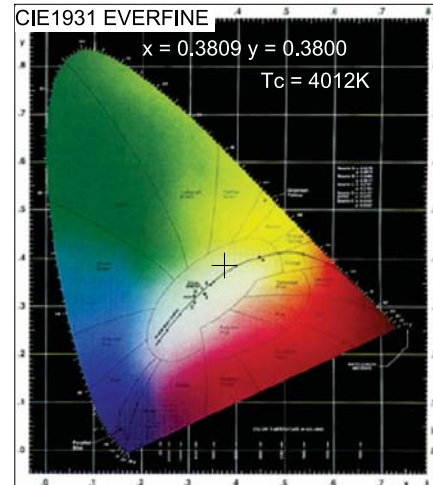
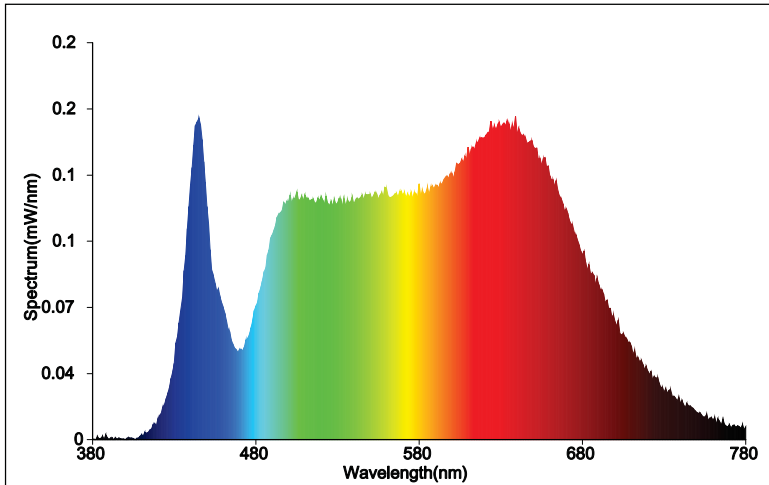
Full Spectrum Light will bring you a True world!





EVERFINE LEDspec Test Report

Test Report of Full Spectrum Strips



Color Parameters:

Chromaticity Coordinate:x=0.3809 y=0.3800/u'=0.2241 v'=0.5031 duv=1.360e-003

Tc=4012K Dominant WL:Ld=578.3nm Purity=28.3%

Ratio:R=20.7% G=74.6% B=4.7% Peak WL:Lp=444.5nm HWL:18.1nm

Render Index:Ra=96.8 CRI=96.4

R1 =97.003 R2 =99.688 R3 =96.307 R4 =93.094 R5 =96.523 R6 =99.007 R7 =96.761

R8 =95.912 R9 =93.741 R10=99.225 R11=89.986 R12=96.106 R13=97.779 R14=97.694 R15=97.814

TM30 Parameters: Rf = 95.8, Rg:102.2

Photo Parameters:

Flux = 9.866 lm Eff. : 111.68 lm/W Fe = 36.16 mW

Electrical parameters:

VF = 2.947 V IF = 29.97 mA P = 88.34 mW

IR = 0 uA (VR = 5.000 V)

LEVEL:New Class WHITE:NK2

Status: T=80.00ms Ip=2795 (4%) [HAAS2000_V3_USB] V2.00.275

Model:3528
 Tester:QL
 Temperature:24Deg
 Manufactory:QL LIGHT
 Assessor:damin
 System:LED300 + HAAS2000_V3_USB

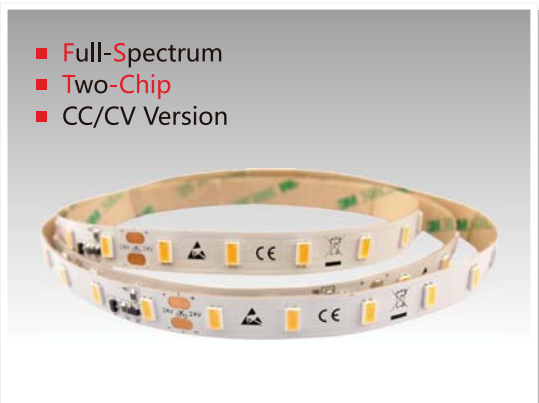
Number:1547
 Date:2018-10-09 09-39
 Humidity:35%
 Remarks:---





Full-Spectrum SMD5630 LED Strips

- Full-Spectrum
- Two-Chip
- CC/CV Version



Features:

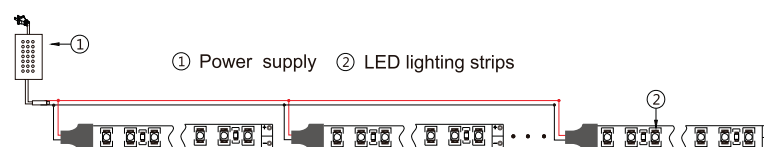
- LED: Full-Spectrum SMD5630 with Two Chips
- Constant Current and Constant Voltage Version
- LED Qty: 126LED/m, 70LED/m, 60LED/m
- Power: 22W/m, 15W/m, 14.4W/m
- Voltage: DC24V and DC12V
- Color: Warm White, Nature White, Pure White
- Waterproof: IP20, IP67
- Cutting: 7LED or 6LED cutting for DC24V version and 3LED for cutting DV12V version



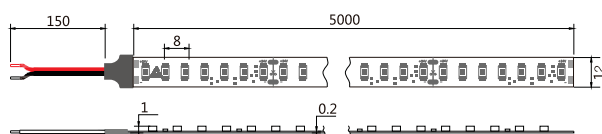
Applications:

- Cove Lighting
- Architectural decorative lighting
- Archway, canopy and bridge Lighting
- Auditorium walkway lighting
- Backlighting for signage letters
- Channel letter lighting

Connections:

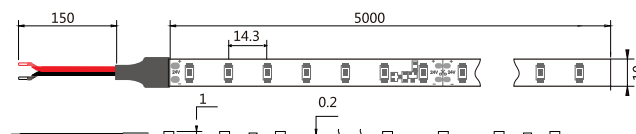


Dimension Drawings:



126LED/m CC Strips

Unit:mm



70LED/m CC Strips

Unit:mm

Model No.	LED Type	CC/CV	LED Qty	Power (W/m)	Voltage	Light Efficiency	CRI(Ra)	PCB Width	Water-proof	Color	(CT:K)	Lumen (lm/m)
QL-F5630X63-W-24C-FS	SMD5630	CC Version	126	22W	24V	100lm/W	Full-Spectrum	12mm	IP20 IP67	□ WarmWhite	2700/3000K	1800-1900
□ NatureWhite										4000-4500K	2000-2100	
□ Pure White										6000-6500K	2100-2200	
QL-F5630X35-W-24C-FS	SMD5630	CC Version	70	15W	24V	100lm/W	Full-Spectrum	10mm	IP20 IP67	□ WarmWhite	2700/3000K	1350-1400
□ NatureWhite										4000-4500K	1450-1500	
□ Pure White										6000-6500K	1500-1600	
QL-F5630X30-W-12C-FS	SMD5630	CC Version	60	14.4W	12V	100lm/W	Full-Spectrum	10mm	IP20 IP67	□ WarmWhite	2700/3000K	1150-1200
□ NatureWhite										4000-4500K	1250-1300	
□ Pure White										6000-6500K	1300-1400	
QL-F5630X30-W-12/24-FS	SMD5630	CV Version	60	14.4W	12V/24V	100lm/W	Full-Spectrum	10mm	IP20 IP67	□ WarmWhite	2700/3000K	1150-1200
□ NatureWhite										4000-4500K	1250-1300	
□ Pure White										6000-6500K	1300-1400	

Remark: X stands for waterproof version, A stands for IP20 non-waterproof version, C stands for IP67 waterproof version.
CC means Constant Current version, CV means Constant Voltage version.



Full-Spectrum SMD2835 LED Flexible Strips



Specifications:

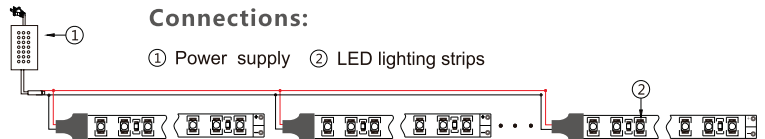
- LED: Full-Spectrum SMD2835 with two chips
- Constant current version and constant voltage version
- LED Quantity: 60LED/m, 120LED/m
- Power: 14.4W/m, 19.2W/m
- Voltage: DC12V, DC24V
- Color: Warm White, Nature White, Pure White
- Waterproof: IP20, IP67
- Cutting: 6LED cutting for DC24V version and 3LED cutting for DC12V version



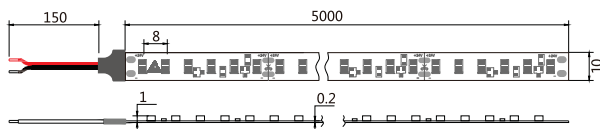
Applications:

- Cove Lighting
- Architectural decorative lighting
- Archway, canopy and bridge edge lighting
- Auditorium walkway lighting
- Backlighting for signage letters
- Channel letter lighting

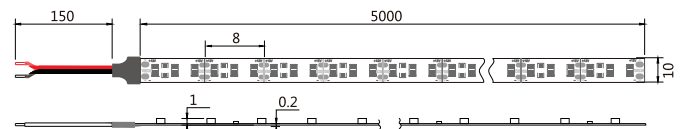
Connections:



Dimension Drawings:



120LED/m CC Strips Unit:mm



120LED/m CV Strips Unit:mm

Model No.	LED Type	CC/CV	LED Qty	Power (W/m)	Voltage	CRI(Ra)	PCB Width	Water-proof	Color	(CT:K)	Lumen (lm/m)
QL-F2835A60-W-24C-FS	SMD2835	CC Version	120	19.2W	24V	Full-Spectrum	10mm	IP20	□ Warm White	2700/3000K	1650-1700
□ Nature White									4000-4500K	1700-1750	
□ Pure White									6000-6500K	1750-1800	
QL-F2835X30-W-24C-FS	SMD2835	CC Version	60	14.4W	24V	Full-Spectrum	10mm	IP20 IP67	□ Warm White	2700/3000K	950-1000
□ Nature White									4000-4500K	1000-1050	
□ Pure White									6000-6500K	1050-1100	
QL-F2835A60-W-12/24-FS	SMD2835	CV Version	120	19.2W	12V/24V	Full-Spectrum	10mm	IP20	□ Warm White	2700/3000K	1650-1700
□ Nature White									4000-4500K	1700-1750	
□ Pure White									6000-6500K	1750-1800	
QL-F2835X30-W-12/24-FS	SMD2835	CV Version	60	14.4W	12V/24V	Full-Spectrum	10mm	IP20 IP67	□ Warm White	2700/3000K	950-1000
□ Nature White									4000-4500K	1000-1050	
□ Pure White									6000-6500K	1050-1100	

Remark: X stands for waterproof version, A stands for non-waterproof version, C stands for IP67 waterproof version.
CC means constant current version, CV means Constant Voltage Version

Full-Spectrum SMD3528 LED Strips

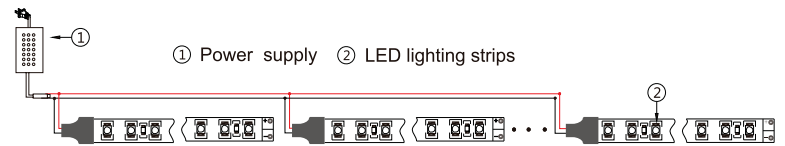


- Full-Spectrum
- CC/CV Version

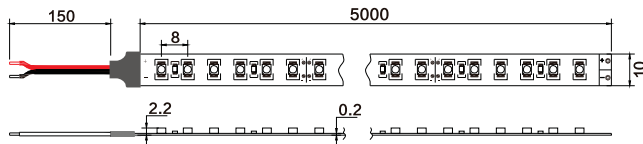
Features:

- LED: Full-Spectrum SMD3528 with Two Chips
- Constant Current and Constant Voltage Version
- LED Qty: 240LED/m, 228LED/m, 180LED/m, 120LED/m, 78LED/m, 60LED/m
- Power: 19.2W/m, 18W/m, 14.4W/m, 9.6W/m, 4.8W/m
- Voltage: DC24V and DC12V
- Color: Warm White, Nature White, Pure White
- Waterproof: IP20/IP54/IP67/IP68
- Cutting: 6LED cutting for DC24V version and 3 LED cutting for DC12V version

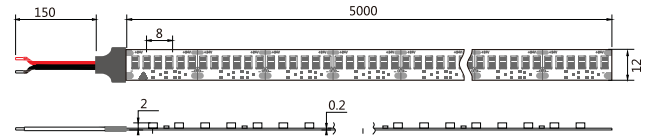
Connections:



Dimension Drawings:



120LED/m CV Strips Unit:mm



228LED/m CC Strips Unit:mm

Model No.	LED Type	CC/CV	LED Qty	Power (W/m)	Voltage	CRI(Ra)	PCB Width	Water-proof	Color	(CT:K)	Lumen (lm/m)
QL-F3528X114-W-24C-FS	SMD3528	CC Version	228	18W	24V	Full-Spectrum	12mm	IP20 IP67	Warm White	2700/3000K	1300-1400
Nature White									4000-4500K	1400-1500	
Pure White									6000-6500K	1500-1500	
QL-F3528X60-W-24C-FS	SMD3528	CC Version	120	9.6W	24V	Full-Spectrum	10mm	IP20-IP68	Warm White	2700/3000K	680-700
Nature White									4000-4500K	740-760	
Pure White									6000-6500K	790-820	
QL-F3528X30-W-24C-FS	SMD3528	CC Version	60	4.8W	24V	Full-Spectrum	10mm	IP20-IP68	Warm White	2700/3000K	330-350
Nature White									4000-4500K	360-380	
Pure White									6000-6500K	390-410	
QL-F3528A120-W-24-S1FS	SMD3528	CV Version	240	19.2W	24V	Full-Spectrum	10mm	IP20 IP67	Warm White	2700/3000K	1600-1700
Nature White									4000-4500K	1700-1800	
Pure White									6000-6500K	1800-1900	
QL-F3528A90-W-24-FS	SMD3528	CV Version	180	14.4W	24V	Full-Spectrum	10mm	IP20 IP67	Warm White	2700/3000K	1000-1100
Nature White									4000-4500K	1100-1200	
Pure White									6000-6500K	1200-1300	
QL-F3528X60-W-12/24-FS	SMD3528	CV Version	120	9.6W	12V/24V	Full-Spectrum	10mm	IP20-IP68	Warm White	2700/3000K	680-700
Nature White									4000-4500K	740-760	
Pure White									6000-6500K	790-820	
QL-F3528X39-W-12/24-FS	SMD3528	CV Version	78	6.3W	12V/24V	Full-Spectrum	8mm	IP20-IP68	Warm White	2700/3000K	440-460
Nature White									4000-4500K	460-490	
Pure White									6000-6500K	490-540	
QL-F3528X30-W-12/24-FS	SMD3528	CV Version	60	4.8W	12V/24V	Full-Spectrum	8mm	IP20-IP68	Warm White	2700/3000K	330-350
Nature White									4000-4500K	360-380	
Pure White									6000-6500K	390-410	

Remark: X stands for waterproof version, A stands for IP20 version, B and S stands for IP54 version, C stands for IP67 version and D stands for IP68 version

CC means Constant Current version, CV means Constant Voltage version.



CRI≥95 SMD5630 LED Strips

EcoDesign

- Ra+95
- CC/CV Version



Features:

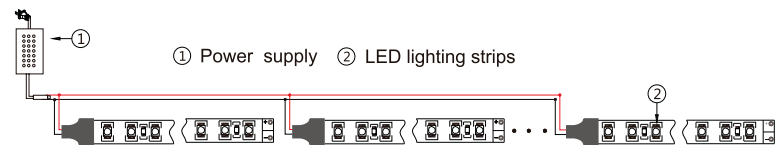
- LED: CRI≥95 SMD5630
- Constant Current and Constant Voltage Version
- LED Qty: 126LED/m, 70LED/m, 60LED/m
- Power: 22W/m, 15W/m, 14.4W/m
- Voltage: DC24V and DC12V
- Color: Warm White, Nature White, Pure White
- Waterproof: IP20, IP67
- Comply with the European ErP EcoDesign regulation.



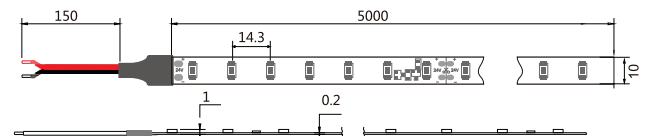
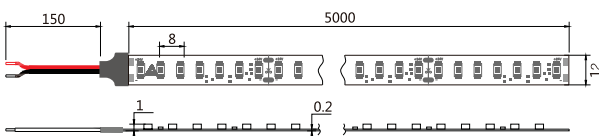
Applications:

- Cove Lighting
- Architectural decorative lighting
- Archway, canopy and bridge Lighting
- Auditorium walkway lighting
- Backlighting for signage letters
- Channel letter lighting

Connections:



Dimension Drawings:



126LED/m CC Strips

Unit:mm

70LED/m CC Strips

Unit:mm

Model No.	LED Type	CC/CV	LED Qty	Power (W/m)	Voltage (DC)	CRI (Ra)	PCB Width	Cutting (mm)	Water proof	Color	(CT:K)	Lumen (lm/m)	Energy efficiency class
QL-F5630X63SA-WW-24C-95	SMD5630	CC Version	126	22W	24V	≥95	12mm	55.55mm 7LED	IP20 IP67	□ Warm White	2700K	1800-1900	F
QL-F5630X63SA-W-24C-95										□ Warm White	3000K	1800-1900	
QL-F5630X63SA-N-24C-95										□ NatureWhite	4000K	2000-2100	
QL-F5630X63SA-P-24C-95										□ Pure White	6000K	2100-2200	
QL-F5630X35SA-WW-24C-95	SMD5630	CC Version	70	15W	24V	≥95	10mm	100mm 7LED	IP20 IP67	□ Warm White	2700K	1350-1400	F
QL-F5630X35SA-W-24C-95										□ Warm White	3000K	1350-1400	
QL-F5630X35SA-N-24C-95										□ NatureWhite	4000K	1450-1500	
QL-F5630X35SA-P-24C-95										□ Pure White	6000K	1500-1550	
QL-F5630X30SA-WW-12C-95	SMD5630	CC Version	60	14.4W	12V	≥95	10mm	50mm 6LED	IP20 IP67	□ Warm White	2700K	1150-1200	/
QL-F5630X30SA-W-12C-95										□ Warm White	3000K	1150-1200	
QL-F5630X30SA-N-12C-95										□ NatureWhite	4000K	1250-1300	
QL-F5630X30SA-P-12C-95										□ Pure White	6000K	1300-1400	
QL-F5630X30SA-WW-24-95	SMD5630	CV Version	60	14.4W	24V	≥95	10mm	100mm 6LED	IP20 IP67	□ Warm White	2700K	1150-1200	/
QL-F5630X30SA-W-24-95										□ Warm White	3000K	1150-1200	
QL-F5630X30SA-W-24-95										□ NatureWhite	4000K	1250-1300	
QL-F5630X30SA-W-24-95										□ Pure White	6000K	1300-1400	

Remark: X stands for waterproof version, A stands for IP20 version, B and S stands for IP54 version, C stands for IP67 version and D stands for IP68 version
CC means Constant Current version, CV means Constant Voltage version.

CRI ≥ 90 SMD5630 LED Strips

EcoDesign



- Ra+90
- CC/CV Version

Features:

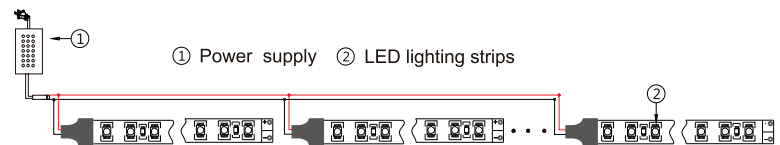
- LED: CRI ≥ 90 SMD5630
- Constant Current Version, Constant Voltage Version
- LED Qty: 126LED/m, 70LED/m, 60LED/m
- Power: 22W/m, 15W/m, 14.4W/m
- Voltage: DC24V
- Color: Warm White, Nature White, Pure White
- Waterproof: IP20, IP67
- Comply with the European ErP EcoDesign regulation.



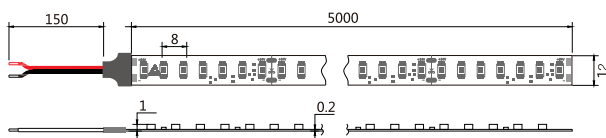
Applications:

- Cove Lighting
- Architectural decorative lighting
- Archway, canopy and bridge Lighting
- Auditorium walkway lighting
- Backlighting for signage letters
- Channel letter lighting

Connections:

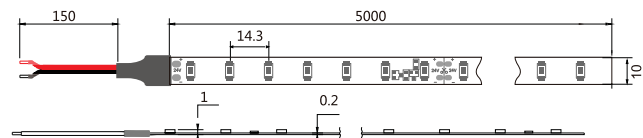


Dimension Drawings:



126LED/m CC Strips

Unit:mm



70LED/m CC Strips

Unit:mm

Model No.	LED Type	CC/CV	LED Qty	Power (W/m)	Voltage (DC)	CRI (Ra)	PCB Width	Cutting (mm)	Water proof	Color	(CT:K)	Lumen (lm/m)	Energy efficiency class
QL-F5630X63SA-WW-24C	SMD5630	CC Version	126	22W	24V	≥90	12mm	55.55mm 7LED	IP20 IP67	□ Warm White	2700K	1800-1900	F
QL-F5630X63SA-W-24C										□ Warm White	3000K	1800-1900	
QL-F5630X63SA-N-24C										□ NatureWhite	4000K	2000-2100	
QL-F5630X63SA-P-24C										□ Pure White	6000K	2100-2200	
QL-F5630X35SA-WW-24C	SMD5630	CC Version	70	15W	24V	≥90	10mm	100mm 7LED	IP20 IP67	□ Warm White	2700K	1350-1400	F
QL-F5630X35SA-W-24C										□ Warm White	3000K	1350-1400	
QL-F5630X35SA-N-24C										□ NatureWhite	4000K	1450-1500	
QL-F5630X35SA-P-24C										□ Pure White	6000K	1500-1550	
QL-F5630X30SA-WW-12C	SMD5630	CC Version	60	14.4W	12V	≥90	10mm	50mm 6LED	IP20 IP67	□ Warm White	2700K	1150-1200	/
QL-F5630X30SA-W-12C										□ Warm White	3000K	1150-1200	
QL-F5630X30SA-N-12C										□ NatureWhite	4000K	1250-1300	
QL-F5630X30SA-P-12C										□ Pure White	6000K	1300-1400	
QL-F5630X30SA-WW-24	SMD5630	CV Version	60	14.4W	24V	≥90	10mm	100mm 6LED	IP20 IP67	□ Warm White	2700K	1150-1200	/
QL-F5630X30SA-W-24										□ Warm White	3000K	1150-1200	
QL-F5630X30SA-W-24										□ NatureWhite	4000K	1250-1300	
QL-F5630X30SA-W-24										□ Pure White	6000K	1300-1400	



CRI ≥ 95 SMD2835 LED Strips

EcoDesign

- Ra+95
- CC/CV Version



Features:

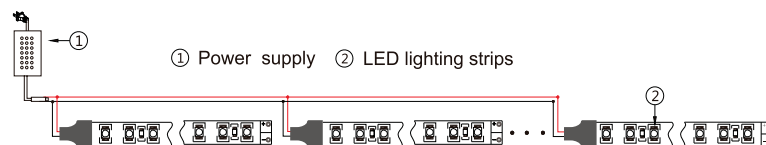
- LED: CRI ≥ 95 SMD2835
- Constant Current Version and constant voltage version
- LED Qty: 70LED/m, 126LED/m, 140LED/m, 182LED/m, 238LED/m
- Power: 9.6W/m, 17W/m, 18.5W/m, 19.2W/m, 24W/m,
- Voltage: DC24V
- Color: Warm White, Nature White, Pure White
- Waterproof: IP20, IP67
- Comply with the European ErP EcoDesign regulation.



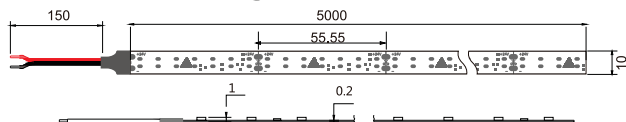
Applications:

- Cove Lighting
- Architectural decorative lighting
- Archway, canopy and bridge Lighting
- Auditorium walkway lighting
- Backlighting for signage letters
- Channel letter lighting

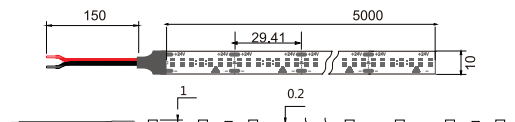
Connections:



Dimension Drawings:



126LED/m Version Unit:mm



238LED/m Version Unit:mm

Model No.	LED Type	CC/CV	LED Qty	Power (W/m)	Voltage (DC)	CRI (Ra)	PCB Width	Cutting (mm)	Water proof	Color	(CT:K)	Lumen (lm/m)	Energy efficiency class
QL-F2835X35SA-WW-24-95	SMD2835	CV Version	70	9.6W	24V	≥95	8mm	100mm 7LED	IP20 IP67	☐ Warm White	2700K	960-1010	F
QL-F2835X35SA-W-24-95										☐ Warm White	3000K	1010-1080	
QL-F2835X35SA-N-24-95										☐ NatureWhite	4000K	1080-1150	
QL-F2835X35SA-P-24-95										☐ Pure White	6000K	1080-1150	
QL-F2835X70SA-W-24-95	SMD2835	CV Version	140	19.2W	24V	≥95	8mm	50mm 7LED	IP20 IP67	☐ Warm White	2700K	2000-2100	F
QL-F2835X70SA-WW-24-95										☐ Warm White	3000K	2100-2200	
QL-F2835X70SA-N-24-95										☐ NatureWhite	4000K	2200-2300	
QL-F2835X70SA-P-24-95										☐ Pure White	6000K	2200-2300	
QL-F2835X91SA-WW-24-95	SMD2835	CV Version	182	18.5W	24V	≥95	10mm	38.46mm 7LED	IP20 IP67	☐ Warm White	2700K	1950-2050	F
QL-F2835X91SA-W-24-95										☐ Warm White	3000K	2050-2150	
QL-F2835X91SA-N-24-95										☐ NatureWhite	4000K	2150-2250	
QL-F2835X91SA-P-24-95										☐ Pure White	6000K	2150-2250	
QL-F2835X119SA-WW-24-95	SMD2835	CV Version	238	24W	24V	≥95	10mm	29.41mm 7LED	IP20 IP67	☐ Warm White	2700K	2650-2750	F
QL-F2835X119SA-W-24-95										☐ Warm White	3000K	2750-2850	
QL-F2835X119SA-N-24-95										☐ NatureWhite	4000K	2850-2950	
QL-F2835X119SA-P-24-95										☐ Pure White	6000K	2850-2950	
QL-F2835X63SA-WW-24-95C	SMD2835	CC Version	126	17W	24V	≥95	10mm	55.55mm 7LED	IP20 IP67	☐ Warm White	2700K	1750-1850	F
QL-F2835X63SA-W-24-95C										☐ Warm White	3000K	1850-1950	
QL-F2835X63SA-N-24-95C										☐ NatureWhite	4000K	1950-2050	
QL-F2835X63SA-P-24-95C										☐ Pure White	6000K	1950-2050	

CRI ≥ 90 SMD2835 LED Strips

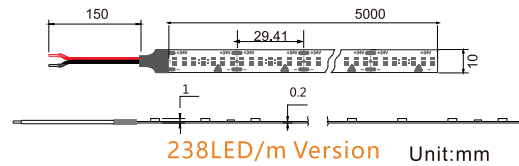
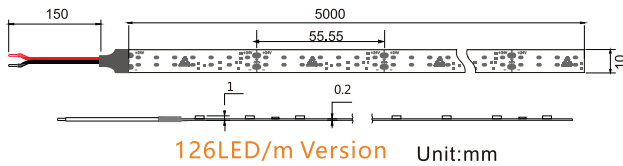
EcoDesign



Features:

- LED: CRI ≥ 90 SMD2835
- Constant Current Version and constant voltage version
- LED Qty: 70LED/m, 126LED/m, 128LED/m, 140LED/m, 182LED/m, 238LED/m, 240LED/m, 256LED/m
- Power: 7.5W/m, 9.6W/m, 9.2W/m, 14W/m, 15W/m, 17W/m, 18.5W/m, 19.2W/m, 24W/m
- Voltage: DC24V
- Color: Warm White, Nature White, Pure White
- Waterproof: IP20, IP67
- Comply with the European ErP EcoDesign regulation.

Dimension Drawings:



Model No.	LED Type	CC/CV	LED Qty	Power (W/m)	Voltage (DC)	CRI (Ra)	PCB Width	Cutting (mm)	Water proof	Color	(CT:K)	Lumen (lm/m)	Energy efficiency class
QL-F2835X35SA-WW-24	SMD2835	CV Version	70	9.6W	24V	≥90	8mm	100mm 7LED	IP20 IP67	□ Warm White	2700K	1000-1050	E/F
QL-F2835X35SA-W-24										□ Warm White	3000K	1050-1100	
QL-F2835X35SA-N-24										□ NatureWhite	4000K	1100-1150	
QL-F2835X35SA-P-24										□ Pure White	6500K	1100-1150	
QL-F2835X70SA-WW-24	SMD2835	CV Version	140	19.2W	24V	≥90	8mm	50mm 7LED	IP20 IP67	□ Warm White	2700K	2000-2100	E/F
QL-F2835X70SA-W-24										□ Warm White	3000K	2100-2200	
QL-F2835X70SA-N-24										□ NatureWhite	4000K	2200-2300	
QL-F2835X70SA-P-24										□ Pure White	6500K	2200-2300	
QL-F2835X91SA-WW-24	SMD2835	CV Version	182	18.5W	24V	≥90	10mm	38.46mm 7LED	IP20 IP67	□ Warm White	2700K	1950-2050	E/F
QL-F2835X91SA-W-24										□ Warm White	3000K	2050-2150	
QL-F2835X91SA-N-24										□ NatureWhite	4000K	2150-2250	
QL-F2835X91SA-P-24										□ Pure White	6500K	2150-2250	
QL-F2835X119SA-WW-24	SMD2835	CV Version	238	24W	24V	≥90	10mm	29.41mm 7LED	IP20 IP67	□ Warm White	2700K	2600-2750	E/F
QL-F2835X119SA-W-24										□ Warm White	3000K	2700-2850	
QL-F2835X119SA-N-24										□ NatureWhite	4000K	2800-2950	
QL-F2835X119SA-P-24										□ Pure White	6500K	2800-2950	
QL-F2835X64SA-WW-24	SMD2835	CV Version	128	7.5W	24V	≥90	10mm	62.5mm 8LED	IP20 IP67	□ Warm White	2700K	1000-1050	D/E
QL-F2835X64SA-W-24										□ Warm White	3000K	1050-1100	
QL-F2835X64SA-N-24										□ NatureWhite	4000K	1100-1150	
QL-F2835X64SA-P-24										□ Pure White	6500K	1100-1150	
QL-F2835X120SA-WW-24	SMD2835	CV Version	240	14W	24V	≥90	10mm	33.33mm 8LED	IP20 IP67	□ Warm White	2700K	1800-1900	D/E
QL-F2835X120SA-W-24										□ Warm White	3000K	1900-2000	
QL-F2835X120SA-N-24										□ NatureWhite	4000K	2000-2100	
QL-F2835X120SA-P-24										□ Pure White	6500K	2000-2100	
QL-F2835A128SA-W-24	SMD2835	CV Version	256	15W	24V	≥90	20mm Double Row	62.5mm 16LED	IP20	□ Warm White	2700K	2000-2100	D/E
QL-F2835A128SA-W-24										□ Warm White	3000K	2100-2200	
QL-F2835A128SA-N-24										□ NatureWhite	4000K	2200-2300	
QL-F2835A128SA-P-24										□ Pure White	6500K	2200-2300	
QL-F2835X63SA-WW-24C	SMD2835	CC Version	126	17W	24V	≥90	10mm	55.55mm 7LED	IP20 IP67	□ Warm White	2700K	1750-1850	E/F
QL-F2835X63SA-W-24C										□ Warm White	3000K	1850-1950	
QL-F2835X63SA-N-24C										□ NatureWhite	4000K	1950-2050	
QL-F2835X63SA-P-24C										□ Pure White	6500K	1950-2050	

Remark: X stands for waterproof version, A stands for IP20 version, B and S stands for IP54 version, C stands for IP67 version and D stands for IP68 version
CC means Constant Current version, CV means Constant Voltage version.



CRI ≥ 90 Economic SMD2835 LED Strips

- Ra+90
- CC/CV Version



Features:

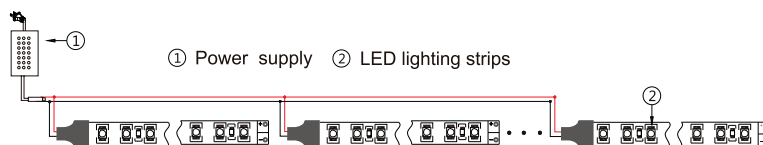
- LED: CRI ≥ 90 SMD2835
- Constant Current Version and constant voltage version
- LED Qty: 70LED/m, 126LED/m, 140LED/m, 182LED/m, 238LED/m
- Power: 4.5W/m, 8.5W/m, 9.2W/m, 14W/m, 19W/m
- Voltage: DC24V
- Color: Warm White, Nature White, Pure White
- Waterproof: IP20, IP67
- Comply with the European ErP EcoDesign regulation.



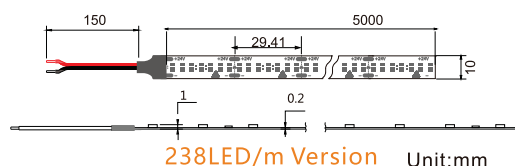
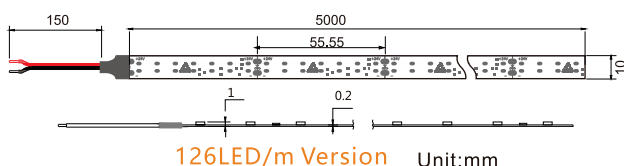
Applications:

- Cove Lighting
- Architectural decorative lighting
- Archway, canopy and bridge Lighting
- Auditorium walkway lighting
- Backlighting for signage letters
- Channel letter lighting

Connections:



Dimension Drawings:



Model No.	LED Type	CC/CV	LED Qty	Power (W/m)	Voltage (DC)	CRI (Ra)	PCB Width	Cutting (mm)	Water proof	Color	(CT:K)	Lumen (lm/m)	Energy efficiency class
QL-F2835A63SA-W-24-CES	SMD2835	CV Version	126	8.5W	24V	≥90	5mm	55.5mm 7LED	IP20	□ Warm White	2700/3000K	900-950	F
QL-F2835A63SA-N-24-CES										□ NatureWhite	3500/4000K	950-1000	
QL-F2835A63SA-P-24-CES										□ Pure White	5000/6500K	1000-1050	
QL-F2835X35SA-W-24-CES	SMD2835	CV Version	70	4.5W	24V	≥90	8mm	100mm 7LED	IP20 IP67	□ Warm White	2700/3000K	500-525	F
QL-F2835X35SA-N-24-CES										□ NatureWhite	3500/4000K	525-550	
QL-F2835X35SA-P-24-CES										□ Pure White	5000/6500K	550-575	
QL-F2835X70SA-W-24-CES	SMD2835	CV Version	140	9.2W	24V	≥90	8mm	50mm 7LED	IP20 IP67	□ Warm White	2700/3000K	1000-1050	F
QL-F2835X70SA-N-24-CES										□ NatureWhite	3500/4000K	1050-1100	
QL-F2835X70SA-P-24-CES										□ Pure White	5000/6500K	1100-1050	
QL-F2835X91SA-W-24-CES	SMD2835	CV Version	182	14W	24V	≥90	10mm	38.46mm 7LED	IP20 IP67	□ Warm White	2700/3000K	1520-1590	F
QL-F2835X91SA-N-24-CES										□ NatureWhite	3500/4000K	1590-1570	
QL-F2835X91SA-P-24-CES										□ Pure White	5000/6500K	1660-1730	
QL-F2835X119SA-W-24-CES	SMD2835	CV Version	238	19W	24V	≥90	10mm	29.41mm 7LED	IP20 IP67	□ Warm White	2700/3000K	2000-2100	F
QL-F2835X119SA-N-24-CES										□ NatureWhite	3500/4000K	2100-2200	
QL-F2835X119SA-P-24-CES										□ Pure White	5000/6500K	2200-2300	
QL-F2835X63SA-W-24C-CES	SMD2835	CC Version	126	8.5W	24V	≥90	10mm	55.55mm 7LED	IP20 IP67	□ Warm White	2700/3000K	900-950	F
QL-F2835X63SA-N-24C-CES										□ NatureWhite	3500/4000K	950-1000	
QL-F2835X63SA-P-24C-CES										□ Pure White	5000/6500K	1000-1050	

CRI ≥ 95 SMD3528 LED Strips

EcoDesign



Features:

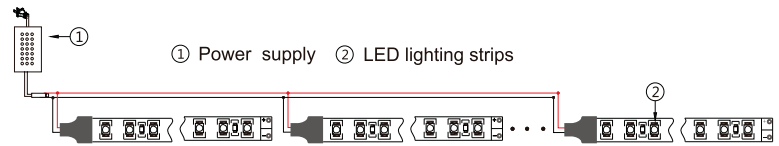
- LED: CRI ≥ 95 SMD3528
- Constant Current Version and constant voltage version
- LED Qty: 70LED/m, 126LED/m, 140LED/m, 182LED/m, 238LED/m
- Power: 7W/m, 8.5W/m, 12.5W/m, 14W/m, 18W/m, 24W/m
- Voltage: DC24V
- Color: Warm White, Nature White, Pure White
- Waterproof: IP20, IP67
- Comply with the European ErP EcoDesign regulation.



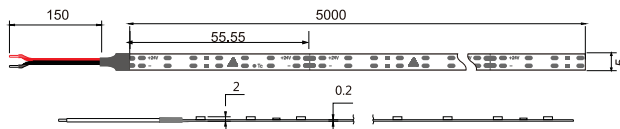
Applications:

- Cove Lighting
- Architectural decorative lighting
- Archway, canopy and bridge Lighting
- Auditorium walkway lighting
- Backlighting for signage letters
- Channel letter lighting

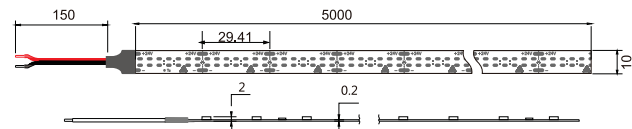
Connections:



Dimension Drawings:



126LED/m Version Unit:mm



238LED/m Version Unit:mm

Model No.	LED Type	CC/CV	LED Qty	Power (W/m)	Voltage (DC)	CRI (Ra)	PCB Width	Cutting (mm)	Water proof	Color	(CT:K)	Lumen (lm/m)	Energy efficiency class	
QL-F3528A63SA-W-24-595	SMD3528	CV Version	126	8.5W	24V	≥95	5mm	55.5mm 7LED	IP20	<input type="checkbox"/> Warm White	2700/3000K	830-870	F	
<input type="checkbox"/> NatureWhite										4000K				870-910
<input type="checkbox"/> Pure White														
QL-F3528X35SA-W-24-95	SMD3528	CV Version	70	7W	24V	≥95	8mm	100mm 7LED	IP20 IP67 IP68	<input type="checkbox"/> Warm White	2700/3000K	690-710	F	
<input type="checkbox"/> NatureWhite										4000K				710-740
<input type="checkbox"/> Pure White														
QL-F3528X70SA-W-24-95	SMD3528	CV Version	140	14W	24V	≥95	8mm	50mm 7LED	IP20 IP67 IP68	<input type="checkbox"/> Warm White	2700/3000K	1420-1470	F	
<input type="checkbox"/> NatureWhite										4000K				1470-1490
<input type="checkbox"/> Pure White														
QL-F3528X91SA-W-24-95	SMD3528	CV Version	182	18W	24V	≥95	10mm	38.46mm 7LED	IP20 IP54 IP67 IP68	<input type="checkbox"/> Warm White	2700/3000K	1780-1860	F	
<input type="checkbox"/> NatureWhite										4000K				1860-1920
<input type="checkbox"/> Pure White														
QL-F3528X119SA-W-24-95	SMD3528	CV Version	238	24W	24V	≥95	10mm	29.41mm 7LED	IP20 IP54 IP67 IP68	<input type="checkbox"/> Warm White	2700/3000K	2480-2560	F	
<input type="checkbox"/> NatureWhite										4000K				2560-2640
<input type="checkbox"/> Pure White														
QL-F3528X63SA-X-24C-95	SMD3528	CC Version	126	12.5W	24V	≥95	10mm	55.55mm 7LED	IP20 IP54 IP67 IP68	<input type="checkbox"/> Warm White	2700/3000K	1230-1250	F	
<input type="checkbox"/> NatureWhite										4000K				1280-1330
<input type="checkbox"/> Pure White														



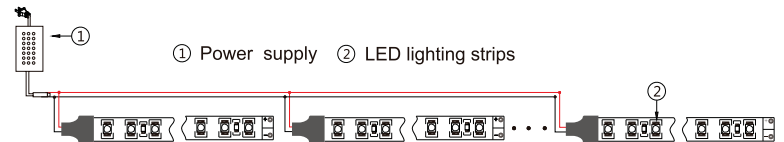
CRI≥95 SMD3528 LED Strips



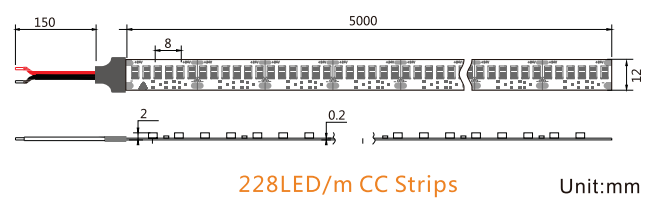
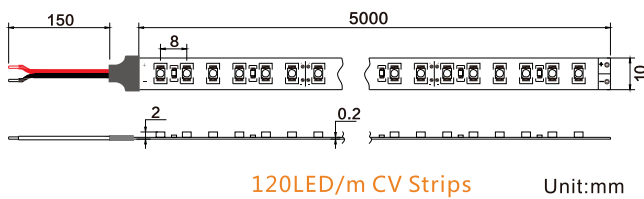
Features:

- LED: CRI≥95 SMD3528
- Constant Current and Constant Voltage Version
- LED Qty: 240LED/m, 228LED/m, 180LED/m, 120LED/m, 78LED/m, 60LED/m
- Power: 19.2W/m, 18W/m, 14.4W/m, 9.4W/m, 7.2W/m
- Voltage: DC24V and DC12V
- Color: Warm White, Nature White, Pure White
- Waterproof: IP20/IP54/IP67/IP68
- Cutting: 6LED cutting for DC24V version and 3 LED cutting for DC12V version

Connections:



Dimension Drawings:



Model No.	LED Type	CC/CV	LED Qty	Power (W/m)	Voltage	CRI(Ra)	PCB Width	Water-proof	Color	(CT:K)	Lumen (lm/m)
QL-F3528X114SA-W-24C-95	SMD3528	CC Version	228	18W	24V	≥95	12mm	IP20	□ Warm White	2700/3000K	1400-1500
□ Nature White									4000-4500K	1500-1600	
□ Pure White									6000-6500K	1600-1700	
QL-F3528X60SA-W-24C-95	SMD3528	CC Version	120	14.4W	24V	≥95	10mm	IP20-IP68	□ Warm White	2700/3000K	1000-1100
□ Nature White									4000-4500K	1100-1200	
□ Pure White									6000-6500K	1200-1300	
QL-F3528X30SA-W-24C-95	SMD3528	CC Version	60	7.2W	24V	≥95	10mm	IP20-IP68	□ Warm White	2700/3000K	500-550
□ Nature White									4000-4500K	550-600	
□ Pure White									6000-6500K	600-660	
QL-F3528A120SAL-W-24-S195	SMD3528	CV Version	240	19.2W	24V	≥95	10mm	IP20	□ Warm White	2700/3000K	1600-1700
□ Nature White									4000-4500K	1700-1800	
□ Pure White									6000-6500K	1800-1900	
QL-F3528A90SAL-W-24-95	SMD3528	CV Version	180	14.4W	24V	≥95	10mm	IP20	□ Warm White	2700/3000K	1000-1100
□ Nature White									4000-4500K	1100-1200	
□ Pure White									6000-6500K	1200-1300	
QL-F3528X60SA-W-12/24-95	SMD3528	CV Version	120	14.4W	12V/24V	≥95	10mm	IP20-IP68	□ Warm White	2700/3000K	1000-1100
□ Nature White									4000-4500K	1100-1200	
□ Pure White									6000-6500K	1200-1300	
QL-F3528X39SA-W-12/24-95	SMD3528	CV Version	78	9.4W	12V/24V	≥95	8mm	IP20-IP68	□ Warm White	2700/3000K	750-800
□ Nature White									4000-4500K	800-850	
□ Pure White									6000-6500K	850-880	
QL-F3528X30SA-W-12/24-95	SMD3528	CV Version	60	7.2W	12V/24V	≥95	8mm	IP20-IP68	□ Warm White	2700/3000K	500-550
□ Nature White									4000-4500K	550-600	
□ Pure White									6000-6500K	600-660	

Remark: X stands for waterproof version, A stands for IP20 version, B and S stands for IP54 version, C stands for IP67 version and D stands for IP68 version

CC means Constant Current version, CV means Constant Voltage version.



CRI ≥ 90 SMD3528 LED Strips

EcoDesign



- Ra+90
- CC/CV Version

Features:

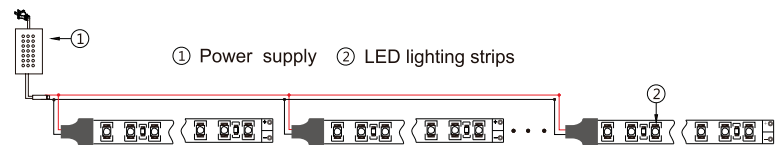
- LED: CRI ≥ 90 SMD3528
- Constant Current Version and constant voltage version
- LED Qty: 70LED/m, 126LED/m, 140LED/m, 182LED/m, 238LED/m
- Power: 7W/m, 8.5W/m, 12.5W/m, 14W/m, 18W/m, 24W/m
- Voltage: DC24V
- Color: Warm White, Nature White, Pure White
- Waterproof: IP20, IP67
- Comply with the European ErP EcoDesign regulation.



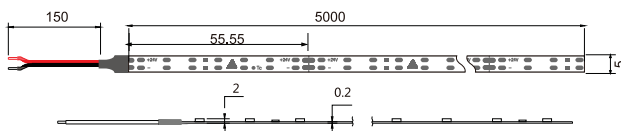
Applications:

- Cove Lighting
- Architectural decorative lighting
- Archway, canopy and bridge Lighting
- Auditorium walkway lighting
- Backlighting for signage letters
- Channel letter lighting

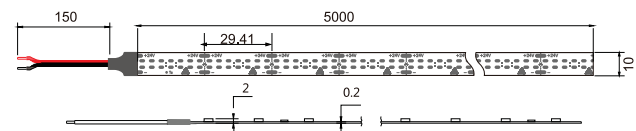
Connections:



Dimension Drawings:



126LED/m Version Unit:mm



238LED/m Version Unit:mm

Model No.	LED Type	CC/CV	LED Qty	Power (W/m)	Voltage (DC)	CRI (Ra)	PCB Width	Cutting (mm)	Water proof	Color	(CT:K)	Lumen (lm/m)	Energy efficiency class
QL-F3528A63SA-W-24-5	SMD3528	CV Version	126	8.5W	24V	≥90	5mm	55.5mm 7LED	IP20	<input type="checkbox"/> Warm White	2700/3000K	900-950	E/F
<input type="checkbox"/> NatureWhite										3500/4000K	950-1000		
<input type="checkbox"/> Pure White										5000/6000K	1000-1050		
QL-F3528X35SA-W-24	SMD3528	CV Version	70	7W	24V	≥90	8mm	100mm 7LED	IP20 IP67 IP68	<input type="checkbox"/> Warm White	2700/3000K	720-770	E/F
<input type="checkbox"/> NatureWhite										3500/4000K	770-820		
<input type="checkbox"/> Pure White										5000/6000K	820-870		
QL-F3528X70SA-W-24	SMD3528	CV Version	140	14W	24V	≥90	8mm	50mm 7LED	IP20 IP67 IP68	<input type="checkbox"/> Warm White	2700/3000K	1600-1650	E/F
<input type="checkbox"/> NatureWhite										3500/4000K	1650-1700		
<input type="checkbox"/> Pure White										5000/6000K	1700-1750		
QL-F3528X91SA-W-24	SMD3528	CV Version	182	18W	24V	≥90	10mm	38.46mm 7LED	IP20 IP54 IP67 IP68	<input type="checkbox"/> Warm White	2700/3000K	1970-2070	E/F
<input type="checkbox"/> NatureWhite										3500/4000K	2070-2170		
<input type="checkbox"/> Pure White										5000/6000K	2170-2270		
QL-F3528X119SA-W-24	SMD3528	CV Version	238	24W	24V	≥90	10mm	29.41mm 7LED	IP20 IP54 IP67 IP68	<input type="checkbox"/> Warm White	2700/3000K	2550-2700	E/F
<input type="checkbox"/> NatureWhite										3500/4000K	2700-2850		
<input type="checkbox"/> Pure White										5000/6000K	2850-3000		
QL-F3528X63SA-X-24C	SMD3528	CC Version	126	12.5W	24V	≥90	10mm	55.55mm 7LED	IP20 IP54 IP67 IP68	<input type="checkbox"/> Warm White	2700/3000K	1360-1430	E/F
<input type="checkbox"/> NatureWhite										3500/4000K	1430-1500		
<input type="checkbox"/> Pure White										5000/6000K	1500-1570		



CRI ≥ 90 Economic SMD3528 LED Strips

EcoDesign

- Ra+90
- CC/CV Version



Features:

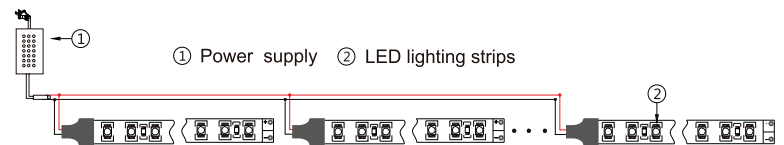
- LED: CRI ≥ 90 SMD3528
- Constant Current Version and constant voltage version
- LED Qty: 70LED/m, 126LED/m, 140LED/m, 182LED/m, 238LED/m
- Power: 4.5W/m, 8.5W/m, 9.2W/m, 12W/m, 16W/m
- Voltage: DC24V
- Color: Warm White, Nature White, Pure White
- Waterproof: IP20, IP67
- Comply with the European ErP EcoDesign regulation.



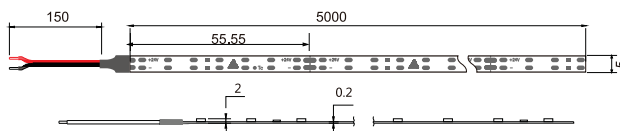
Applications:

- Cove Lighting
- Architectural decorative lighting
- Archway, canopy and bridge Lighting
- Auditorium walkway lighting
- Backlighting for signage letters
- Channel letter lighting

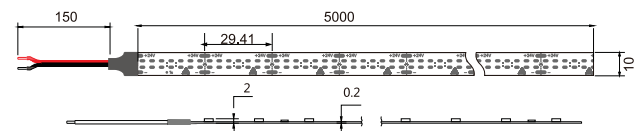
Connections:



Dimension Drawings:



126LED/m Version Unit:mm



238LED/m Version Unit:mm

Model No.	LED Type	CC/CV	LED Qty	Power (W/m)	Voltage (DC)	CRI (Ra)	PCB Width	Cutting (mm)	Water proof	Color	(CT:K)	Lumen (lm/m)	Energy efficiency class
QL-F3528A63SA-W-24-CES	SMD3528	CV Version	126	8.5W	24V	≥90	5mm	55.5mm 7LED	IP20	□ Warm White	2700/3000K	860-890	F
QL-F3528A63SA-N-24-CES										□ NatureWhite	3500/4000K	890-920	
QL-F3528A63SA-P-24-CES										□ Pure White	5000/6000K	920-950	
QL-F3528X35SA-W-24-CES	SMD3528	CV Version	70	4.5W	24V	≥90	8mm	100mm 7LED	IP20 IP67 IP68	□ Warm White	2700/3000K	460-480	F
QL-F3528X35SA-N-24-CES										□ NatureWhite	3500/4000K	480-500	
QL-F3528X35SA-P-24-CES										□ Pure White	5000/6000K	500-520	
QL-F3528X70SA-W-24-CES	SMD3528	CV Version	140	9.2W	24V	≥90	8mm	50mm 7LED	IP20 IP67 IP68	□ Warm White	2700/3000K	900-950	F
QL-F3528X70SA-N-24-CES										□ NatureWhite	3500/4000K	950-1000	
QL-F3528X70SA-P-24-CES										□ Pure White	5000/6000K	1000-1050	
QL-F3528X91SA-W-24-CES	SMD3528	CV Version	182	12W	24V	≥90	10mm	38.46mm 7LED	IP20 IP54 IP67 IP68	□ Warm White	2700/3000K	1200-1250	F
QL-F3528X91SA-N-24-CES										□ NatureWhite	3500/4000K	1250-1300	
QL-F3528X91SA-P-24-CES										□ Pure White	5000/6000K	1300-1350	
QL-F3528X119SA-W-24-CES	SMD3528	CV Version	238	16W	24V	≥90	10mm	29.41mm 7LED	IP20 IP54 IP67 IP68	□ Warm White	2700/3000K	1600-1660	F
QL-F3528X119SA-N-24-CES										□ NatureWhite	3500/4000K	1660-1720	
QL-F3528X119SA-P-24-CES										□ Pure White	5000/6000K	1720-1780	
QL-F3528X63SA-X-24C-CES	SMD3528	CC Version	126	8.5W	24V	≥90	10mm	55.55mm 7LED	IP20 IP54 IP67 IP68	□ Warm White	2700/3000K	860-890	F
QL-F3528X63SA-X-24C-CES										□ NatureWhite	3500/4000K	890-920	
QL-F3528X63SA-X-24C-CES										□ Pure White	5000/6000K	920-950	

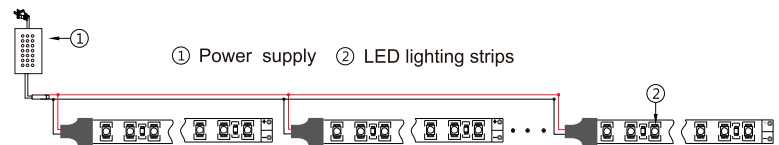
CRI \geq 90 SMD3528 LED Strips



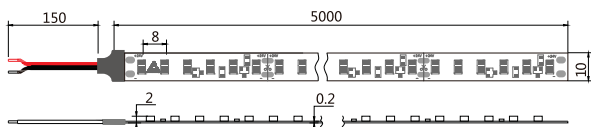
Features:

- LED: CRI \geq 90 SMD3528
- Constant Current and Constant Voltage Version
- LED Qty: 240LED/m, 228LED/m, 180LED/m, 120LED/m, 78LED/m, 60LED/m
- Power: 19.2W/m, 18W/m, 14.4W/m, 9.4W/m, 7.2W/m
- Voltage: DC24V and DC12V
- Color: Warm White, Nature White, Pure White
- Waterproof: IP20/IP54/IP67/IP68
- Cutting: 6LED cutting for DC24V version and 3 LED cutting for DC12V version

Connections:

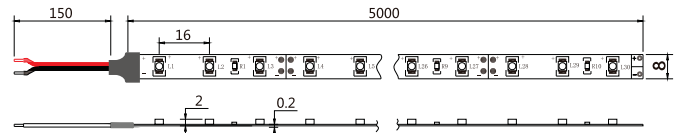


Dimension Drawings:



120LED/m CC Strips

Unit:mm



60LED/m CV Strips

Unit:mm

Model No.	LED Type	CC/CV	LED Qty	Power (W/m)	Voltage	CRI(Ra)	PCB Width	Water-proof	Color	(CT:K)	Lumen (lm/m)
QL-F3528X114SA-W-24C	SMD3528	CC Version	228	18W	24V	\geq 90	12mm	IP20	□ Warm White	2700/3000/3500K	1500-1600
□ Nature White									4000-4500K	1600-1700	
□ Pure White									5000/6000K	1700-1800	
QL-F3528X60SA-W-24C	SMD3528	CC Version	120	14.4W	24V	\geq 90	10mm	IP20-IP68	□ Warm White	2700/3000/3500K	1100-1200
□ Nature White									4000-4500K	1200-1300	
□ Pure White									5000/6000K	1300-1400	
QL-F3528X30SA-W-24C	SMD3528	CC Version	60	7.2W	24V	\geq 90	10mm	IP20-IP68	□ Warm White	2700/3000/3500K	550-600
□ Nature White									4000-4500K	600-650	
□ Pure White									5000/6000K	650-700	
QL-F3528A120SAL-W-24-S1	SMD3528	CV Version	240	19.2W	24V	\geq 90	10mm	IP20	□ Warm White	2700/3000/3500K	1700-1800
□ Nature White									4000-4500K	1600-1700	
□ Pure White									5000/6000K	1900-2000	
QL-F3528A90SAL-W-24	SMD3528	CV Version	180	14.4W	24V	\geq 90	10mm	IP20	□ Warm White	2700/3000/3500K	1100-1200
□ Nature White									4000-4500K	1200-1300	
□ Pure White									5000/6000K	1300-1400	
QL-F3528X60SA-W-12/24	SMD3528	CV Version	120	14.4W	12V/24V	\geq 90	10mm	IP20-IP68	□ Warm White	2700/3000/3500K	1100-1200
□ Nature White									4000-4500K	1200-1300	
□ Pure White									5000/6000K	1300-1400	
QL-F3528X39SA-W-12/24	SMD3528	CV Version	78	9.4W	12V/24V	\geq 90	8mm	IP20-IP68	□ Warm White	2700/3000/3500K	800-850
□ Nature White									4000-4500K	850-880	
□ Pure White									5000/6000K	880-900	
QL-F3528X30SA-W-12/24	SMD3528	CV Version	60	7.2W	12V/24V	\geq 90	8mm	IP20-IP68	□ Warm White	2700/3000/3500K	550-600
□ Nature White									4000-4500K	600-650	
□ Pure White									5000/6000K	650-700	

Remark: X stands for waterproof version, A stands for IP20 version, B and S stands for IP54 version, C stands for IP67 version and D stands for IP68 version
CC means Constant Current version, CV means Constant Voltage version.



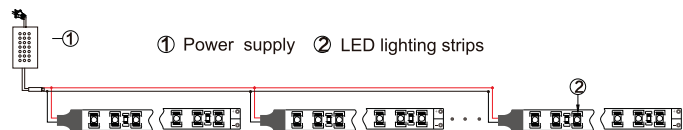
SMD3528 LED Flexible Strips



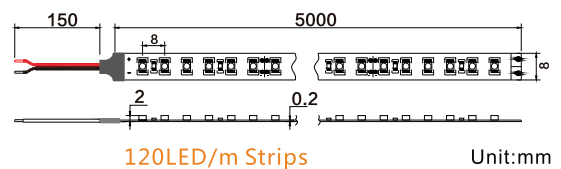
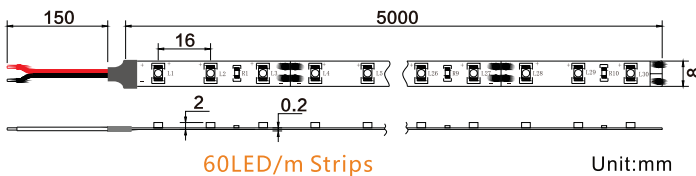
Features:

- LED: SMD3528
- LED Quantity: 60LED/m and 120LED/m
- Power: 4.8W/m and 9.6W/m
- Voltage: DC12V/DC24V
- PCB Width: 8mm, 10mm
- Color: Red, Blue, Green, Yellow, Warm White, Nature White, Pure White
- Waterproof: IP20/IP54/IP67/IP68
- Cutting: 3 LED cuttable for DC12V version and 6 LED cuttable for DC24V version

Connections:



Dimension Drawings:



Model No.	LED Type	CC/CV	LED Qty	Power (W/m)	Voltage	PCB Width	Water-proof	Color	(CT:K)	Lumen (lm/m)
QL-F3528X30-P-24C	3528	CC Version	60	4.8W	24V	10mm	IP20-IP68	□ Pure White	6000-7000K	450-480
QL-F3528X30-N-24C	3528	CC Version	60	4.8W	24V	10mm	IP20-IP68	□ Nature White	4000-4500K	420-450
QL-F3528X30-W-24C	3528	CC Version	60	4.8W	24V	10mm	IP20-IP68	□ Warm White	2200/2700/3000K	360-420
QL-F3528X30-B-24C	3528	CC Version	60	4.8W	24V	10mm	IP20-IP68	■ Blue	620-630	100-110
QL-F3528X30-G-24C	3528	CC Version	60	4.8W	24V	10mm	IP20-IP68	■ Green	585-595	300-330
QL-F3528X60-P-24C	3528	CC Version	120	9.6W	24V	10mm	IP20-IP68	□ Pure White	455-470	900-950
QL-F3528X60-N-24C	3528	CC Version	120	9.6W	24V	10mm	IP20-IP68	□ Nature White	510-525	850-900
QL-F3528X60-W-24C	3528	CC Version	120	9.6W	24V	10mm	IP20-IP68	□ Warm White	6000-7000K	750-850
QL-F3528X60-B-24C	3528	CC Version	120	9.6W	24V	10mm	IP20-IP68	■ Blue	620-630	200-220
QL-F3528X60-G-24C	3528	CC Version	120	9.6W	24V	10mm	IP20-IP68	■ Green	585-595	600-660
QL-F3528X30-P-12/24	3528	CV Version	60	4.8W	12V/24V	8mm	IP20-IP68	□ Pure White	6000-7000K	450-480
QL-F3528X30-N-12/24	3528	CV Version	60	4.8W	12V/24V	8mm	IP20-IP68	□ Nature White	4000-4500K	420-450
QL-F3528X30-W-12/24	3528	CV Version	60	4.8W	12V/24V	8mm	IP20-IP68	□ Warm White	2200/2700/3000K	360-420
QL-F3528X30-R-12/24	3528	CV Version	60	4.8W	12V/24V	8mm	IP20-IP68	■ Red	620-630	130-150
QL-F3528X30-Y-12/24	3528	CV Version	60	4.8W	12V/24V	8mm	IP20-IP68	■ Yellow	585-595	130-150
QL-F3528X30-B-12/24	3528	CV Version	60	4.8W	12V/24V	8mm	IP20-IP68	■ Blue	455-470	100-110
QL-F3528X30-G-12/24	3528	CV Version	60	4.8W	12V/24V	8mm	IP20-IP68	■ Green	510-525	300-330
QL-F3528X60-P-12/24	3528	CV Version	120	9.6W	12V/24V	8mm	IP20-IP68	□ Pure White	6000-7000K	900-950
QL-F3528X60-N-12/24	3528	CV Version	120	9.6W	12V/24V	8mm	IP20-IP68	□ Nature White	4000-4500K	850-900
QL-F3528X60-W-12/24	3528	CV Version	120	9.6W	12V/24V	8mm	IP20-IP68	□ Warm White	2200/2700/3000K	750-850
QL-F3528X60-R-12/24	3528	CV Version	120	9.6W	12V/24V	8mm	IP20-IP68	■ Red	620-630	260-300
QL-F3528X60-Y-12/24	3528	CV Version	120	9.6W	12V/24V	8mm	IP20-IP68	■ Yellow	585-595	260-300
QL-F3528X60-B-12/24	3528	CV Version	120	9.6W	12V/24V	8mm	IP20-IP68	■ Blue	455-470	200-220
QL-F3528X60-G-12/24	3528	CV Version	120	9.6W	12V/24V	8mm	IP20-IP68	■ Green	510-525	600-660

Remark: X stands for waterproof version, A stands for non-waterproof version, B and S stands for IP54 waterproof version
 C stands for IP67 waterproof version, D stands for IP68 waterproof version
 CC means constant current version, CV means Constant Voltage Version



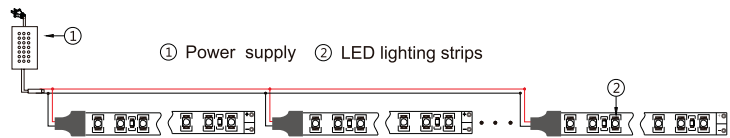
CRI ≥95/90 High Density LED Strips



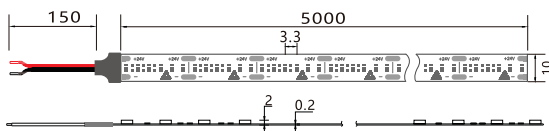
Features:

- LED: SMD2016 and SMD3528
- Constant Current Version and Constant Voltage Version
- LED Qty: 300LED/m, 240LED/m, 228LED/m, 180LED/m
- Power: 38.4W/m, 19.2W/m, 18W/m, 14.4W/m
- Voltage: DC24V
- Color: Warm White, Nature White, Pure White
- Single-Line Cutting: 6LED for DC24V version

Connections:

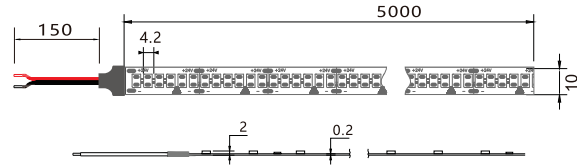


Dimension Drawings:



300LED/m Strips

Unit:mm



240LED/m CV Strips

Unit:mm

Model No.	LED Type	CC/CV	LED Qty	Power (W/m)	Voltage	CRI(Ra)	PCB Width	Waterproof	Color	λ (Nm)/(CT:K)	lumen (lm/m)
QL-F2016A240SA-W-24	SMD2016 Two-Row	CV Version	480	38.4W	24V	≥90	15mm	IP20	□ Warm White	2200/2700K	2700-2800
□ Nature White									3000/3500K	2900-3000	
□ Pure White									4000/5000K	3200-3400	
QL-F2016A150SA-W-24	SMD2016	CV Version	300	24W	24V	≥90	10mm	IP20	□ Warm White	2200/2700K	1700-1800
□ Nature White									3000/3500K	1850-1950	
□ Pure White									4000/5000K	2000-2100	
QL-F2016X120SA-W-24	SMD2016	CV Version	240	19.2W	24V	≥90	10mm	IP20 IP67	□ Warm White	2200/2700K	1350-1450
□ Nature White									3000/3500K	1500-1600	
□ Pure White									4000/5000K	1600-1700	
QL-F3528A120SAL-W-24-S1	SMD3528	CV Version	240	19.2	24V	≥95	10mm	IP20	□ Warm White	2200/2700/3000K	1600-1700
□ Nature White									4000-4500K	1700-1800	
□ Pure White									6000-7000K	1800-1900	
■ Blue									455-470	400-450	
■ Green									510-525	1250-1350	
QL-F3528A90SAL-W-24-S1	SMD3528	CV Version	180	14.4	24V	≥95	10mm	IP20	□ Warm White	2200/2700/3000K	1000-1100
□ Nature White									4000-4500K	1100-12000	
□ Pure White									6000-7000K	1200-1300	
■ Blue									455-470	300-350	
■ Green									510-525	950-1000	
QL-F3528A114SA-W-24C	SMD3528	CV Version	228	18	24V	≥95	12mm	IP20	□ Warm White	2200/2700/3000K	1450-1500
□ Nature White									4000-4500K	1500-1550	
□ Pure White									6000-7000K	1550-1600	
■ Blue									455-470	400-420	
■ Green									510-525	1200-1300	

Remark: X stands for waterproof version, A stands for non-waterproof version, B and S stands for IP54 waterproof version
 C stands for IP67 waterproof version, D stands for IP68 waterproof version
 CC means constant current version, CV means Constant Voltage Version



CRI ≥ 90 Economic SMD2525 LED Strips

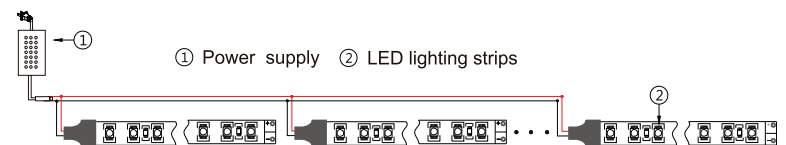
EcoDesign



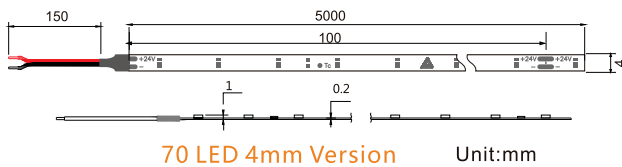
Features:

- LED: CRI ≥ 90 SMD2525
- Power: 4.8W/m, 8.5W/m, 9.6W/m, 12W/m, 16W/m, 16W/m, 21W/m, 34W/m
- Voltage: DC24V
- Color: Warm White, Nature White, Pure White
- Waterproof: IP20, IP67
- Comply with the European ErP EcoDesign regulation.

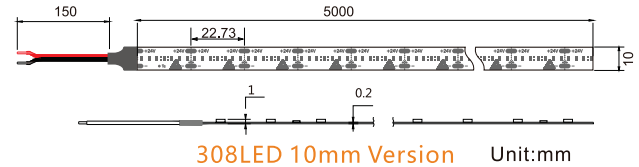
Connections:



Dimension Drawings:



70 LED 4mm Version Unit:mm



308 LED 10mm Version Unit:mm

Model No.	LED Type	CC/CV	LED Qty	Power (W/m)	Voltage	CRI(Ra)	PCB Width	Cutting (mm)	Water-proof	Color	λ(Nm)/(CT:K)	Lumen (lm/m)	Energy efficiency class
QL-F2525X35SA-W-24-4CES	SMD2525	CV Version	70	4.8W	24V	≥90	4mm	100mm (7LED)	IP20 IP67	□ Warm White	2700/3000/3500K	435-465	F
□ Nature White										3500/4000K	465-495		
□ Pure White										5500/6500K	495-525		
QL-F2525X70SA-W-24-4CES	SMD2525	CV Version	140	9.6W	24V	≥90	4mm	50mm (7LED)	IP20 IP67	□ Warm White	2700/3000/3500K	900-950	F
□ Nature White										3500/4000K	950-1000		
□ Pure White										5500/6500K	1000-1050		
QL-F2525X91SA-W-24-4CES	SMD2525	CV Version	182	12W	24V	≥90	4mm	38.46mm (7LED)	IP20 IP67	□ Warm White	2700/3000/3500K	1200-1250	F
□ Nature White										3500/4000K	1250-1300		
□ Pure White										5500/6500K	1300-1360		
QL-F2525X35SA-W-24-CES	SMD2525	CV Version	70	4.8W	24V	≥90	8mm	100mm (7LED)	IP20 IP67	□ Warm White	2700/3000/3500K	435-465	F
□ Nature White										3500/4000K	465-495		
□ Pure White										5500/6500K	495-525		
QL-F2525X70SA-W-24-CES	SMD2525	CV Version	140	9.6W	24V	≥90	8mm	50mm (7LED)	IP20 IP67	□ Warm White	2700/3000/3500K	900-950	F
□ Nature White										3500/4000K	950-1000		
□ Pure White										5500/6500K	1000-1050		
QL-F2525X91SA-W-24-CES	SMD2525	CV Version	182	12W	24V	≥90	8mm	38.46mm (7LED)	IP20 IP67	□ Warm White	2700/3000/3500K	1200-1250	F
□ Nature White										3500/4000K	1250-1300		
□ Pure White										5500/6500K	1300-1360		
QL-F2525X119SA-W-24-CES	SMD2525	CV Version	238	16W	24V	≥90	10mm	29.41mm (7LED)	IP20 IP67	□ Warm White	2700/3000/3500K	1600-1650	F
□ Nature White										3500/4000K	1650-1700		
□ Pure White										5500/6500K	1700-1780		
QL-F2525X154SA-W-24-CES	SMD2525	CV Version	308	21W	24V	≥90	10mm	22.73mm (7LED)	IP20 IP67	□ Warm White	2700/3000/3500K	2010-2110	F
□ Nature White										3500/4000K	2110-2210		
□ Pure White										5500/6500K	2210-2310		
QL-F2525X252SA-W-24-CES	SMD2525	CV Version	504	34W	24V	≥90	15mm Double-Row	27.77mm (7LED)	IP20 IP67	□ Warm White	2700/3000/3500K	3500-3600	F
□ Nature White										3500/4000K	3600-3700		
□ Pure White										5500/6500K	3700-3780		
QL-F2525X63SA-W-24C-CES	SMD2525	CV Version	126	8.5W	24V	≥90	10mm	55.55mm (7LED)	IP20 IP67	□ Warm White	2700/3000/3500K	800-850	F
□ Nature White										3500/4000K	850-900		
□ Pure White										5500/6500K	900-950		

Remark: X stands for waterproof version, A stands for IP20 non-waterproof version, C stands for IP67 waterproof version.
CC means Constant Current version, CV means Constant Voltage version.

CRI ≥ 90 SMD2216 LED Strips

EcoDesign

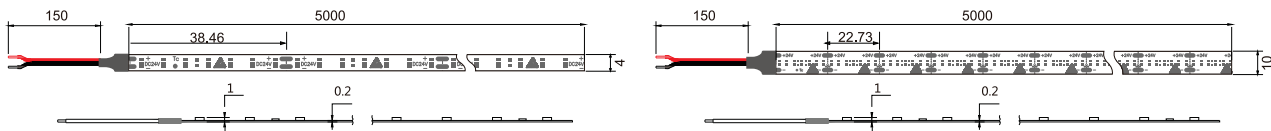


- Ra+90
- CC/CV Version

Features:

- LED: CRI ≥ 90 SMD2216
- Constant Current Version and constant voltage version
- LED Qty: 70LED/m, 126LED/m, 140LED/m, 182LED/m, 238LED/m, 308LED/m, 504LED/m
- Power: 4.5W/m, 8.5W/m, 9.2W/m, 12W/m, 16W/m, 21W/m, 34W/m
- Voltage: DC24V
- Color: Warm White, Nature White, Pure White
- Waterproof: IP20, IP67
- Comply with the European ErP EcoDesign regulation.

Dimension Drawings:



182LED/m Version Unit:mm

308LED/m Version Unit:mm

Model No.	LED Type	CC/CV	LED Qty	Power (W/m)	Voltage (DC)	CRI (Ra)	PCB Width	Cutting (mm)	Water proof	Color	(CT:K)	Lumen (lm/m)	Energy efficiency class
QL-F2216A35SA-W-24-4	SMD2216	CV Version	70	4.5W	24V	≥90	4mm	100mm 7LED	IP20	☐ Warm White	2200/2700/3000K	465-485	F
QL-F2216A35SA-N-24-4										☐ NatureWhite	3500/4000K	485-505	
QL-F2216A35SA-P-24-4										☐ Pure White	5000/6500K	505-525	
QL-F2216A70SA-W-24-4	SMD2216	CV Version	140	9.2W	24V	≥90	4mm	50mm 7LED	IP20	☐ Warm White	2200/2700/3000K	900-950	F
QL-F2216A70SA-N-24-4										☐ NatureWhite	3500/4000K	950-1000	
QL-F2216A70SA-P-24-4										☐ Pure White	5000/6500K	1000-1050	
QL-F2216A91SA-W-24-4	SMD2216	CV Version	182	12W	24V	≥90	4mm	38.46mm 7LED	IP20	☐ Warm White	2200/2700/3000K	1210-1260	F
QL-F2216A91SA-N-24-4										☐ NatureWhite	3500/4000K	1260-1310	
QL-F2216A91SA-P-24-4										☐ Pure White	5000/6500K	1310-1360	
QL-F2216X35SA-W-24	SMD2216	CV Version	70	4.5W	24V	≥90	8mm	100mm 7LED	IP20 IP67	☐ Warm White	2200/2700/3000K	465-485	F
QL-F2216X35SA-N-24										☐ NatureWhite	3500/4000K	485-505	
QL-F2216X35SA-P-24										☐ Pure White	5000/6500K	505-525	
QL-F2216X70SA-W-24	SMD2216	CV Version	140	9.2W	24V	≥90	8mm	50mm 7LED	IP20 IP67	☐ Warm White	2200/2700/3000K	900-950	F
QL-F2216X70SA-N-24										☐ NatureWhite	3500/4000K	950-1000	
QL-F2216X70SA-P-24										☐ Pure White	5000/6500K	1000-1050	
QL-F2216X91SA-W-24	SMD2216	CV Version	182	12W	24V	≥90	8mm	38.46mm 7LED	IP20 IP67	☐ Warm White	2200/2700/3000K	1210-1260	F
QL-F2216X91SA-N-24										☐ NatureWhite	3500/4000K	1260-1310	
QL-F2216X91SA-P-24										☐ Pure White	5000/6500K	1310-1360	
QL-F2216X119SA-W-24	SMD2216	CV Version	238	16W	24V	≥90	10mm	29.41mm 7LED	IP20 IP67	☐ Warm White	2200/2700/3000K	1600-1660	F
QL-F2216X119SA-N-24										☐ NatureWhite	3500/4000K	1660-1720	
QL-F2216X119SA-P-24										☐ Pure White	5000/6500K	1720-1780	
QL-F2216X154SA-W-24	SMD2216	CV Version	308	21W	24V	≥90	10mm	22.73mm 7LED	IP20 IP67	☐ Warm White	2200/2700/3000K	2130-2190	F
QL-F2216X154SA-W-24										☐ NatureWhite	3500/4000K	2190-2250	
QL-F2216X154SA-W-24										☐ Pure White	5000/6500K	2250-2310	
QL-F2216X154SA-W-24-8	SMD2216	CV Version	308	21W	24V	≥90	8mm	22.73mm 7LED	IP20 IP67	☐ Warm White	2200/2700/3000K	2130-2190	F
QL-F2216X154SA-W-24-8										☐ NatureWhite	3500/4000K	2190-2250	
QL-F2216X154SA-W-24-8										☐ Pure White	5000/6500K	2250-2310	
QL-F2216A252SA-W-24	SMD2216	CV Version	504	34W	24V	≥90	15mm Double Row	27.77mm 7LED	IP20	☐ Warm White	2200/2700/3000K	3480-3580	F
QL-F2216A252SA-N-24										☐ NatureWhite	3500/4000K	3580-3680	
QL-F2216A252SA-P-24										☐ Pure White	5000/6500K	3680-3780	
QL-F2216X63SA-W-24C	SMD2216	CC Version	126	8.5W	24V	≥90	10mm	55.55mm 7LED	IP20 IP67	☐ Warm White	2200/2700/3000K	860-890	F
QL-F2216X63SA-N-24C										☐ NatureWhite	3500/4000K	890-920	
QL-F2216X63SA-P-24C										☐ Pure White	5000/6500K	920-950	

Remark: X stands for waterproof version, A stands for IP20 version, B and S stands for IP54 version, C stands for IP67 version and D stands for IP68 version
CC means Constant Current version, CV means Constant Voltage version.



CRI ≥ 90 Economic SMD2016 LED Strips

EcoDesign

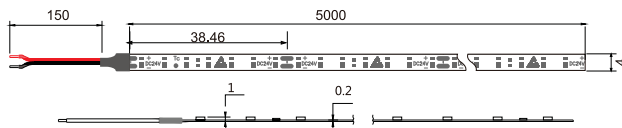
- Ra+90
- CC/CV Version



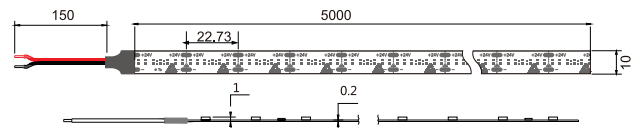
Features:

- LED: CRI≥90 SMD2016
- Constant Current Version and constant voltage version
- LED Qty: 70LED/m, 126LED/m, 140LED/m, 182LED/m, 238LED/m, 308LED/m, 504LED/m
- Power: 4.5W/m, 8.5W/m, 9.2W/m, 12W/m, 16W/m, 21W/m, 34W/m
- Voltage: DC24V
- Color: Warm White, Nature White, Pure White
- Waterproof: IP20, IP67
- Comply with the European ErP EcoDesign regulation.

Dimension Drawings:



182LED/m Version Unit:mm



308LED/m Version Unit:mm

Model No.	LED Type	CC/CV	LED Qty	Power (W/m)	Voltage (DC)	CRI (Ra)	PCB Width	Cutting (mm)	Water proof	Color	(CT:K)	Lumen (lm/m)	Energy efficiency class
QL-F2016A35SA-W-24-4CES	SMD2016	CV Version	70	4.5W	24V	≥90	4mm	100mm 7LED	IP20	□ Warm White	2200/2700/3000K	465-485	F
QL-F2016A35SA-N-24-4CES										□ NatureWhite	3500/4000K	485-505	
QL-F2016A35SA-P-24-4CES										□ Pure White	5000/6500K	505-525	
QL-F2016A70SA-W-24-4CES	SMD2016	CV Version	140	9.2W	24V	≥90	4mm	50mm 7LED	IP20	□ Warm White	2200/2700/3000K	900-950	F
QL-F2016A70SA-N-24-4CES										□ NatureWhite	3500/4000K	950-1000	
QL-F2016A70SA-P-24-4CES										□ Pure White	5000/6500K	1000-1050	
QL-F2016A91SA-W-24-4CES	SMD2016	CV Version	182	12W	24V	≥90	4mm	38.46mm 7LED	IP20	□ Warm White	2200/2700/3000K	1210-1260	F
QL-F2016A91SA-N-24-4CES										□ NatureWhite	3500/4000K	1260-1310	
QL-F2016A91SA-P-24-4CES										□ Pure White	5000/6500K	1310-1360	
QL-F2016X35SA-W-24-CES	SMD2016	CV Version	70	4.5W	24V	≥90	8mm	100mm 7LED	IP20 IP67	□ Warm White	2200/2700/3000K	465-485	F
QL-F2016X35SA-N-24-CES										□ NatureWhite	3500/4000K	485-505	
QL-F2016X35SA-P-24-CES										□ Pure White	5000/6500K	505-525	
QL-F2016X70SA-W-24-CES	SMD2016	CV Version	140	9.2W	24V	≥90	8mm	50mm 7LED	IP20 IP67	□ Warm White	2200/2700/3000K	900-950	F
QL-F2016X70SA-N-24-CES										□ NatureWhite	3500/4000K	950-1000	
QL-F2016X70SA-P-24-CES										□ Pure White	5000/6500K	1000-1050	
QL-F2016X91SA-W-24-CES	SMD2016	CV Version	182	12W	24V	≥90	8mm	38.46mm 7LED	IP20 IP67	□ Warm White	2200/2700/3000K	1210-1260	F
QL-F2016X91SA-N-24-CES										□ NatureWhite	3500/4000K	1260-1310	
QL-F2016X91SA-P-24-CES										□ Pure White	5000/6500K	1310-1360	
QL-F2016X119SA-W-24-CES	SMD2016	CV Version	238	16W	24V	≥90	10mm	29.41mm 7LED	IP20 IP67	□ Warm White	2200/2700/3000K	1600-1660	F
QL-F2016X119SA-N-24-CES										□ NatureWhite	3500/4000K	1660-1720	
QL-F2016X119SA-P-24-CES										□ Pure White	5000/6500K	1720-1780	
QL-F2016X154SA-W-24-CES	SMD2016	CV Version	308	21W	24V	≥90	10mm	22.73mm 7LED	IP20 IP67	□ Warm White	2200/2700/3000K	2130-2190	F
QL-F2016X154SA-N-24-CES										□ NatureWhite	3500/4000K	2190-2250	
QL-F2016X154SA-P-24-CES										□ Pure White	5000/6500K	2250-2310	
QL-F2016A252SA-W-24-CES	SMD2016	CV Version	504	34W	24V	≥90	15mm Double Row	27.77mm 7LED	IP20	□ Warm White	2200/2700/3000K	3480-3580	F
QL-F2016A252SA-N-24-CES										□ NatureWhite	3500/4000K	3580-3680	
QL-F2016A252SA-P-24-CES										□ Pure White	5000/6500K	3680-3780	
QL-F2016X63SA-W-24C-CES	SMD2016	CC Version	126	8.5W	24V	≥90	10mm	55.55mm 7LED	IP20 IP67	□ Warm White	2200/2700/3000K	860-890	F
QL-F2016X63SA-N-24C-CES										□ NatureWhite	3500/4000K	890-920	
QL-F2016X63SA-P-24C-CES										□ Pure White	5000/6500K	920-950	

Remark: X stands for waterproof version, A stands for IP20 version, B and S stands for IP54 version, C stands for IP67 version and D stands for IP68 version
CC means Constant Current version, CV means Constant Voltage version.

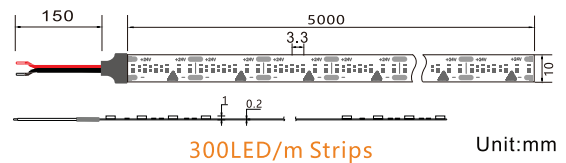
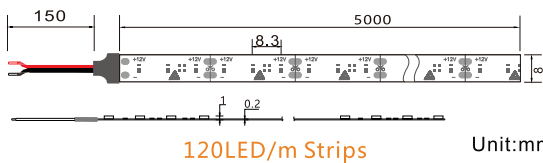
CRI \geq 90 SMD2016 LED Strips



Features:

- LED: CRI \geq 90 SMD2016
- Constant Voltage and Constant Current Version
- LED Qty: 480LED/m, 300LED/m, 240LED/m, 180LED/m, 120LED/m, 60LED/m
- Power: 38.4W/m, 24W/m, 19.2W/m, 14.4W/m, 9.6W/m, 4.8W/m
- Voltage: DC12V, DC24V
- Color: Warm White, Nature White, Pure White
- Waterproof: IP20, IP67
- Single-Line Cutting: 6LED for DC24V version, and 3LED for DC12V version

Dimension Drawings:



Model No.	LED Type	CC/CV	LED Qty	Power (W/m)	Voltage	CRI(Ra)	PCB Width	Water-proof	Color	λ (Nm)/(CT:K)	Lumen (lm/m)
QL-F2016X30SA-W-12/24	SMD2016	CV Version	60	4.8W	12V/24V	\geq 90	8mm	IP20	□ Warm White	2200/2700K	340-360
QL-F2016X30SA-N-12/24									□ Nature White	3000/3500K	370-390
QL-F2016X30SA-P-12/24									□ Pure White	6000-6500K	400-420
QL-F2016X60SA-W-12/24	SMD2016	CV Version	120	9.6W	12V/24V	\geq 90	8mm	IP20	□ Warm White	2200/2700K	680-720
QL-F2016X60SA-N-12/24									□ Nature White	3000/3500K	740-780
QL-F2016X60SA-P-12/24									□ Pure White	4000/5000K	800-840
QL-F2016X90SA-W-12/24	SMD2016	CV Version	180	14.4W	12V/24V	\geq 90	8mm	IP20	□ Warm White	2200/2700K	1000-1100
QL-F2016X90SA-N-12/24									□ Nature White	3000/3500K	1100-1200
QL-F2016X90SA-P-12/24									□ Pure White	4000/5000K	1200-1300
QL-F2016X120SA-W-12/24	SMD2016	CV Version	240	19.2W	12/24V	\geq 90	10mm	IP20	□ Warm White	2200/2700K	1350-1450
QL-F2016X120SA-N-12/24									□ Nature White	3000/3500K	1500-1600
QL-F2016X120SA-P-12/24									□ Pure White	4000/5000K	1600-1700
QL-F2016X150SA-W-12/24	SMD2016	CV Version	300	24W	12/24V	\geq 90	10mm	IP20	□ Warm White	2200/2700K	1700-1800
QL-F2016X150SA-N-12/24									□ Nature White	3000/3500K	1850-1950
QL-F2016X150SA-P-12/24									□ Pure White	4000/5000K	2000-2100
QL-F2016X240SA-W-24	SMD2016 Two-Row	CV Version	480	38.4W	24V	\geq 90	15mm	IP20	□ Warm White	2200/2700K	2700-2800
QL-F2016X240SA-N-24									□ Nature White	3000/3500K	2900-3000
QL-F2016X240SA-P-24									□ Pure White	4000/5000K	3200-3400
QL-F2016X30SA-W-12/24-4	SMD2016	CV Version	60	4.8W	12V/24V	\geq 90	4mm	IP20	□ Warm White	2200/2700K	340-360
QL-F2016X30SA-N-12/24-4									□ Nature White	3000/3500K	370-390
QL-F2016X30SA-P-12/24-4									□ Pure White	4000/5000K	400-420
QL-F2016X60SA-W-12/24-4	SMD2016	CV Version	120	9.6W	12V/24V	\geq 90	4mm	IP20	□ Warm White	2200/2700K	680-720
QL-F2016X60SA-N-12/24-4									□ Nature White	3000/3500K	740-780
QL-F2016X60SA-P-12/24-4									□ Pure White	4000/5000K	800-840
QL-F2016X90SA-W-12/24-4	SMD2016	CV Version	180	14.4W	12V/24V	\geq 90	4mm	IP20	□ Warm White	2200/2700K	1000-1100
QL-F2016X90SA-N-12/24-4									□ Nature White	3000/3500K	1100-1200
QL-F2016X90SA-P-24-4									□ Pure White	4000/5000K	1200-1300
QL-F2016X30SA-W-24C	SMD2016	With IC CC Version	60	4.8W	24V	\geq 90	10mm	IP20	□ Warm White	2200/2700K	340-360
QL-F2016X30SA-N-24C									□ Nature White	3000/3500K	370-390
QL-F2016X30SA-P-24C									□ Pure White	4000/5000K	400-420
QL-F2016X60SA-W-24C	SMD2016	With IC CC Version	120	9.6W	24V	\geq 90	10mm	IP20	□ Warm White	2200/2700K	680-720
QL-F2016X60SA-N-24C									□ Nature White	3000/3500K	740-780
QL-F2016X60SA-P-24C									□ Pure White	4000/5000K	800-840
QL-F2016X120TSA-H-12/24	SMD2016	CV Version	240	19.2W	12V/24V	\geq 90	10mm	IP20 IP67	□ □ Dual White	2500-6000K	1500-1600
QL-F2016X240TSA-H-12/24	SMD2016 Two-Row	CV Version	480	38.4W	12/24V	\geq 90	12mm	IP20	□ □ Dual White	2500-6000K	3000-3200



CRI ≥ 90 SMD5050 LED Strips



- Ra+90
- CC/CV Version

Features:

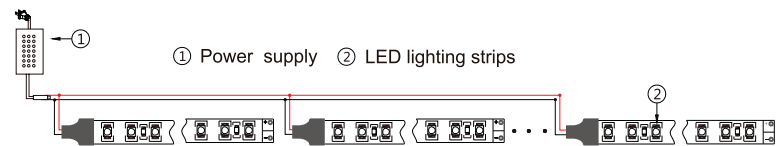
- LED: CRI ≥ 90 SMD5050
- DC24V Constant voltage version
- LED Qty: 42LED/m, 70LED/m
- Power: 8.2W/m, 14W/m
- Voltage: DC24V
- Color: Warm White, Nature White, Pure White
- Waterproof: IP20, IP67
- Comply with the European ErP EcoDesign regulation.



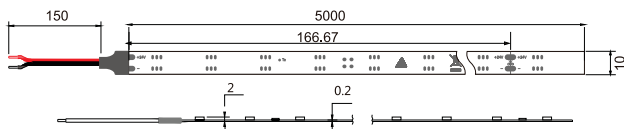
Applications:

- Cove Lighting
- Architectural decorative lighting
- Archway, canopy and bridge Lighting
- Auditorium walkway lighting
- Backlighting for signage letters
- Channel letter lighting

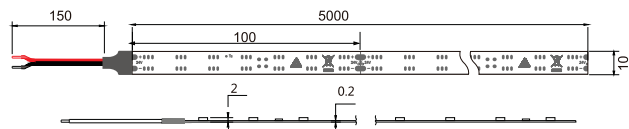
Connections:



Dimension Drawings:



42LED/m Version Unit:mm



70LED/m Version Unit:mm

Model No.	LED Type	CC/CV	LED Qty	Power (W/m)	Voltage (DC)	CRI (Ra)	PCB Width	Cutting (mm)	Water proof	Color	(CT:K)	Lumen (lm/m)	Energy efficiency class
QL-F5050X21SA-W-24	SMD5050	CV Version	42	8.2W	24V	≥ 90	10mm	166.67mm 7LED	IP20 IP54 IP67 IP68	☐ Warm White	2700/3000K	830-870	F
QL-F5050X21SA-N-24										☐ NatureWhite	4000K	870-910	
QL-F5050X21SA-P-24										☐ Pure White	6500K	910-950	
QL-F5050X35SA-W-24	SMD5050	CV Version	70	14W	24V	≥ 90	10mm	100mm 7LED	IP20 IP54 IP67 IP68	☐ Warm White	2700/3000K	1420-1470	F
QL-F5050X35SA-N-24										☐ NatureWhite	4000K	1470-1520	
QL-F5050X35SA-P-24										☐ Pure White	6500K	1520-1570	

Remark: X stands for waterproof version, A stands for IP20 non-waterproof version, C stands for IP67 waterproof version.
CC means Constant Current version, CV means Constant Voltage version.

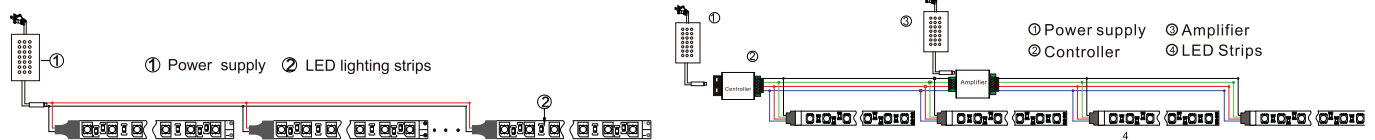
SMD5050 LED Flexible Strips



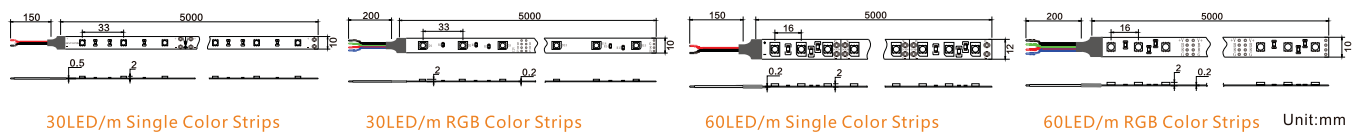
Features:

- LED: SMD5050
- LED Quantity: 30LED/m and 60LED/m
- Power: 7.2W/m and 14.4W/m
- Voltage: DC12V/DC24V
- PCB Width: 10mm
- Color: RGB, Red, Blue, Green, Yellow, Warm White, Nature White, Pure White
- Waterproof: IP20/IP54/IP67/IP68
- Cutting: 3 LED cuttable for DC12V version and 5 or 6 LED cuttable for DC24V version

Connections:



Dimension Drawings:



Model No.	LED Type	CC/CV	LED Qty	Power (W/m)	Voltage	PCB Width	Water-proof	Color	Lumen (lm/m)
QL-F5050X30-P-24C	SMD5050	CC Version	60	14.4W	24V	10mm	IP20-IP68	□ Pure White	1100-1200
QL-F5050X30-N-24C	SMD5050	CC Version	60	14.4W	24V	10mm	IP20-IP68	□ Nature White	1200-1250
QL-F5050X30-W-24C	SMD5050	CC Version	60	14.4W	24V	10mm	IP20-IP68	□ Warm White	1250-1350
QL-F5050X30-C-24C	SMD5050	CC Version	60	14.4W	24V	12mm	IP20-IP68	■ RGB	550-600
QL-F5050X30-B-24C	SMD5050	CC Version	60	14.4W	24V	10mm	IP20-IP68	■ Blue	300-320
QL-F5050X30-G-24C	SMD5050	CC Version	60	14.4W	24V	10mm	IP20-IP68	■ Green	950-1000
QL-F5050X15-P-12/24	SMD5050	CV Version	30	7.2W	12V/24V	10mm	IP20-IP68	□ Pure White	630-660
QL-F5050X15-N-12/24	SMD5050	CV Version	30	7.2W	12V/24V	10mm	IP20-IP68	□ Nature White	600-630
QL-F5050X15-W-12/24	SMD5050	CV Version	30	7.2W	12V/24V	10mm	IP20-IP68	□ Warm White	550-600
QL-F5050X15-C-12/24	SMD5050	CV Version	30	7.2W	12V/24V	10mm	IP20-IP68	■ RGB	280-300
QL-F5050X15-R-12/24	SMD5050	CV Version	30	7.2W	12V/24V	10mm	IP20-IP68	■ Red	420-450
QL-F5050X15-Y-12/24	SMD5050	CV Version	30	7.2W	12V/24V	10mm	IP20-IP68	■ Yellow	420-450
QL-F5050X15-B-12/24	SMD5050	CV Version	30	7.2W	12V/24V	10mm	IP20-IP68	■ Blue	150-160
QL-F5050X15-G-12/24	SMD5050	CV Version	30	7.2W	12V/24V	10mm	IP20-IP68	■ Green	480-500
QL-F5050X30-P-12/24	SMD5050	CV Version	60	14.4W	12V/24V	10mm	IP20-IP68	□ Pure White	1250-1300
QL-F5050X30-N-12/24	SMD5050	CV Version	60	14.4W	12V/24V	10mm	IP20-IP68	□ Nature White	1200-1250
QL-F5050X30-W-12/24	SMD5050	CV Version	60	14.4W	12V/24V	10mm	IP20-IP68	□ Warm White	1100-1200
QL-F5050X30-C-12/24	SMD5050	CV Version	60	14.4W	12V/24V	10mm	IP20-IP68	■ RGB	550-600
QL-F5050X30-R-12/24	SMD5050	CV Version	60	14.4W	12V/24V	10mm	IP20-IP68	■ Red	420-450
QL-F5050X30-Y-12/24	SMD5050	CV Version	60	14.4W	12V/24V	10mm	IP20-IP68	■ Yellow	420-450
QL-F5050X30-B-12/24	SMD5050	CV Version	60	14.4W	12V/24V	10mm	IP20-IP68	■ Blue	300-320
QL-F5050X30-G-12/24	SMD5050	CV Version	60	14.4W	12V/24V	10mm	IP20-IP68	■ Green	950-1000

Remark: X stands for waterproof version, A stands for non-waterproof version, B and S stands for IP54 waterproof version
 C stands for IP67 waterproof version, D stands for IP68 waterproof version
 CC means constant current version, CV means Constant Voltage Version



1LED Cutting Economic SMD2525 LED Strips

EcoDesign



- 1-LED-Cut
- Ra+90

Features:

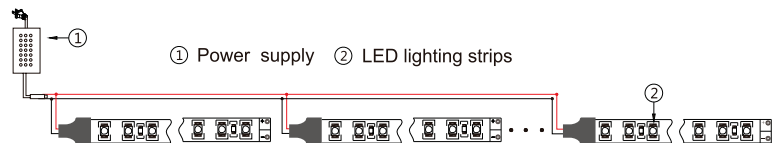
- LED: CRI \geq 90 SMD2525
- Power: 4.8W/m - 26.8W/m
- Voltage: DC24V
- Color: Warm White, Nature White, Pure White
- Waterproof: IP20, IP67
- Comply with the European ErP EcoDesign regulation.



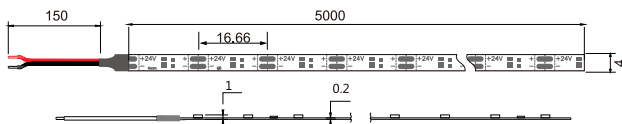
Applications:

- Cove Lighting
- Architectural decorative lighting
- Archway, canopy and bridge Lighting
- Auditorium walkway lighting
- Backlighting for signage letters
- Channel letter lighting

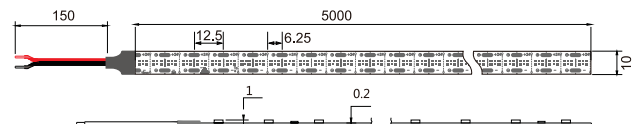
Connections:



Dimension Drawings:



3mm 120LED/m Version Unit:mm



10mm 320LED/m Version Unit:mm

Model No.	LED Type	CC/CV	LED Qty	Power (W/m)	Voltage	CRI (Ra)	PCB Width	Cutting (mm)	Water-proof	Color	λ (Nm)/(CT:K)	lumen (lm/m)	Energy efficiency class
QL-F2525X60SA-W-24-3CES1P	SMD2525	CV Version	120	10W	24V	≥ 90	3mm	8.33mm (1LED)	IP20	□ Warm White	2700/3000/3500K	870-920	F
□ Nature White										3500/4000K	920-970		
□ Pure White										5500/6500K	970-1020		
QL-F2525X30SA-W-24-4CES1P	SMD2525	CV Version	60	5W	24V	≥ 90	4mm	16.66mm (1LED)	IP20	□ Warm White	2700/3000/3500K	420-450	F
□ Nature White										3500/4000K	450-480		
□ Pure White										5500/6500K	480-510		
QL-F2525X60SA-W-24-4CES1P	SMD2525	CV Version	120	10W	24V	≥ 90	4mm	8.33mm (1LED)	IP20	□ Warm White	2700/3000/3500K	870-920	F
□ Nature White										3500/4000K	920-970		
□ Pure White										5500/6500K	970-1020		
QL-F2525X30SA-W-24-5CES1P	SMD2525	CV Version	60	5W	24V	≥ 90	5mm	16.66mm (1LED)	IP20	□ Warm White	2700/3000/3500K	420-450	F
□ Nature White										3500/4000K	450-480		
□ Pure White										5500/6500K	480-510		
QL-F2525X60SA-W-24-5CES1P	SMD2525	CV Version	120	10W	24V	≥ 90	5mm	8.33mm (1LED)	IP20	□ Warm White	2700/3000/3500K	870-920	F
□ Nature White										3500/4000K	920-970		
□ Pure White										5500/6500K	970-1020		
QL-F2525X30SA-W-24-6CES1P	SMD2525	CV Version	60	5W	24V	≥ 90	6mm	16.66mm (1LED)	IP20	□ Warm White	2700/3000/3500K	420-450	F
□ Nature White										3500/4000K	450-480		
□ Pure White										5500/6500K	480-510		
QL-F2525X60SA-W-24-6CES1P	SMD2525	CV Version	120	10W	24V	≥ 90	6mm	8.33mm (1LED)	IP20	□ Warm White	2700/3000/3500K	870-920	F
□ Nature White										3500/4000K	920-970		
□ Pure White										5500/6500K	970-1020		

Model No.	LED Type	CC/CV	LED Qty	Power (W/m)	Voltage	CRI (Ra)	PCB Width	Cutting (mm)	Water-proof	Color	λ (Nm)/(CT:K)	lumen (lm/m)	Energy efficiency class
QL-F2525X30SA-W-24-CES1P	SMD2525	CV Version	60	5W	24V	≥90	8mm	16.66mm (1LED)	IP20 IP67	☐ Warm White	2700/3000/3500K	420-450	F
☐ Nature White										3500/4000K	450-480		
☐ Pure White										5500/6500K	480-510		
QL-F2525X35SA-W-24-CES1P	SMD2525	CV Version	70	5.8W	24V	≥90	8mm	14.28mm (1LED)	IP20 IP67	☐ Warm White	2700/3000/3500K	490-520	F
☐ Nature White										3500/4000K	520-560		
☐ Pure White										5500/6500K	560-595		
QL-F2525X40SA-W-24-CES1P	SMD2525	CV Version	80	6.7W	24V	≥90	8mm	12.5mm (1LED)	IP20 IP67	☐ Warm White	2700/3000/3500K	560-600	F
☐ Nature White										3500/4000K	600-640		
☐ Pure White										5500/6500K	640-680		
QL-F2525X45SA-W-24-CES1P	SMD2525	CV Version	90	7.5W	24V	≥90	8mm	11.11mm (1LED)	IP20 IP67	☐ Warm White	2700/3000/3500K	640-680	F
☐ Nature White										3500/4000K	680-720		
☐ Pure White										5500/6500K	720-765		
QL-F2525X50SA-W-24-CES1P	SMD2525	CV Version	100	8.4W	24V	≥90	8mm	10mm (1LED)	IP20 IP67	☐ Warm White	2700/3000/3500K	730-770	F
☐ Nature White										3500/4000K	770-810		
☐ Pure White										5500/6500K	810-850		
QL-F2525X55SA-W-24-CES1P	SMD2525	CV Version	110	9.2W	24V	≥90	8mm	9.09mm (1LED)	IP20 IP67	☐ Warm White	2700/3000/3500K	810-850	F
☐ Nature White										3500/4000K	850-890		
☐ Pure White										5500/6500K	890-935		
QL-F2525X60SA-W-24-CES1P	SMD2525	CV Version	120	10W	24V	≥90	8mm	8.33mm (1LED)	IP20 IP67	☐ Warm White	2700/3000/3500K	870-920	F
☐ Nature White										3500/4000K	920-970		
☐ Pure White										5500/6500K	970-1020		
QL-F2525X65SA-W-24-CES1P	SMD2525	CV Version	130	10.9W	24V	≥90	8mm	7.69mm (1LED)	IP20 IP67	☐ Warm White	2700/3000/3500K	980-1010	F
☐ Nature White										3500/4000K	1010-1050		
☐ Pure White										5500/6500K	1050-1105		
QL-F2525X70SA-W-24-CES1P	SMD2525	CV Version	140	11.7W	24V	≥90	8mm	7.14mm (1LED)	IP20 IP67	☐ Warm White	2700/3000/3500K	1050-1105	F
☐ Nature White										3500/4000K	1105-1145		
☐ Pure White										5500/6500K	1145-1190		
QL-F2525X75SA-W-24-CES1P	SMD2525	CV Version	150	12.6W	24V	≥90	8mm	6.66mm (1LED)	IP20 IP67	☐ Warm White	2700/3000/3500K	1145-1190	F
☐ Nature White										3500/4000K	1190-1225		
☐ Pure White										5500/6500K	1225-1275		
QL-F2525X80SA-W-24-CES1P	SMD2525	CV Version	160	13.4W	24V	≥90	8mm	6.25mm (1LED)	IP20 IP67	☐ Warm White	2700/3000/3500K	1225-1275	F
☐ Nature White										3500/4000K	1275-1315		
☐ Pure White										5500/6500K	1315-1360		
QL-F2525X85SA-W-24-CES1P	SMD2525	CV Version	170	14.2W	24V	≥90	10mm	5.88mm (1LED)	IP20 IP67	☐ Warm White	2700/3000/3500K	1315-1360	F
☐ Nature White										3500/4000K	1360-1400		
☐ Pure White										5500/6500K	1400-1445		
QL-F2525X90SA-W-24-CES1P	SMD2525	CV Version	180	15.1W	24V	≥90	10mm	5.55mm (1LED)	IP20 IP67	☐ Warm White	2700/3000/3500K	1400-1445	F
☐ Nature White										3500/4000K	1445-1485		
☐ Pure White										5500/6500K	1485-1530		
QL-F2525X95SA-W-24-CES1P	SMD2525	CV Version	190	16W	24V	≥90	10mm	5.26mm (1LED)	IP20 IP67	☐ Warm White	2700/3000/3500K	1485-1535	F
☐ Nature White										3500/4000K	1535-1575		
☐ Pure White										5500/6500K	1575-1615		
QL-F2525X100SA-W-24-CES1P	SMD2525	CV Version	200	16.8W	24V	≥90	10mm	5mm (1LED)	IP20 IP67	☐ Warm White	2700/3000/3500K	1575-1615	F
☐ Nature White										3500/4000K	1615-1650		
☐ Pure White										5500/6500K	1650-1700		
QL-F2525X120SA-W-24-CES1P	SMD2525	CV Version	240	20W	24V	≥90	10mm	8.33mm (2LED)	IP20 IP67	☐ Warm White	2700/3000/3500K	1830-1900	F
☐ Nature White										3500/4000K	1900-1970		
☐ Pure White										5500/6500K	1970-2040		
QL-F2525X160SA-W-24-CES1P	SMD2525	CV Version	320	26.8W	24V	≥90	10mm	6.25mm (2LED)	IP20 IP67	☐ Warm White	2700/3000/3500K	2420-2530	F
☐ Nature White										3500/4000K	2520-2620		
☐ Pure White										5500/6500K	2620-2720		

Remark: X stands for waterproof version, A stands for IP20 non-waterproof version, C stands for IP67 waterproof version.
CC means Constant Current version, CV means Constant Voltage version.



1LED Cutting Economic SMD2835 LED Strips

EcoDesign

- 1-LED-Cut
- 130lm/W
- Ra+90



Features:

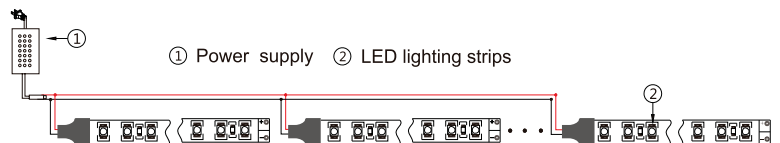
- LED: CRI≥90 SMD2835
- Power: 5W/m-20W/m
- Voltage: DC24V
- Color: Warm White, Nature White, Pure White
- Waterproof: IP20, IP67
- Comply with the European ErP EcoDesign regulation.



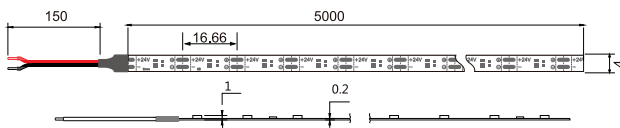
Applications:

- Cove Lighting
- Architectural decorative lighting
- Archway, canopy and bridge Lighting
- Auditorium walkway lighting
- Backlighting for signage letters
- Channel letter lighting

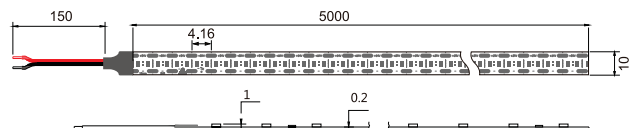
Connections:



Dimension Drawings:



5mm 60LED Version Unit:mm



10mm 240LED Version Unit:mm

Model No.	LED Type	CC/CV	LED Qty	Power (W/m)	Voltage	CRI(Ra)	PCB Width	Cutting (mm)	Water-proof	Color	λ (Nm)/(CT:K)	Lumen (lm/m)	Energy efficiency class
QL-F2835X30SA-W-24-5CES1P	SMD2835	CV Version	60	5W	24V	≥90	5mm	16.66mm (1LED)	IP20	□ Warm White	2700/3000/3500K	520-670	E
□ Nature White										3500/4000K	570-620		
□ Pure White										5500/6500K	620-670		
QL-F2835X60SA-W-24-5CES1P	SMD2835	CV Version	120	10W	24V	≥90	5mm	8.33mm (1LED)	IP20	□ Warm White	2700/3000/3500K	1200-1240	E
□ Nature White										3500/4000K	1240-1290		
□ Pure White										5500/6500K	1290-1340		
QL-F2835X30SA-W-24-6CES1P	SMD2835	CV Version	60	5W	24V	≥90	6mm	16.66mm (1LED)	IP20	□ Warm White	2700/3000/3500K	520-670	E
□ Nature White										3500/4000K	570-620		
□ Pure White										5500/6500K	620-670		
QL-F2835X60SA-W-24-6CES1P	SMD2835	CV Version	120	10W	24V	≥90	6mm	8.33mm (1LED)	IP20	□ Warm White	2700/3000/3500K	1200-1240	E
□ Nature White										3500/4000K	1240-1290		
□ Pure White										5500/6500K	1290-1340		

Remark: X stands for waterproof version, A stands for IP20 non-waterproof version, C stands for IP67 waterproof version.

CC means Constant Current version, CV means Constant Voltage version.

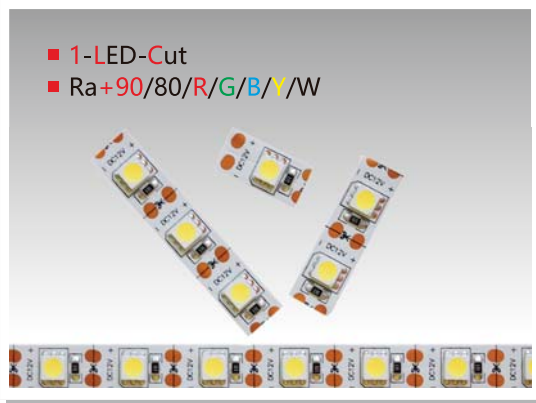
Model No.	LED Type	CC/CV	LED Qty	Power (W/m)	Voltage	CRI (Ra)	PCB Width	Cutting (mm)	Water-proof	Color	λ (Nm)/(CT:K)	Lumen (lm/m)	Energy efficiency class
QL-F2835X30SA-W-24-CES1P	SMD2835	CV Version	60	5W	24V	≥ 90	8mm	16.66mm (1LED)	IP20 IP67	☐ Warm White	2700/3000/3500K	520-670	E
QL-F2835X30SA-N-24-CES1P										☐ Nature White	3500/4000K	570-620	
QL-F2835X30SA-P-24-CES1P										☐ Pure White	5500/6500K	620-670	
QL-F2835X35SA-W-24-CES1P	SMD2835	CV Version	70	5.8W	24V	≥ 90	8mm	14.28mm (1LED)	IP20 IP67	☐ Warm White	2700/3000/3500K	630-680	E
QL-F2835X35SA-N-24-CES1P										☐ Nature White	3500/4000K	680-730	
QL-F2835X35SA-P-24-CES1P										☐ Pure White	5500/6500K	730-780	
QL-F2835X40SA-W-24-CES1P	SMD2835	CV Version	80	6.7W	24V	≥ 90	8mm	12.5mm (1LED)	IP20 IP67	☐ Warm White	2700/3000/3500K	750-800	E
QL-F2835X40SA-N-24-CES1P										☐ Nature White	3500/4000K	800-850	
QL-F2835X40SA-P-24-CES1P										☐ Pure White	5500/6500K	850-900	
QL-F2835X45SA-W-24-CES1P	SMD2835	CV Version	90	7.5W	24V	≥ 90	8mm	11.11mm (1LED)	IP20 IP67	☐ Warm White	2700/3000/3500K	850-900	E
QL-F2835X45SA-N-24-CES1P										☐ Nature White	3500/4000K	900-950	
QL-F2835X45SA-P-24-CES1P										☐ Pure White	5500/6500K	950-1010	
QL-F2835X50SA-W-24-CES1P	SMD2835	CV Version	100	8.4W	24V	≥ 90	8mm	10mm (1LED)	IP20 IP67	☐ Warm White	2700/3000/3500K	970-1020	E
QL-F2835X50SA-N-24-CES1P										☐ Nature White	3500/4000K	1020-1070	
QL-F2835X50SA-P-24-CES1P										☐ Pure White	5500/6500K	1070-1120	
QL-F2835X55SA-W-24-CES1P	SMD2835	CV Version	110	9.2W	24V	≥ 90	8mm	9.09mm (1LED)	IP20 IP67	☐ Warm White	2700/3000/3500K	1150-1200	E
QL-F2835X55SA-N-24-CES1P										☐ Nature White	3500/4000K	1200-1250	
QL-F2835X55SA-P-24-CES1P										☐ Pure White	5500/6500K	1250-1230	
QL-F2835X60SA-W-24-CES1P	SMD2835	CV Version	120	10W	24V	≥ 90	8mm	8.33mm (1LED)	IP20 IP67	☐ Warm White	2700/3000/3500K	1200-1240	E
QL-F2835X60SA-N-24-CES1P										☐ Nature White	3500/4000K	1240-1290	
QL-F2835X60SA-P-24-CES1P										☐ Pure White	5500/6500K	1290-1340	
QL-F2835X65SA-W-24-CES1P	SMD2835	CV Version	130	10.9W	24V	≥ 90	8mm	7.69mm (1LED)	IP20 IP67	☐ Warm White	2700/3000/3500K	1300-1350	E
QL-F2835X65SA-N-24-CES1P										☐ Nature White	3500/4000K	1350-1400	
QL-F2835X65SA-P-24-CES1P										☐ Pure White	5500/6500K	1400-1450	
QL-F2835X70SA-X-24-CES1P	SMD2835	CV Version	140	11.7W	24V	≥ 90	8mm	7.14mm (1LED)	IP20 IP67	☐ Warm White	2700/3000/3500K	1400-1450	E
QL-F2835X70SA-W-24-CES1P										☐ Nature White	3500/4000K	1450-1500	
QL-F2835X70SA-P-24-CES1P										☐ Pure White	5500/6500K	1500-1570	
QL-F2835X75SA-W-24-CES1P	SMD2835	CV Version	150	12.6W	24V	≥ 90	8mm	6.66mm (1LED)	IP20 IP67	☐ Warm White	2700/3000/3500K	1500-1570	E
QL-F2835X75SA-N-24-CES1P										☐ Nature White	3500/4000K	1570-1620	
QL-F2835X75SA-P-24-CES1P										☐ Pure White	5500/6500K	1620-1680	
QL-F2835X80SA-W-24-CES1P	SMD2835	CV Version	160	13.4W	24V	≥ 90	8mm	6.25mm (1LED)	IP20 IP67	☐ Warm White	2700/3000/3500K	1650-1700	E
QL-F2835X80SA-N-24-CES1P										☐ Nature White	3500/4000K	1700-1750	
QL-F2835X80SA-P-24-CES1P										☐ Pure White	5500/6500K	1750-1800	
QL-F2835X85SA-W-24-CES1P	SMD2835	CV Version	170	14.2W	24V	≥ 90	10mm	5.88mm (1LED)	IP20 IP67	☐ Warm White	2700/3000/3500K	1750-1800	E
QL-F2835X85SA-N-24-CES1P										☐ Nature White	3500/4000K	1800-1850	
QL-F2835X85SA-P-24-CES1P										☐ Pure White	5500/6500K	1850-1900	
QL-F2835X90SA-W-24-CES1P	SMD2835	CV Version	180	15.1W	24V	≥ 90	10mm	5.55mm (1LED)	IP20 IP67	☐ Warm White	2700/3000/3500K	1850-1900	E
QL-F2835X90SA-N-24-CES1P										☐ Nature White	3500/4000K	1900-1960	
QL-F2835X90SA-P-24-CES1P										☐ Pure White	5500/6500K	1950-2015	
QL-F2835X95SA-W-24-CES1P	SMD2835	CV Version	190	16W	24V	≥ 90	10mm	5.26mm (1LED)	IP20 IP67	☐ Warm White	2700/3000/3500K	1970-2020	E
QL-F2835X95SA-N-24-CES1P										☐ Nature White	3500/4000K	2020-2070	
QL-F2835X95SA-P-24-CES1P										☐ Pure White	5500/6500K	2070-2130	
QL-F2835X100SA-W-24-CES1P	SMD2835	CV Version	200	16.8W	24V	≥ 90	10mm	5mm (1LED)	IP20 IP67	☐ Warm White	2700/3000/3500K	2100-2150	E
QL-F2835X100SA-N-24-CES1P										☐ Nature White	3500/4000K	2150-2200	
QL-F2835X100SA-P-24-CES1P										☐ Pure White	5500/6500K	2200-2240	
QL-F2835X120SA-W-24-CES1P	SMD2835	CV Version	240	20W	24V	≥ 90	10mm	4.16mm (1LED)	IP20 IP67	☐ Warm White	2700/3000/3500K	2400-2500	E
QL-F2835X120SA-N-24-CES1P										☐ Nature White	3500/4000K	2500-2600	
QL-F2835X120SA-P-24-CES1P										☐ Pure White	5500/6500K	2600-2670	

Remark: X stands for waterproof version, A stands for IP20 non-waterproof version, C stands for IP67 waterproof version.

CC means Constant Current version, CV means Constant Voltage version.



1LED Cutting DC12V LED Flexible Strips



Features:

- LED: SMD5050
- Constant voltage version
- LED Quantity: 60LED/m
- Power: 14.4W/m
- Voltage: DC12V
- Color: Warm White, Nature White, Pure White, Red, Yellow, Green, Blue
- Waterproof: IP20/IP54/IP67/IP68
- Cutting: 1LED cutting

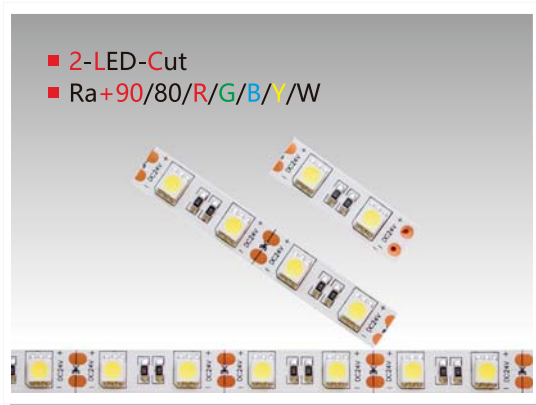
Dimension Drawings:



Model No.	LED Type	CC/CV	LED Qty	Power (W/m)	Voltage	PCB Width	Water-proof	Color	λ (Nm)/(CT:K)	Lumen (lm/m)
QL-F5050X30-P-12-1P	SMD5050	CV Version	60	14.4W	12V	10mm	IP20-IP68	□ Pure White	6000-7000K	1250-1300
QL-F5050X30-N-12-1P	SMD5050	CV Version	60	14.4W	12V	10mm	IP20-IP68	□ Nature White	4000-4500K	1200-1250
QL-F5050X30-W-12-1P	SMD5050	CV Version	60	14.4W	12V	10mm	IP20-IP68	□ Warm White	2200/2700/3000K	1100-1200
QL-F5050X30-R-12-1P	SMD5050	CV Version	60	14.4W	12V	10mm	IP20-IP68	■ Red	620-630	420-450
QL-F5050X30-Y-12-1P	SMD5050	CV Version	60	14.4W	12V	10mm	IP20-IP68	■ Yellow	585-595	420-450
QL-F5050X30-B-12-1P	SMD5050	CV Version	60	14.4W	12V	10mm	IP20-IP68	■ Blue	455-470	300-320
QL-F5050X30-G-12-1P	SMD5050	CV Version	60	14.4W	12V	10mm	IP20-IP68	■ Green	510-525	950-1000

Remark: X stands for waterproof version, A stands for non-waterproof version, B and S for IP64 waterproof version
 C stands for IP67 waterproof version, D stands for IP68 waterproof version
 CC means constant current version, CV means Constant Voltage Version

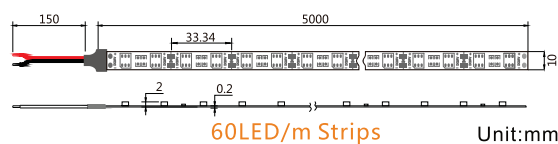
2LED Cutting DC24V LED Flexible Strips



Features:

- LED: SMD5050
- Constant voltage version
- LED Quantity: 60LED/m
- Power: 14.4W/m
- Voltage: DC24V
- Color: Warm White, Nature White, Pure White, Red, Yellow, Green, Blue
- Waterproof: IP20/IP54/IP67/IP68
- Cutting: 2LED cutting

Dimension Drawings:



Model No.	LED Type	CC/CV	LED Qty	Power (W/m)	Voltage	PCB Width	Water-proof	Color	λ (Nm)/(CT:K)	Lumen (lm/m)
QL-F5050X30-P-24-2P	SMD5050	CV Version	60	14.4W	24V	10mm	IP20-IP68	□ Pure White	6000-7000K	1250-1300
QL-F5050X30-N-24-2P	SMD5050	CV Version	60	14.4W	24V	10mm	IP20-IP68	□ Nature White	4000-4500K	1200-1250
QL-F5050X30-W-24-2P	SMD5050	CV Version	60	14.4W	24V	10mm	IP20-IP68	□ Warm White	2200/2700/3000K	1100-1200
QL-F5050X30-R-24-2P	SMD5050	CV Version	60	14.4W	24V	10mm	IP20-IP68	■ Red	620-630	420-450
QL-F5050X30-Y-24-2P	SMD5050	CV Version	60	14.4W	24V	10mm	IP20-IP68	■ Yellow	585-595	420-450
QL-F5050X30-B-24-2P	SMD5050	CV Version	60	14.4W	24V	10mm	IP20-IP68	■ Blue	455-470	300-320
QL-F5050X30-G-24-2P	SMD5050	CV Version	60	14.4W	24V	10mm	IP20-IP68	■ Green	510-525	950-1000

Remark: X stands for waterproof version, A stands for non-waterproof version, B and Sfor IP64 waterproof version
 C stands for IP67 waterproof version, D stands for IP68 waterproof version
 CC means constant current version, CV means Constant Voltage Version

1LED Cutting DC24V Flexible Strips

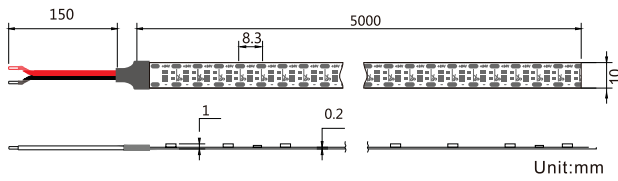


- 1-LED-Cut
- Ra+95
- CV Version

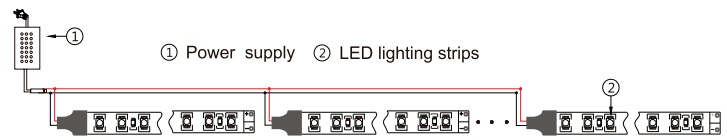
Features:

- LED: CRI \geq 95 SMD2835
- Constant Voltage Version
- LED Qty: 120LED/m, 60LED/m
- Power: 28.8W/m, 14.4W/m
- Voltage: DC24V
- Color: Warm White, Nature White, Pure White
- Waterproof: IP20, IP67
- Cutting: 1 LED cutting

Dimension Drawings:



Connections:



Model No.	LED Type	CC/CV	LED Qty	Power (W/pcs)	Voltage	CRI(Ra)	PCB Size	Waterproof	λ (Nm)/(CT:K)	Lumen (lm/pcs)
QL-F2835X30SA-W-24-951P	SMD2835	CV	60	14.4W	24V	\geq 95	10mm	IP20/IP67	2700/3000K	900-1000
QL-F2835X30SA-N-24-951P	SMD2835	CV	60	14.4W	24V	\geq 95	10mm	IP20/IP67	4000-4500K	1000-1100
QL-F2835X30SA-P-24-951P	SMD2835	CV	60	14.4W	24V	\geq 95	10mm	IP20/IP67	6000-6500K	1100-1200
QL-F2835A60SA-W-24-951P	SMD2835	CV	120	28.8W	24V	\geq 95	10mm	IP20	2700/3000K	2100-2250
QL-F2835A60SA-N-24-951P	SMD2835	CV	120	28.8W	24V	\geq 95	10mm	IP20	4000-4500K	2250-2400
QL-F2835A60SA-P-24-951P	SMD2835	CV	120	28.8W	24V	\geq 95	10mm	IP20	6000-6500K	2400-2550

Dim to Warm LED Strips

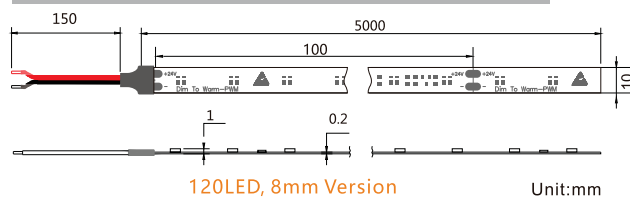


- Dim-To-Warm
- Ra+90
- CV Version

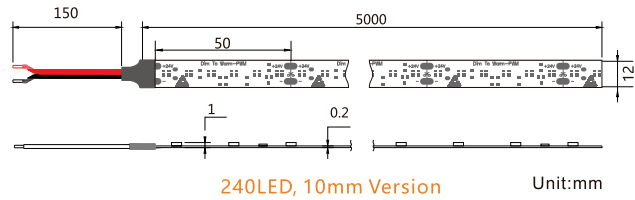
Features:

- LED: CRI \geq 90 SMD2216
- Constant Voltage Version
- Power: 10W/m, 20W/m
- Voltage: DC24V
- Color: 2700-6500K Dual White
- Waterproof: IP20, IP67

Dimension Drawings:



120LED, 8mm Version



240LED, 10mm Version

Model No.	LED Type	CC/CV	LED Qty	Power (W/m)	Voltage	CRI(Ra)	PCB Width	Cutting (mm)	Water proof	(Nm)/(CT:K)	Lumen (lm/m)
QL-F2216A60SA-DTW-24-PWM	SMD2216	CV Version	120	10W/m	24V	\geq 90	8mm	100mm (12LED)	IP20	Dim-to-Warm 1800-2800K	900-950
QL-F2216C60SA-DTW-24-PWM	SMD2216	CV Version	120	10W/m	24V	\geq 90	8mm	100mm (12LED)	IP67	Dim-to-Warm 1800-2800K	900-950
QL-F2216A120SA-DTW-24-PWM	SMD2216	CV Version	240	20W/m	24V	\geq 90	10mm	50mm (12LED)	IP20	Dim-to-Warm 1800-2800K	1800-1900
QL-F2216C120SA-DTW-24-PWM	SMD2216	CV Version	240	20W/m	24V	\geq 90	10mm	50mm (12LED)	IP67	Dim-to-Warm 1800-2800K	1800-1900



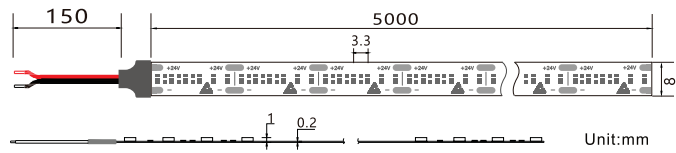
Spot-Free LED Flexible Strips



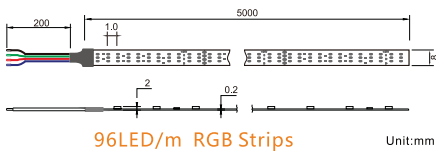
Features:

- LED: SMD5050, SMD2216 & SMD3528
- Constant Voltage Version
- LED Qty: 96LED/m, 300LED/m, 156LED/m, 240LED/m
- Power: 12W/m, 23W/m, 20W/m
- Voltage: DC24V
- Color: CCT-Adj, RGB, White, Red, Green, Blue, Yellow
- Waterproof: IP67
- Cutting: 6LED cutting for DC24V Version
- Spot-Free Version, Perfect Color and Brightness Uniform

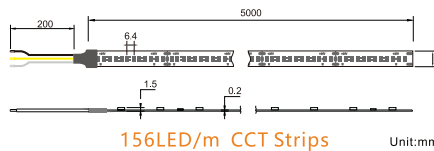
Dimension Drawings:



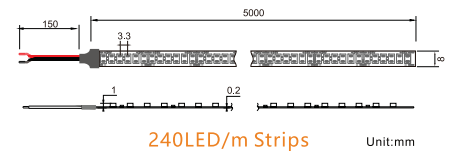
300LED/m Strips



96LED/m RGB Strips



156LED/m CCT Strips



240LED/m Strips

Model No.	LED Type	CC/CV	LED Qty	Power (W/m)	Voltage	CRI	PCB Width	Waterproof	Color	λ (Nm)/(CT:K)	Lumen (lm/m)
CCT Adj & RGB Series											
QL-F3528C78T-HA-24-M	SMD3528	CV Version	156LED/m	23W	24V	≥ 90	8mm	IP67	□□□CCT	2400-5000K	1400-1500
QL-F5050C48-C-24-M	SMD5050	CV Version	96LED/m	20W	24V	/	8mm	IP67	■ ■ ■ RGB	620-630 520-525 455-470	130-140 450-500 100-110
SMD2216 Series											
QL-F2216C150SA-W-24-M	SMD2216	CV Version	300LED/m	12W	24V	≥ 90	8mm	IP67	□ Warm White	2500-2600K	500-600
QL-F2216C150SA-N-24-M									□ Nature White	3400-3500K	600-650
QL-F2216C150SA-P-24-M									□ Pure White	5000-5200K	650-700
SMD3528 Series											
QL-F3528C120SAL-W-24-MS195	SMD3528	CV Version	240LED/m	12W	24V	≥ 95	8mm	IP67	□ Warm White	2400/2700K	800-900
QL-F3528C120SAL-N-24-MS195									□ Nature White	3500-3600K	900-1000
QL-F3528C120SAL-P-24-MS195									□ Pure White	5200-5500K	1000-1050
QL-F3528C120SAL-W-24-MS1	SMD3528	CV Version	240LED/m	12W	24V	≥ 90	8mm	IP67	□ Warm White	2400/2700K	850-950
QL-F3528C120SAL-N-24-MS1									□ Nature White	3500-3600K	950-1050
QL-F3528C120SAL-P-24-MS1									□ Pure White	5200-5500K	1050-1150
QL-F3528C120-W-24-MS1	SMD3528	CV Version	240LED/m	12W	24V	≥ 80	8mm	IP67	□ Warm White	2100/2400/2700K	800-900
QL-F3528C120-N-24-MS1									□ Nature White	3500-3600K	900-950
QL-F3528C120-P-24-MS1									□ Pure White	5200-5500K	950-1000
QL-F3528C120-B-24-MS1	SMD3528	CV Version	240LED/m	12W	24V	/	8mm	IP67	■ Blue	460-470	280-300
QL-F3528C120-G-24-MS1									■ Green	520-525	700-750
QL-F3528C120-R-24-MS1									■ Red	620-630	350-370
QL-F3528C120-Y-24-MS1									■ Yellow	585-595	350-370

Remark: CC means constant current version, CV means constant voltage version

160 Degree LED Flexible Strips



Features:

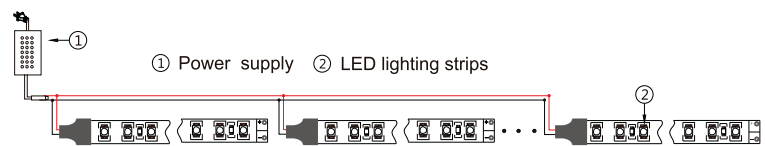
- LED: 160 Degree LED
- Power: 16.5W/m
- Voltage: DC24V
- Color: Warm White, Nature White, Pure White
- Waterproof: IP20
- Cutting: 1LED cut for DC12V, 2LED Cut for DC24V
- 160 degree light angle will bring super color uniform



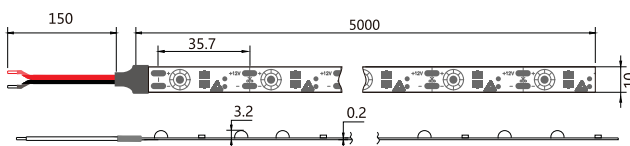
Applications:

- Cove Lighting
- Architectural decorative lighting
- Archway, canopy and bridge edge lighting
- Auditorium walkway lighting
- Backlighting for signage letters
- Channel letter lighting

Connections:

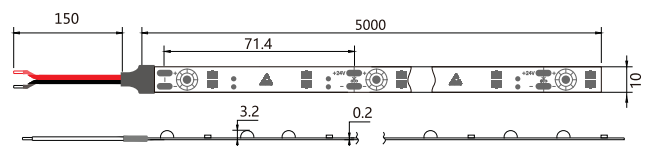


Dimension Drawings:



DC12V Version

Unit:mm



DC24V Version

Unit:mm

Model No.	LED Type	CC/CV	LED Qty	Power (W/m)	Voltage	PCB Width	Cutting (mm)	Water-proof	Color	λ (Nm)/(CT:K)	lumen (lm/m)
QL-F5050A14-W-12-160	160 Degree LED	CV Version	28	16.5W	12V	10mm	35.7	IP20	☐ Warm White	3000-3500K	1450-1500
☐ Nature White									4000-4500K	1500-1550	
☐ Pure White									6000-6500K	1550-1600	
QL-F5050A14-W-24-160	160 Degree LED	CV Version	28	16.5W	24V	10mm	71.42	IP20	☐ Warm White	3000-3500K	1450-1500
☐ Nature White									4000-4500K	1500-1550	
☐ Pure White									6000-6500K	1550-1600	

Remark: X stands for waterproof version, A stands for IP20 non-waterproof version, C stands for IP67 waterproof version.
CC means Constant Current version, CV means Constant Voltage



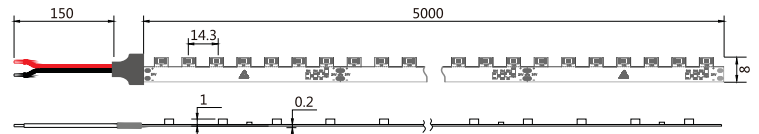
Angle-Adjustable LED Strips



Features:

- LED: SMD3528, SMD3535, SMD5630
- Constant Current and Constant Voltage Version
- LED Qty: 70LED/m
- Power: 15W/m, 14.4W/m, 7.2W/m, 4.8W/m
- Voltage: DC24V
- Color: Warm White, Nature White, Pure White, RGB, Red, Green, Blue, Yellow
- Waterproof: IP20 Non-waterproof
- Cutting: 7LED cutting for DC24V version

Dimension Drawings:

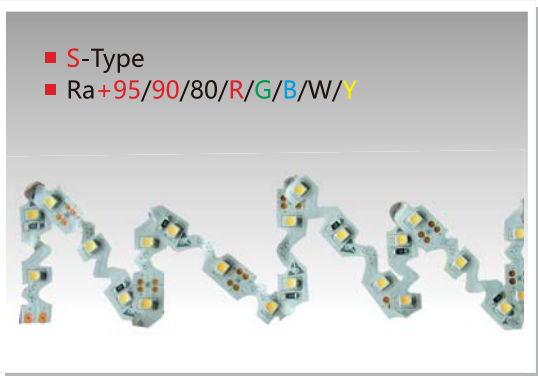


SMD5630 CC Strips Unit:mm

Model No.	LED Type	LED Qty	Power (W/m)	Voltage	CC/CV	CRI(Ra)	PCB Width (mm)	Water-proof	Color	λ (Nm)/(CT:K)	Lumen (lm/m)
QL-F5630A35SA-W-24C-AG	SMD5630	70	15W	24V	CC Version	≥95 ≥90	5+8mm	IP20	□ WarmWhite	2700/3000K	1350-1400
□ NatureWhite									4000-4500K	1450-1500	
□ Pure White									6000-6500K	1500-1600	
QL-F3535A35-C-24-AG	SMD3535	70	14.4W	24V	CV Version	/	5+8mm	IP20	RGB	/	600-700
QL-F3528A35SA-W-24-AG	SMD3528	70	7.2W	24V	CV Version	≥95 ≥90	5+8mm	IP20	□ WarmWhite	2700/3000/3500K	650-700
□ NatureWhite									4000-4500K	700-750	
□ Pure White									5000/6000K	750-800	
■ Red									620-630	150-170	
■ Yellow									585-595	150-170	
QL-F3528A35-N-24-AG	SMD3528	70	4.8W	24V	CV Version	/	5+8mm	IP20	■ Blue	455-470	110-130
■ Green									510-525	350-380	
QL-F3528A35-P-24-AG											
QL-F3528A35-R-24-AG											
QL-F3528A35-Y-24-AG											
QL-F3528A35-B-24-AG											
QL-F3528A35-G-24-AG											

Remark: CC means Constant Current version, CV means Constant Voltage version.

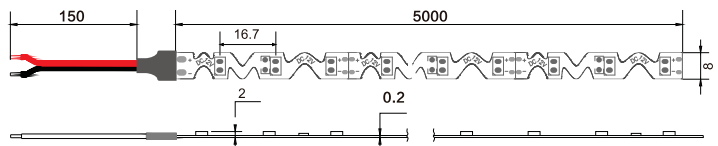
S-Type CRI≥95/90 Bendable LED Strips



Features:

- SMD3528
- Constant Voltage Version
- LED Qty: 60LED/m
- Power: 4.8W/m, 7.2W/m
- Voltage: DC12V/DC24V
- Color: Red, Green, Blue, Yellow, Warm White, Nature White, Pure White
- Waterproof: IP20 non-waterproof version
- Cutting: 6LED cutting for DC24V version, 3 LED cutting for DC12V version

Dimension Drawings:



60LED/m Strips Unit:mm

Model No.	LED Type	CC/CV	LED Qty	Power (W/m)	Voltage	CRI(Ra)	PCB Width	Water-proof	Color	(CT:K)	Lumen(lm/m)
QL-F3528A30SA-W-12/24-BD	SMD3528	CV Version	60	7.2W	12V/24V	≥95 ≥90	8mm	IP20	□ WarmWhite	2700/3000/3500K	550-600
□ NatureWhite									4000-4500K	600-650	
□ Pure White									5000/6000K	650-700	
QL-F3528A30-R-12/24-BD	SMD3528	CV Version	60	4.8W	12V/24V	/	8mm	IP20	■ Red	620-630	140-150
■ Yellow									585-595	140-150	
■ Green									455-470	300-330	
■ Blue									510-525	100-110	
QL-F3528A30-N-12/24-BD											
QL-F3528A30-P-12/24-BD											

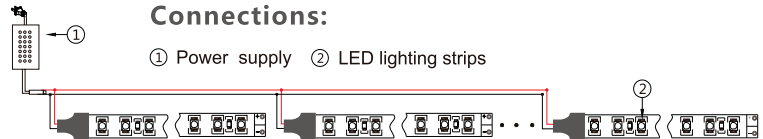
48V SMD3528 LED Flexible Strips



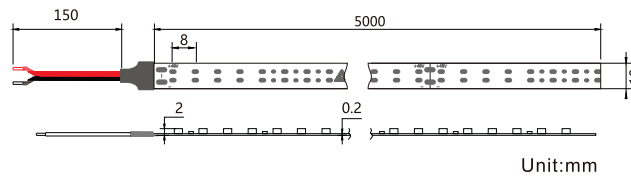
Features:

- LED: CRI95 and CRI90 SMD3528 LED
- LED Qty: 120LED/m
- Power: 14.4W/m, 9.6W/m
- Voltage: DC48V
- Color: Warm White, Nature White, Pure White
- Waterproof: IP20, IP54, IP67, IP68
- Cutting: 12LED for DC48V version

Connections:



Dimension Drawings:



Unit:mm

Model No.	LED Type	CC/CV	LED Qty	Power (W/m)	Voltage	CRI(Ra)	PCB Width	Water-proof	Color	λ (Nm)/(CT:K)	Lumen (lm/m)
QL-F3528X60SA-W-48-95	3528	CV Version	120	14.4W/m	48V	≥ 95	10mm	IP20	□ Warm White	2700K/3000K	1100-1200
≥ 90						IP54		□ Nature White	4000K	1200-1250	
						IP67		□ Pure White	6000K	1250-1350	
QL-F3528X60SAL-W-48	3528	CV Version	120	9.6W/m	48V	≥ 95	10mm	IP20	□ Warm White	2700K/3000K	800-850
≥ 90						IP54		□ Nature White	4000K	850-900	
≥ 80						IP67		□ Pure White	6000K	900-1000	
QL-F3528X60SAL-P-48								IP68			

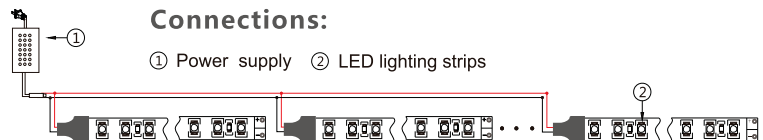
48V SMD2835 LED Flexible Strips



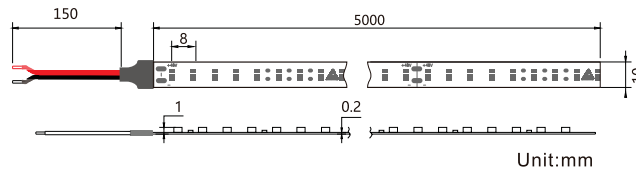
Features:

- LED: CRI95 and CRI90 SMD2835 LED
- LED Qty: 120LED/m
- Power: 19.2W/m
- Voltage: DC48V
- Color: Warm White, Nature White, Pure White
- Waterproof: IP20, IP67
- Cutting: 12LED cutting for DC48V version

Connections:



Dimension Drawings:



Unit:mm

Model No.	LED Type	CC/CV	LED Qty	Power (W/m)	Voltage	CRI(Ra)	PCB Width	Water-proof	Color	λ (Nm)/(CT:K)	Lumen (lm/m)
QL-F2835X60SA-W-48-95	2835	CV Version	120	19.2W	48V	≥ 95	10mm	IP20	□ Warm White	2700K/3000K	1650-1750
≥ 90						IP67		□ Nature White	4000K	1800-1900	
								□ Pure White	6000K	1900-2000	



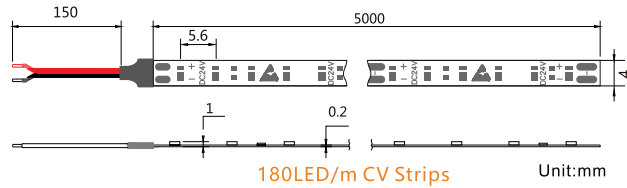
4mm Width LED Strips



Features:

- LED: 1-Step CRI \geq 90 SMD2216
- Constant Voltage Version
- LED Qty: 180LED/m, 120LED/m, 60LED/m
- Power: 14.4W/m, 9.6W/m, 4.8W/m
- Voltage: DC12V/DC24V
- Color: Warm White, Nature White, Pure White
- Cutting: 6LED for DC24V version, and 3LED for DC12V version

Dimension Drawings:



Model No.	LED Type	CC/CV	LED Qty	Power (W/m)	Voltage	CRI(Ra)	PCB Width	Waterproof	Color	λ (Nm)/(CT:K)	Lumen (lm/m)
QL-F2216A30SA-W-24-4OS	SMD2216	CV Version	60	4.8W	12V/24V	\geq 90	4mm	IP20	<input type="checkbox"/> Warm White	2200/2700K	340-360
<input type="checkbox"/> Nature White									3000/3500K	370-390	
<input type="checkbox"/> Pure White									6500K	400-420	
QL-F2216A60SA-W-24-4OS	SMD2216	CV Version	120	9.6W	12V/24V	\geq 90	4mm	IP20	<input type="checkbox"/> Warm White	2200/2700K	680-720
<input type="checkbox"/> Nature White									3000/3500K	740-780	
<input type="checkbox"/> Pure White									6500K	800-840	
QL-F2216A90SA-W-24-4OS	SMD2216	CV Version	180	14.4W	12V/24V	\geq 90	4mm	IP20	<input type="checkbox"/> Warm White	2200/2700K	1000-1100
<input type="checkbox"/> Nature White									3000/3500K	1100-1200	
<input type="checkbox"/> Pure White									6500K	1200-1300	

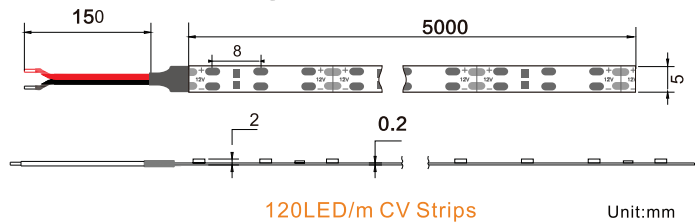
5mm Width LED Strips



Features:

- LED: SMD3528 120LED/m, 60LED/m
- Power: 9.6W/m, 4.8W/m
- Voltage: DC12/24V
- Color: Green, Blue, Warm White, Nature White, Pure White
- Waterproof: IP20 non-waterproof version
- Cutting: 6LED cutting for DC24V version, 3LED cutting for DC12V version

Dimension Drawings:



Model No.	LED Type	CC/CV	LED Qty	Power (W/m)	Voltage	PCB Width	Water-proof	CRI(Ra)	Color	(CT:K)	Lumen (lm/m)
QL-F3528A30SAL-W-12/24-5	SMD3528	CV Version	60	4.8W	12V/24V	5mm	IP20	\geq 95	<input type="checkbox"/> Warm White	2700/3000/3500K	360-420
\geq 90								<input type="checkbox"/> Nature White	4000-4500K	420-450	
/								<input type="checkbox"/> Pure White	5000/6000K	450-480	
QL-F3528A30-B-12/24-5	SMD3528	CV Version	120	9.6W	12V/24V	5mm	IP20	/	<input type="checkbox"/> Blue	455-470	100-110
/								<input type="checkbox"/> Green	510-525	300-330	
/								<input type="checkbox"/> Pure White	5000/6000K	900-950	
QL-F3528A60SAL-W-12/24-5	SMD3528	CV Version	60	4.8W	12V/24V	5mm	IP20	\geq 95	<input type="checkbox"/> Warm White	2700/3000/3500K	750-850
\geq 90								<input type="checkbox"/> Nature White	4000-4500K	850-900	
/								<input type="checkbox"/> Pure White	5000/6000K	900-950	
QL-F3528A60-B-12/24-5	SMD3528	CV Version	120	9.6W	12V/24V	5mm	IP20	/	<input type="checkbox"/> Blue	455-470	200-220
/								<input type="checkbox"/> Green	510-525	600-660	
/								<input type="checkbox"/> Pure White	5000/6000K	900-950	

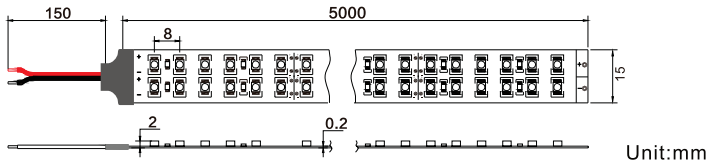
SMD3528 Double-Line LED Strips



Features:

- LED: SMD3528 240LED/m
- Power: 19.2W/m, 28.8W/m
- Voltage: DC24V
- Color: Red, Green, Blue, Yellow, Warm White, Nature White, Pure White
- Waterproof: IP20 non-waterproof version

Dimension Drawings:



Model No.	LED Type	CC/CV	LED Qty	Power (W/m)	Voltage	PCB Width	Water-proof	CRI(Ra)	Color	λ (Nm)/(CT:K)	Lumen (lm/m)
QL-F3528X120SA-P-24	SMD3528	CV Version	240	24V	IP20	28.8W/m	20mm	≥ 95 ≥ 90	□ Warm White	2700/3000/3500K	2350-2400
QL-F3528X120SA-N-24									□ Nature White	4000-4500K	2400-2600
QL-F3528X120SA-W-24									□ Pure White	5000/6000K	2600-2800
QL-F3528X120-R-24	SMD3528	CV Version	240	24V	IP20	19.2W/m	15mm	/	■ Red	620-630	650-700
QL-F3528X120-Y-24									■ Yellow	585-595	650-700
QL-F3528X120-B-24									■ Blue	455-470	400-450
QL-F3528X120-G-24									■ Green	510-525	1200-1300
QL-F3528X120-G-24									■ RGB	/	/

Remark: X stands for waterproof version, A stands for IP20 non-waterproof version, C stands for IP67 waterproof version.
CC means Constant Current version, CV means Constant Voltage

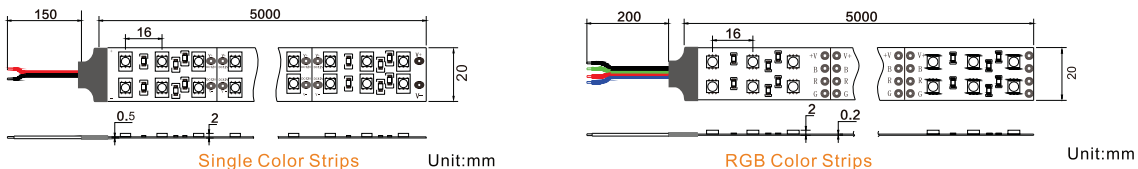
SMD5050 Double-Line LED Strips



Features:

- LED: SMD5050 120LED/m
- Power: 28.8W/m
- Voltage: DC24V
- Color: RGB, Red, Green, Blue Yellow, Warm White, Nature White, Pure White
- Waterproof: IP20 non-waterproof version

Dimension Drawings:



Model No.	LED Type	CC/CV	LED Qty	Voltage	Water-proof	Power (W/m)	PCB Width	CRI(Ra)	Color	λ (Nm)/(CT:K)	Lumen (lm/m)
QL-F5050X60SA-W-24	SMD5050	CV Version	120	24V	IP20	28.8W	20mm	≥ 90	□ Warm White	2700/3000K	2300-2400
QL-F5050X60SA-N-24									□ Nature White	4000-4500K	2400-2500
QL-F5050X60SA-P-24									□ Pure White	6000-7000K	2500-2600
QL-F5050X60-R-24	SMD5050	CV Version	120	24V	IP20	28.8W	20mm	/	■ Red	620-630	860-900
QL-F5050X60-Y-24									■ Yellow	585-595	860-900
QL-F5050X60-B-24									■ Blue	455-470	600-650
QL-F5050X60-G-24									■ Green	510-525	1900-2000
QL-F5050X60-C-24									■ RGB	/	1100-1200

Remark: X stands for waterproof version, A stands for IP20 non-waterproof version, C stands for IP67 waterproof version.
CC means Constant Current version, CV means Constant Voltage version. Itage version.



CRI ≥ 90 SMD3528 Dual White LED Strips

EcoDesign

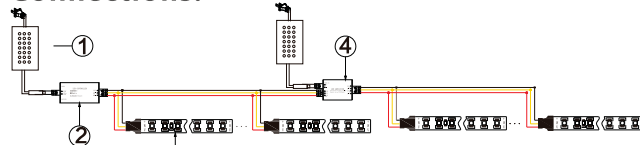
- Ra+90
- CC/CV Version



Features:

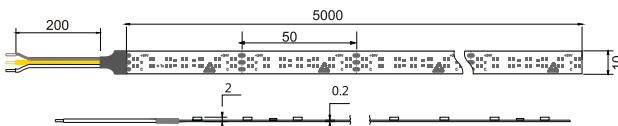
- LED: CRI ≥ 90 SMD3528
- DC24V Constant voltage version
- LED Qty: 156LED/m, 140LED/m, 120LED/m, 60LED/m
- Power: 23W/m, 19.2W/m, 19W/m, 9.6W/m
- Voltage: DC12V, DC24V
- Color: Dual White (2500-6000K)
- Waterproof: IP20, IP67
- Comply with the European ErP EcoDesign regulation.

Connections:

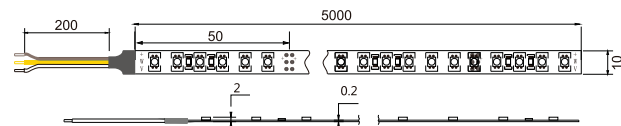


- ① Power supply
- ② LED Controller
- ③ LED strips
- ④ Amplifier

Dimension Drawings:



140LED/m Version Unit:mm



120LED/m Version Unit:mm

Model No.	LED Type	CC/CV	LED Qty	Power (W/m)	Voltage (DC)	CRI (Ra)	PCB Width	Cutting (mm)	LED Qty (pcs/group)	Water proof	Color	(CT:K)	Lumen (lm/m)	Energy efficiency class
QL-F3528X70T-HA-24	SMD3528 2-in-1	CV Version	140	19W	24V	≥90	10mm	50mm	7LED	IP20/67	Dual White	2500-6000K	1750-1850	F
QL-F3528X78T-HA-24	SMD3528 2-in-1	CV Version	156	23W	24V	≥90	8mm	38.46mm	6LED	IP20/67	Dual White	2500-6000K	1700-1800	/
QL-F3528X60T-HA-12/24	SMD3528 2-in-1	CV Version	120	19.2W	12V/24V	≥90	10mm	25/50mm	6LED	IP20/67	Dual White	2500-6000K	1300-1400	/
QL-F3528X30T-HA-12/24	SMD3528 2-in-1	CV Version	60	9.6W	12V/24V	≥90	10mm	50/100mm	6LED	IP20/67	Dual White	2500-6000K	600-700	/
QL-F3528X30T-HA-24C	SMD3528 2-in-1	CC Version	60	9.6W	12V/24V	≥90	10mm	50/100mm	6LED	IP20/67	Dual White	2500-6000K	600-700	/

CRI ≥ 90 SMD5050 Dual White LED Strips

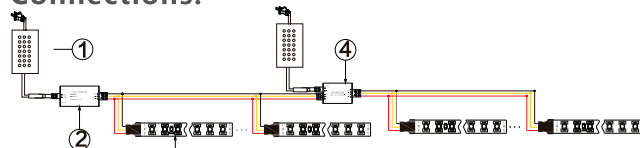
- Ra+90
- CC/CV Version



Features:

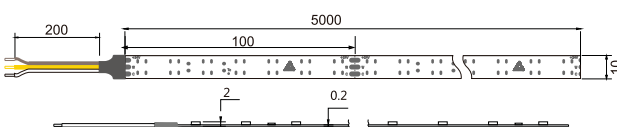
- LED: CRI ≥ 90 SMD5050
- DC24V Constant voltage version
- LED Qty: 70LED/m, 84LED/m
- Power: 14W/m, 20W/m
- Voltage: DC12V, DC24V
- Color: Dual White (2700-6500K)
- Waterproof: IP20, IP67
- Comply with the European ErP EcoDesign regulation.

Connections:

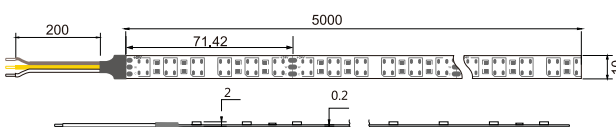


- ① Power supply
- ② LED Controller
- ③ LED strips
- ④ Amplifier

Dimension Drawings:



70LED/m Version Unit:mm



84LED/m Version Unit:mm

Model No.	LED Type	CC/CV	LED Qty	Power (W/m)	Voltage (DC)	CRI (Ra)	PCB Width	Cutting (mm)	LED Qty (pcs/group)	Water proof	Color	(CT:K)	Lumen (lm/m)	Energy efficiency class
QL-F5050X35T-HA-12/24	SMD5050 2-in-1	CV Version	70	14W	24V	≥90	10mm	100mm	7LED	IP20/67	Dual White	2700-6000K	1450-1550	F
QL-F5050X42T-HA-12/24	SMD5050 2-in-1	CV Version	84	20W	24V	≥90	10mm	71.42mm	6LED	IP20/67	Dual White	2700-6000K	1700-1800	/

2-LED-Cut SMD2835 Dual White LED Strips

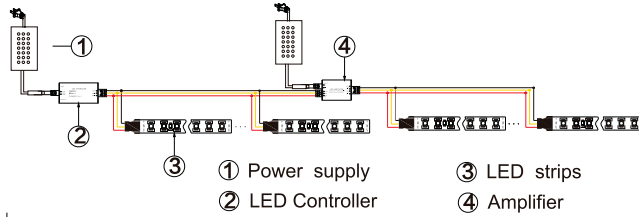
EcoDesign



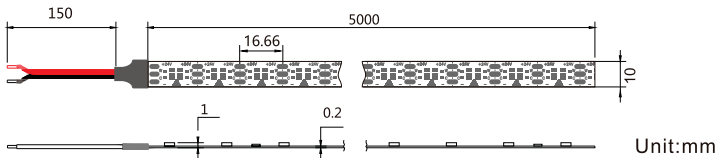
Features:

- LED: CRI≥95, CRI≥90 SMD2835
- Power: 14.4W/m, 28.8W/m
- Voltage: DC24V
- Color: 2700-6500K Dual White
- Waterproof: IP20, IP67
- Comply with the European ErP EcoDesign regulation.

Connections:

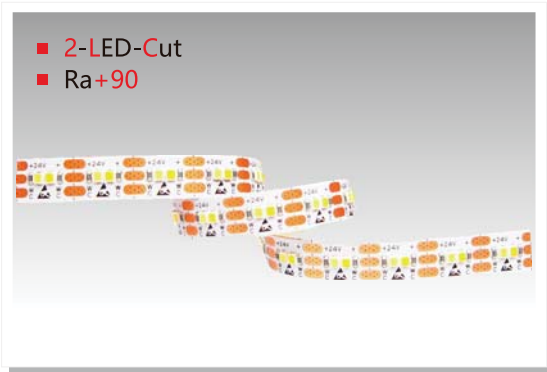


Dimension Drawings:



Model No.	LED Type	CC/CV	LED Qty	Power (W/m)	Voltage (DC)	CRI (Ra)	PCB Width	Cutting (mm)	Water proof	Color	(CT:K)	Lumen (lm/m)	Energy efficiency class
QL-F2835A60TSA-H-24-CES2P	SMD2835	CV Version	120	14.4W	24V	≥90	10mm	16.66mm 2LED	IP20	□□□Dual White	2700-6500K	1600-1740	E
QL-F2835C60TSA-H-24-CES2P	SMD2835	CV Version	120	14.4W	24V	≥90	10mm	16.66mm 2LED	IP67	□□□Dual White	2700-6500K	1600-1740	E
QL-F2835A60TSA-H-24-952P	SMD2835	CV Version	120	28.8W	24V	≥95	10mm	16.66mm 2LED	IP20	□□□Dual White	2700-6000K	2450-2500	/
QL-F2835C60TSA-H-24-952P	SMD2835	CV Version	120	28.8W	24V	≥95	10mm	16.66mm 2LED	IP67	□□□Dual White	2700-6000K	2450-2500	/

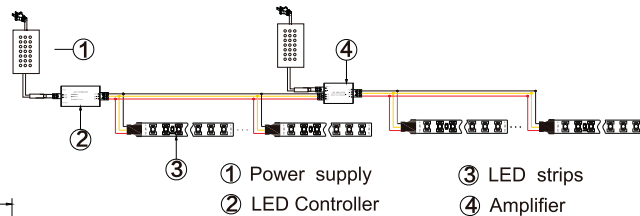
2-LED-Cut SMD2525 Dual White LED Strips



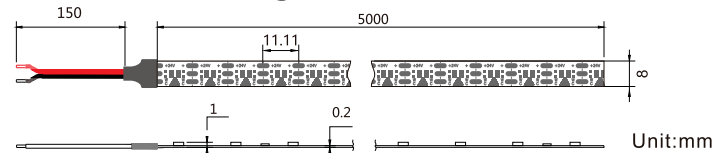
Features:

- LED: CRI≥90 SMD2525
- Power: 15.1W/m
- Voltage: DC24V
- Color: 2700-6500K Dual White
- Waterproof: IP20, IP67
- Comply with the European ErP EcoDesign regulation.

Connections:



Dimension Drawings:



Model No.	LED Type	CC/CV	LED Qty	Power (W/m)	Voltage (DC)	CRI (Ra)	PCB Width	Cutting (mm)	Water proof	Color	(CT:K)	Lumen (lm/m)	Energy efficiency class
QL-F2525A90TSA-H-24-CES2P	SMD2525	CV Version	180	15.1W	24V	≥90	8mm	11.11mm 2LED	IP20	□□□Dual White	2700-6500K	1350-1450	F
QL-F2525C90TSA-H-24-CES2P	SMD2525	CV Version	180	15.1W	24V	≥90	8mm	11.11mm 2LED	IP67	□□□Dual White	2700-6500K	1350-1450	F



CRI ≥ 90 SMD2216/2016 Dual White LED Strips



- Ra+90
- CC/CV Version

Features:

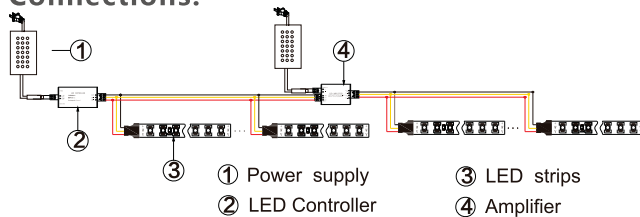
- LED: CRI≥90 SMD2016, SMD2216
- DC24V Constant voltage version
- LED Qty: 240LED/m, 252LED/m, 480LED/m, 504LED/m
- Power: 17W/m, 19.2W/m, 34W/m, 38.4W/m
- Voltage: DC24V
- Color: Dual White
- Waterproof: IP20, Ip67
- Comply with the European ErP EcoDesign regulation.



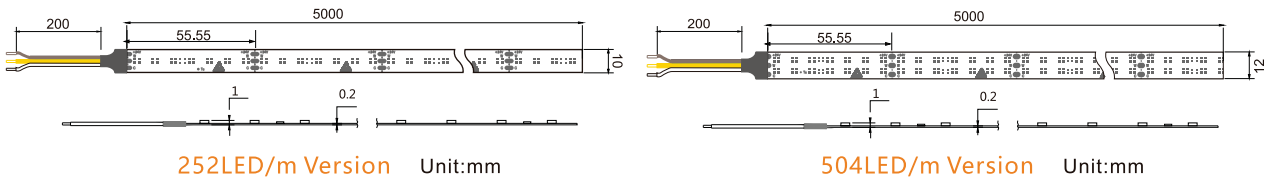
Applications:

- Cove Lighting
- Architectural decorative lighting
- Archway, canopy and bridge edge lighting
- Auditorium walkway lighting
- Backlighting for signage letters
- Channel letter lighting

Connections:



Dimension Drawings:



Model No.	LED Type	CC/CV	LED Qty	Power (W/m)	Voltage (DC)	CRI (Ra)	PCB Width	Cutting (mm)	Water proof	Color	(CT:K)	Lumen (lm/m)	Energy efficiency class
QL-F2016X126TSA-H-24-CES	SMD2016	CV Version	252	17W	24V	≥90	10mm	55.55mm 14LED	IP20/67	□□□Dual White	2700-6500K	1660-1760	F
QL-F2016X252TSA-H-24-CES	SMD2016	CV Version	504	34W	24V	≥90	12mm Double-Row	55.55mm 28LED	IP20/67	□□□Dual White	2700-6500K	3420-3520	F
QL-F2216X126TSA-H-24-CES	SMD2216	CV Version	252	17W	24V	≥90	10mm	55.55mm 14LED	IP20/67	□□□Dual White	2700-6500K	1660-1760	F
QL-F2216X252TSA-H-24-CES	SMD2216	CV Version	504	34W	24V	≥90	12mm Double-Row	55.55mm 28LED	IP20/67	□□□Dual White	2700-6500K	3420-3520	F
QL-F2216X120TSA-H-12	SMD2216	CV Version	240	19.2W	12V	≥90	10mm	25mm 6LED	IP20/67	□□□Dual White	2700-6500K	1500-1600	/
QL-F2216X120TSA-H-24	SMD2216	CV Version	240	19.2W	24V	≥90	10mm	50mm 12LED	IP20/67	□□□Dual White	2700-6500K	1500-1600	/
QL-F2216X240TSA-H-12	SMD2525	CV Version	480	38.4W	12V	≥90	12mm Double-Row	25mm 12LED	IP20	□□□Dual White	2700-6500K	3000-3200	/
QL-F2216X240TSA-H-24	SMD2525	CV Version	480	38.4W	24V	≥90	12mm Double-Row	50mm 24LED	IP20	□□□Dual White	2700-6500K	3000-3200	/

Remark: X stands for waterproof version, A stands for IP20 non-waterproof version, C stands for IP67 waterproof version.
CC means Constant Current version, CV means Constant Voltage version. Itage version.

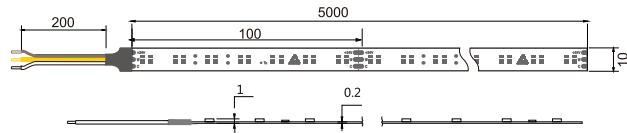
CRI ≥ 95 SMD2835 Dual White LED Strips

EcoDesign



Features:

- LED: CRI ≥ 95 SMD2835, CRI ≥ 90 SMD2835
- DC24V Constant voltage version
- LED Qty: 140LED/m
- Power: 9.2W/m, 19.2W/m
- Voltage: DC24V
- Color: Dual White(2700-6500K)
- Waterproof: IP20, IP67
- Comply with the European ErP EcoDesign regulation.

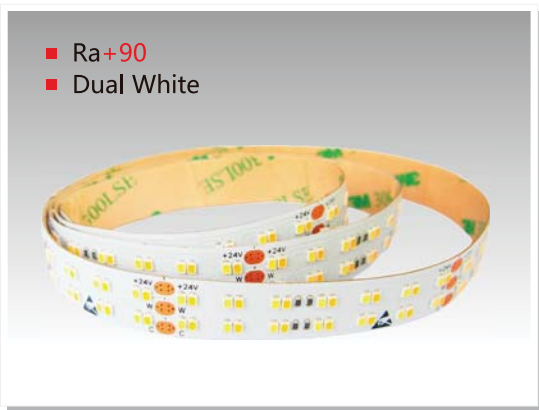


140LED/m Version Unit:mm

Dimension Drawings:

Model No.	LED Type	CC/CV	LED Qty	Power (W/m)	Voltage (DC)	CRI (Ra)	PCB Width	Cutting (mm)	Water proof	Color	(CT:K)	Lumen (lm/m)	Energy efficiency class
QL-F2835A70TSA-H-24-CES	SMD2835	CV Version	140	9.2W	24V	≥90	10mm	100mm 14LED	IP20 IP67	□□ Dual White	2700-6500K	1050	F
QL-F2835C70TSA-H-24-CES	SMD2835	CV Version	140	19.2W	24V	≥90	10mm	100mm 14LED	IP20 IP67	□□ Dual White	2700-6500K	2200	F
QL-F2835A70TSA-H-24-95	SMD2835	CV Version	140	19.2W	24V	≥95	10mm	100mm 14LED	IP20 IP67	□□ Dual White	2700-6500K	2200	F
QL-F2835C70TSA-H-24-95	SMD2835	CV Version	140	19.2W	24V	≥95	10mm	100mm 14LED	IP20 IP67	□□ Dual White	2700-6500K	2200	F

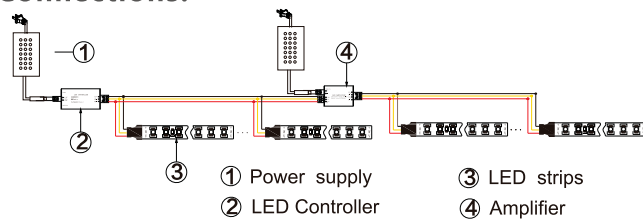
CRI ≥ 90 SMD2525 Dual White LED Strips



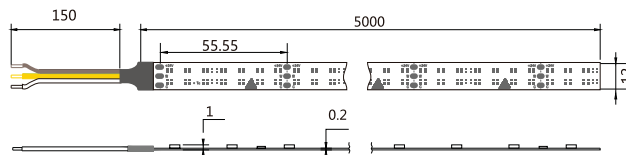
Features:

- LED: CRI ≥ 90 SMD2525
- Power: 17W/m, 34W/m
- Voltage: DC24V
- Color: 2700-6500K Dual White
- Waterproof: IP20, IP67
- Comply with the European ErP EcoDesign regulation.

Connections:



Dimension Drawings:

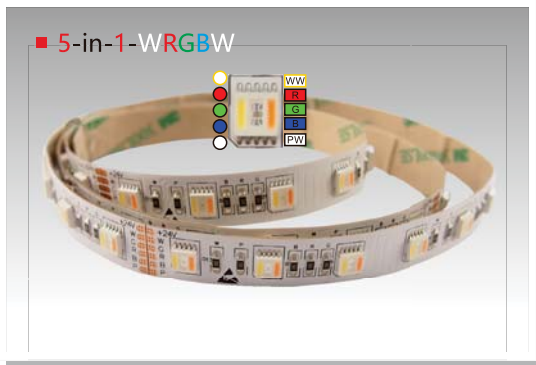


SMD 2525, 24V, 504LED Version Unit:mm

Model No.	LED Type	CC/CV	LED Qty	Power (W/m)	Voltage (DC)	CRI (Ra)	PCB Width	Cutting (mm)	Water proof	Color	(CT:K)	Lumen (lm/m)	Energy efficiency class
QL-F2525A126TSA-H-24-CES	SMD2525	CV Version	252	17W	24V	≥90	10mm	55.55mm 14LED	IP20	□□□ Dual White	2700-6500K	1700-1860	F
QL-F2525C126TSA-H-24-CES	SMD2525	CV Version	252	17W	24V	≥90	10mm	55.55mm 14LED	IP67	□□□ Dual White	2700-6500K	1700-1860	F
QL-F2525A252TSA-H-24-CES	SMD2525	CV Version	504	34W	24V	≥90	12mm Double-Line	55.55mm 28LED	IP20	□□□ Dual White	2700-6500K	3400-3700	F



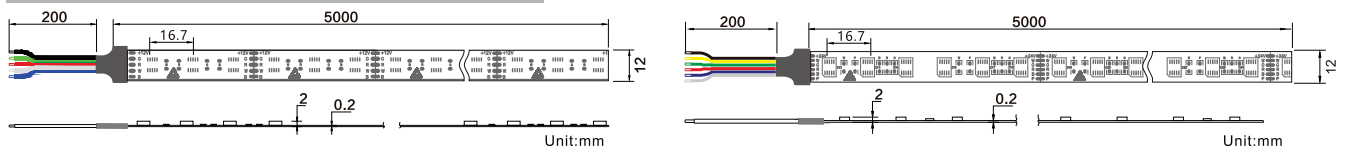
New WRGBW Strips with 5 Chips in One LED



Features:

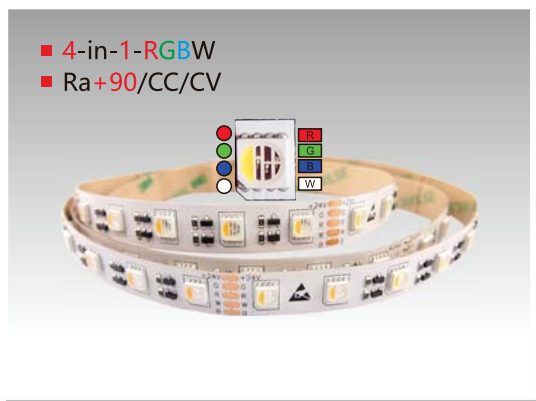
- LED: SMD5050 With Five Chips in One LED
- Constant Voltage Version
- LED Qty: 60LED/m
- Power: 24W/m
- Voltage: DC24V
- Color: RGB+Pure White +Warm White
- Waterproof: IP20, IP67
- Cutting: 3 LED cutting for DC12V Version, 6 LED cutting for DC24V Version

Dimension Drawings:



Model No.	LED Type	CC/CV	LED Qty	Power (W/pcs)	Voltage	PCB Size	Waterproof	Color	Lumen (lm/pcs)
QL-F5050X30-WCW-12/24	SMD5050	CV Version	60LED/m	24W	12V/24V	12mm	IP20 IP67	2200K+RGB+2200K 2700K+RGB+2700K 3000K+RGB+3000K	RGB: 530 White: 700-750
QL-F5050X30-NCN-12/24	SMD5050	CV Version	60LED/m	24W	12V/24V	12mm	IP20 IP67	4000K+RGB+4000K	RGB: 530 White: 750-780
QL-F5050X30-PCP-12/24	SMD5050	CV Version	60LED/m	24W	12V/24V	12mm	IP20 IP67	6000K+RGB+6000K	RGB: 530 White: 800-1000
QL-F5050X30-YCY-12/24	SMD5050	CV Version	60LED/m	24W	12V/24V	12mm	IP20 IP67	Amber+RGB+Amber	RGB: 530 Amber: 400-500
QL-F5050X30-WCP-12/24	SMD5050	CV Version	60LED/m	24W	12V/24V	12mm	IP20 IP67	2700K+RGB+6000K	RGB: 530 White: 800-1000

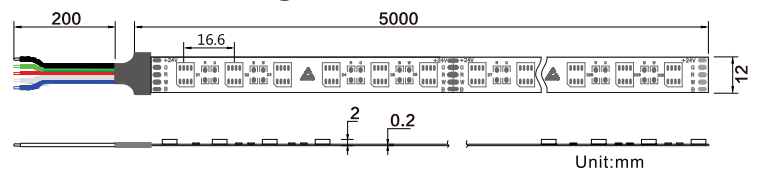
New RGBX Strips with 4 Chips in One LED



Features:

- LED: SMD5050 With Four Chips in One LED
- LED Quantity: 60LED/m, 72LED/m
- Power: 19.2W/m, 23W/m
- Voltage: DC12V, DC24V
- Color: RGB Warm White, RGB Nature White, RGB Pure White, RGB Amber
- Waterproof: IP20, IP67
- Cutting: 3LED cutting for DC12V, 6LED cutting for DC24V

Dimension Drawings:



Model No	LED Type	CC/CV	LED Qty	Power(W/m)	Voltage	PCB Width	Water-proof	Color	Lumen (lm/m)
QL-F5050X30-CP4-12/24	SMD5050	CC&CV Version	60	19.2W	12V/24V	12mm	IP20/IP67	RGB Pure White	880-930
QL-F5050X30-CN4-12/24								RGB Nature White	850-880
QL-F5050X30-CW4-12/24								RGB Warm White	750-850
QL-F5050X30-CY4-12/24								RGB Amber	550-600
QL-F5050X36-CP4-12/24	SMD5050	CV Version	72	23W	12V/24V	12mm	IP20/IP67	RGB Pure White	1080-1120
QL-F5050X36-CN4-12/24								RGB Nature White	1020-1050
QL-F5050X36-CW4-12/24								RGB Warm White	900-1000
QL-F5050X36-CY4-12/24								RGB Amber	690-720
QL-F5050X48-CP4-24	SMD5050	CV Version	96	30W	24V	12mm	IP20/IP67	RGB Pure White	1450-1500
QL-F5050X48-CN4-24								RGB Nature White	1400-1450
QL-F5050X48-CW4-24								RGB Warm White	1350-1400
QL-F5050X48-CY4-24								RGB Amber	900-960

2835 RGB LED Flexible Strips



Features:

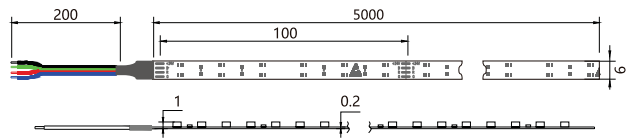
- LED: SMD2835
- Power: 17W/m, 8.5W/m
- Voltage: DC12V, DC24V
- Color: RGB Color
- Waterproof: IP20, IP67
- Cutting: 6LED cutting for DC24V version, 3LED cutting for DC12V version



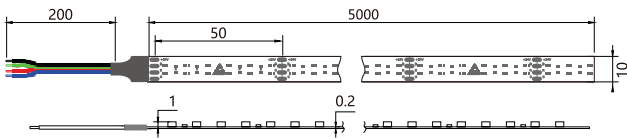
Applications:

- Cove Lighting
- Architectural decorative lighting
- Archway, canopy and bridge edge lighting
- Auditorium walkway lighting
- Backlighting for signage letters
- Channel letter lighting

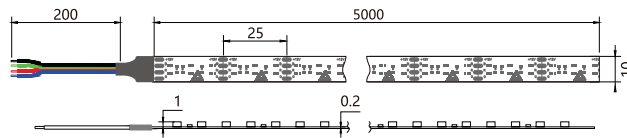
Dimension Drawings:



DC12V, 60LED Version Unit:mm



DC24V, 120LED Version Unit:mm



DC12V, 120LED Version Unit:mm

Model No.	LED Type	CC/CV	LED Qty	Power (W/m)	Cutting	Voltage	PCB Width	Water-proof	Color	λ (Nm)/(CT:K)	Lumen (lm/m)
QL-F2835X30-C-24-6	2835	CV Version	60	8.5W/m	100mm	24V	6mm	IP20	RGB	620-630	75-78
QL-F2835X30-C-24-8					100mm	24V	8mm	IP67		510-525	245-252
QL-F2835X30-C-12-8					50mm	12V	8mm			620-630	55-60
QL-F2835X60-C-24-6	2835	CV Version	120	17W/m	50mm	24V	6mm	IP20	RGB	620-630	150-156
QL-F2835X60-C-24-10					50mm	24V	10mm	IP67		510-525	490-504
QL-F2835X60-C-12-10					25mm	12V	10mm			620-630	110-120

Remark: X stands for waterproof version, A stands for IP20 version, B and S stands for IP54 version, C stands for IP67 version and D stands for IP68 version
CC means Constant Current version, CV means Constant Voltage version.



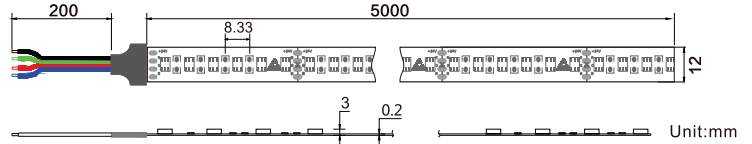
SMD3535 RGB LED Strips



Features:

- SMD3535
- Constant Voltage Version
- LED Qty: 120LED/m
- Power: 28.8W/m
- Voltage: DC24V
- Color: RGB
- Waterproof: IP20 non-waterproof version
- Cutting: 6LED cutting for DC24V version

Dimension Drawings:



Model No.	LED Type	CC/CV	LED Qty	Power (W/m)	Voltage	PCB Width	Water-proof	Color	λ (Nm)/ (CT:K)	Lumen (lm/m)
QL-F3535A60-C-24	SMD3535	CV Version	120	28.8W	24V	12mm	IP20	RGB	620-630 510-525 455-470	300-320 750-780 200-220

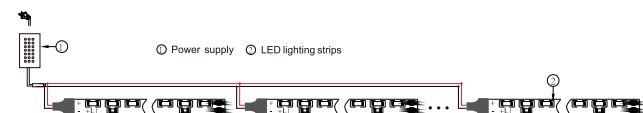
SMD335 Side View LED Strips



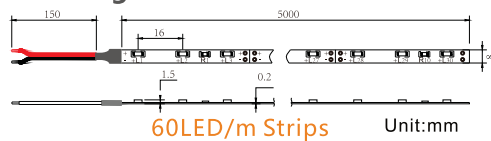
Features:

- LED: SMD335
- LED Quantity: 60LED/m, 120LED/m
- Power: 4.8W/m, 9.6W/m
- Voltage: DC12V, DC24V
- PCB Width: 8mm
- Color: Red, Blue, Green, Yellow, Warm White, Nature White, Pure White
- Waterproof: IP20, IP67
- Cutting: 3 LED cuttable for DC12V version, 6 LED cuttable for DC24V version

Connections:



Dimension Drawings:



Model No.	LED Type	CC/CV	LEDQty	Power (W/m)	Voltage	PCBWidth	Water-proof	Color	λ (Nm)/ (CT:K)	Lumen (lm/m)
QL-F335X30-R-12/24	335	CV Version	60	4.8W	12V/24V	8mm	IP20/IP67	Red	620-630	110-120
QL-F335X30-Y-12/24	335	CV Version	60	4.8W	12V/24V	8mm	IP20/IP67	Yellow	585-595	110-120
QL-F335X30-B-12/24	335	CV Version	60	4.8W	12V/24V	8mm	IP20/IP67	Blue	460-470	90-100
QL-F335X30-G-12/24	335	CV Version	60	4.8W	12V/24V	8mm	IP20/IP67	Green	520-525	240-300
QL-F335X30-P-12/24	335	CV Version	60	4.8W	12V/24V	8mm	IP20/IP67	Pure White	6000-7000K	400-450
QL-F335X30-N-12/24	335	CV Version	60	4.8W	12V/24V	8mm	IP20/IP67	Nature White	4000-4500K	350-400
QL-F335X30-W-12/24	335	CV Version	60	4.8W	12V/24V	8mm	IP20/IP67	Warm White	3000-3500K	300-350
QL-F335X60-R-12/24	335	CV Version	120	9.6W	12V/24V	8mm	IP20/IP67	Red	620-630	220-240
QL-F335X60-Y-12/24	335	CV Version	120	9.6W	12V/24V	8mm	IP20/IP67	Yellow	585-595	220-240
QL-F335X60-B-12/24	335	CV Version	120	9.6W	12V/24V	8mm	IP20/IP67	Blue	460-470	180-200
QL-F335X60-G-12/24	335	CV Version	120	9.6W	12V/24V	8mm	IP20/IP67	Green	520-525	480-600
QL-F335X60-P-12/24	335	CV Version	120	9.6W	12V/24V	8mm	IP20/IP67	Pure White	6000-7000K	800-850
QL-F335X60-N-12/24	335	CV Version	120	9.6W	12V/24V	8mm	IP20/IP67	Nature White	4000-4500K	750-800
QL-F335X60-W-12/24	335	CV Version	120	9.6W	12V/24V	8mm	IP20/IP67	Warm White	3000-3500K	700-750

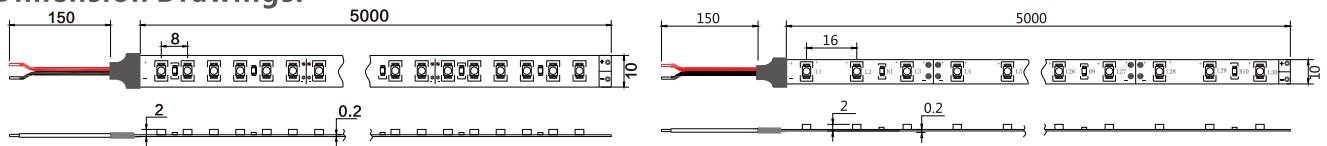
Infrared LED Strips



Features:

- LED: SMD3528
- Constant voltage version
- LED Qty: 60LED/m, 120LED/m
- Power: 4.8W/m, 9.6W/m
- Voltage: DC12V, DC24V
- Color: Infrared 840-845nm
- Waterproof: IP20, IP67
- Cutting: 6 LED for DC24V version, and 3LED for DC12V version

Dimension Drawings:



120LED/m CV Strips Unit:mm

60LED/m CV Strips Unit:mm

Model No.	LED Type	CC/CV	LED Qty	Power (W/m)	Voltage	PCB Width	Waterproof	Color	λ (Nm)/(CT:K)
QL-F3528A30-IR-12/24	SMD3528	CV Version	60LED/m	4.8W	12V/24V	10mm	IP20	Infrared Color	840-845nm
QL-F3528C30-IR-12/24							IP67		
QL-F3528A60-IR-12/24	SMD3528	CV Version	120LED/m	9.6W	12V/24V	10mm	IP20	Infrared Color	840-845nm
QL-F3528C60-IR-12/24							IP67		

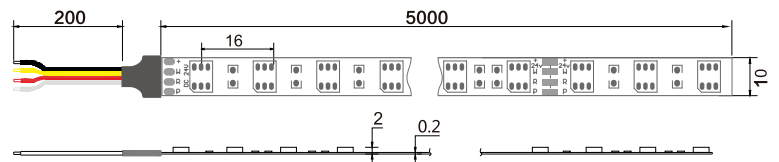
Fresh Food Lighting LED Strips



Features:

- LED: SMD5050
- Constant Voltage Version
- LED Qty: 60LED/m, 30LED/m
- Power: 14.4W/m, 7.2W/m
- Voltage: DC12V, DC24V
- Color: Warm White+Pure White+Red
- Waterproof: IP20, IP67
- Cutting: 6LED cutting for DC24V version, and 3 LED cutting for DC12V version

Dimension Drawings:



60LED/m CV Strips

Unit:mm

Model No.	LED Type	CC/CV	LED Qty	Voltage	Water-proof	Power (W/m)	PCB Width	Color	λ (Nm)/(CT:K)	Lumen (lm/m)
QL-F5050X30-F-12/24	SMD5050	CV Version	60	12V/24V	IP20/IP67	14.4W	10mm	WW+PW+Red	6000K, 2700K, 620-630	900-1000

Remark: X stands for waterproof version, A stands for IP20 version, C stands for IP67 version



Color Ratio Adjustable Plant-Grow LED Strips

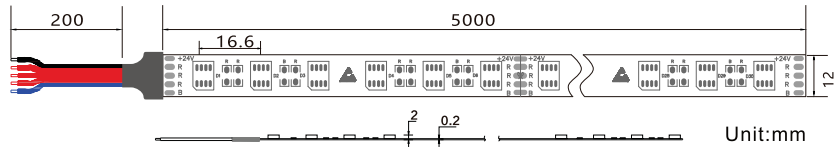


- Color-Ratio-Adj
- 4-in-1 Plant-Grow-Light

Features:

- LED: 4-in-1 SMD5050 LED, 3 red chips and 1 blue chip
- Constant voltage version
- LED Qty: 60LED/m
- Power: 19.2W/m
- Voltage: DC12V, DC24V
- Color: 3 red chips and 1 blue chip Red:660-665nm, Blue: 450-455nm
- Color Ratio is adjustable
- Waterproof: IP20, IP67
- Cutting: 6LED for DC24V version, and 3LED for DC12V version

Dimension Drawings:



Model No.	LED Type	CC/CV	LED Qty	Power (W/m)	Voltage	PCB Width	Waterproof	Color	λ (Nm)/(CT:K)	lumen (lm/m)
QL-F5050A30-GL4-12/24	SMD5050	CV Version	60	19.2W	12V/24V	12mm	IP20 IP67	Grow Light	Red:660-665nm Blue: 450-455nm	400-500
QL-F5050C30-GL4-12/24										

Plant-Grow LED Strips

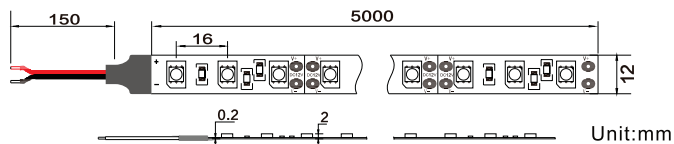


- Plant-Grow-Strip

Features:

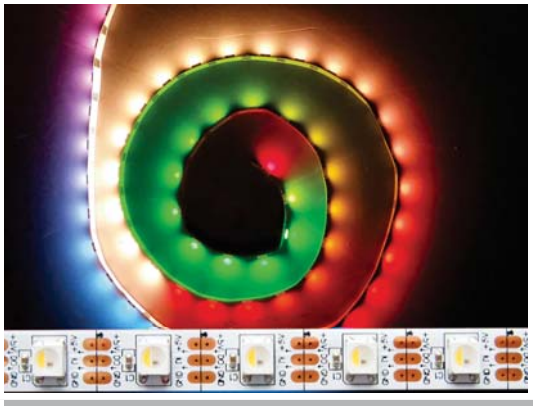
- LED: SMD5050 LED
- Constant voltage version
- LED Qty: 60LED/m
- Power: 14.4W/m
- Voltage: DC12V, DC24V
- Color: Red: 660-665nm, Blue: 450-455nm
- Waterproof: IP20, IP67
- Cutting: 6LED for DC24V version, and 3LED for DC12V version

Dimension Drawings:



Model No.	LED Type	CC/CV	LED Qty	Power (W/m)	Voltage	PCB Width	Waterproof	Color	λ (Nm)/(CT:K)	lumen (lm/m)
QL-F5050X30-R4B1-12/24	SMD5050	CV Version	60	14.4W	12V/24V	10mm	IP20 IP67	Grow Light R:B=4:1	Red:660-665nm Blue: 450-455nm	330
QL-F5050X30-R5B1-12/24								Grow Light R:B=5:1		340
QL-F5050X30-R9B1-12/24								Grow Light R:B=9:1		350

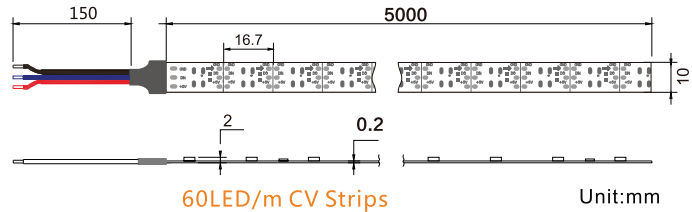
RGBX SMD5050 Digital LED Strips



Features:

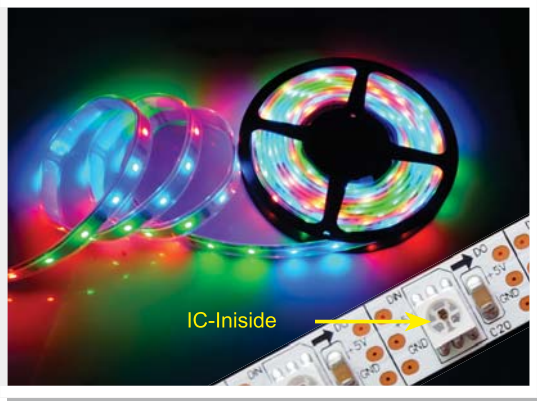
- LED: 4 Chips in 1 LED SMD5050, with IC in LED
- Constant Voltage Version
- LED Qty: 60LED/m, 30LED/m
- Power: 18W/m, 9W/m
- Voltage: DC5V
- Color: RGB+Warm White, RGB+Nature White, RGB+Pure White, RGB+Amber digital color
- Waterproof: IP20,IP67
- Cutting: 1 LED cutting for DC5V

Dimension Drawings:



Model No.	LED Type	CC/CV	LED Qty	Power (W/m)	Voltage	PCB Width	Water-proof	Color	λ (Nm)/(CT:K)
QL-F5050X15-CP4-5	SMD5050	CV Version	30	9W	5V	10mm	IP20 IP67	RGB+PW Dream	620-630 510-525 455-470 2700K
QL-F5050X15-CN4-5								RGB+NW Dream	620-630 510-525 455-470 4000K
QL-F5050X15-CW4-5								RGB+WW Dream	620-630 510-525 455-470 6000K
QL-F5050X15-CA4-5								RGB+Amber Dream	620-630 510-525 455-470 340-360
QL-F5050X30-CP4-5	SMD5050	CV Version	60	18W	5V	10mm	IP20 IP67	RGB+PW Dream	620-630 510-525 455-470 2700K
QL-F5050X30-CN4-5								RGB+NW Dream	620-630 510-525 455-470 4000K
QL-F5050X30-CW4-5								RGB+WW Dream	620-630 510-525 455-470 6000K
QL-F5050X30-CA4-5								RGB+Amber Dream	620-630 510-525 455-470 340-360

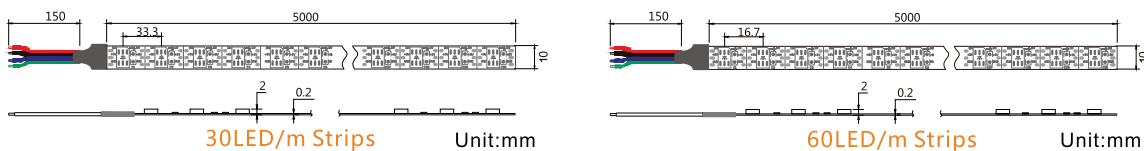
WS 2811 Digital Strips with IC inside LED



Features:

- LED: SMD5050
- LED Quantity: 30LED/m, 60LED/m
- Power: 9W/m, 18W/m
- Voltage: DC5V
- Color: Dream Color
- Waterproof: IP20, IP67
- Cutting: 1LED Cutting for DC5V

Dimension Drawings:



Model No.	LED Type	IC	CC/CV	LED Qty	Power (W/m)	Voltage	PCB Width	Water-proof	Color	λ (Nm)
QL-F5050A15-D-5	SMD5050	WS2811	CV Version	30	9W	5V	10mm	IP20	RGB+PW Dream Color	620-630 510-525 455-470
QL-F5050C15-D-5	SMD5050	WS2811	CV Version	30	9W	5V	10mm	IP67	RGB+NW Dream Color	620-630 510-525 455-470
QL-F5050A30-D-5	SMD5050	WS2811	CV Version	60	18W	5V	10mm	IP20	RGB+WW Dream Color	620-630 510-525 455-470
QL-F5050C30-D-5	SMD5050	WS2811	CV Version	60	18W	5V	10mm	IP67	RGB+Amber Dream Color	620-630 510-525 455-470