



## 4mm Width LED Strips

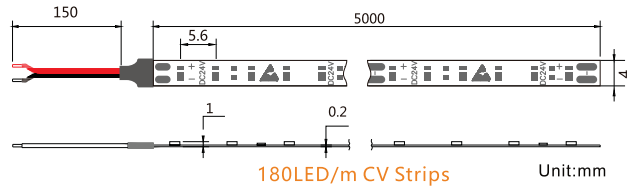


- 4mm
- 1-Step
- Ra+90

### Features:

- LED: 1-Step CRI $\geq$ 90 SMD2216
- Constant Voltage Version
- LED Qty: 180LED/m, 120LED/m, 60LED/m
- Power: 14.4W/m, 9.6W/m, 4.8W/m
- Voltage: DC12V/DC24V
- Color: Warm White, Nature White, Pure White
- Cutting: 6LED for DC24V version, and 3LED for DC12V version

### Dimension Drawings:



Model No.	LED Type	CC/CV	LED Qty	Power (W/m)	Voltage	CRI(Ra)	PCB Width	Waterproof	Color	$\lambda$ (Nm)/(CT:K)	Lumen (lm/m)
QL-F2216A30SA-W-24-4OS	SMD2216	CV Version	60	4.8W	12V/24V	$\geq$ 90	4mm	IP20	□ Warm White	2200/2700K	340-360
□ Nature White									3000/3500K	370-390	
□ Pure White									4000/5000K	400-420	
QL-F2216A60SA-W-24-4OS	SMD2216	CV Version	120	9.6W	12V/24V	$\geq$ 90	4mm	IP20	□ Warm White	2200/2700K	680-720
□ Nature White									3000/3500K	740-780	
□ Pure White									4000/5000K	800-840	
QL-F2216A90SA-W-24-4OS	SMD2216	CV Version	180	14.4W	12V/24V	$\geq$ 90	4mm	IP20	□ Warm White	2200/2700K	1000-1100
□ Nature White									3000/3500K	1100-1200	
□ Pure White									4000/5000K	1200-1300	

## 5mm Width LED Strips

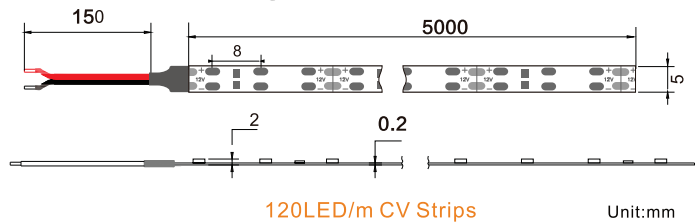


- 5mm
- Ra+95/90/80/B/G

### Features:

- LED: SMD3528 120LED/m, 60LED/m
- Power: 9.6W/m, 4.8W/m
- Voltage: DC12/24V
- Color: Green, Blue, Warm White, Nature White, Pure White
- Waterproof: IP20 non-waterproof version
- Cutting: 6LED cutting for DC24V version, 3LED cutting for DC12V version

### Dimension Drawings:



Model No.	LED Type	CC/CV	LED Qty	Power (W/m)	Voltage	PCB Width	Waterproof	CRI(Ra)	Color	(CT:K)	Lumen (lm/m)
QL-F3528A30SAL-W-12/24-5	SMD3528	CV Version	60	4.8W	12V/24V	5mm	IP20	$\geq$ 95	□ Warm White	2700/3000/3500K	360-420
$\geq$ 90								□ Nature White	4000-4500K	420-450	
/								□ Pure White	5000/6000K	450-480	
QL-F3528A30-B-12/24-5	SMD3528	CV Version	120	9.6W	12V/24V	5mm	IP20	/	■ Blue	455-470	100-110
/								■ Green	510-525	300-330	
/								□ Pure White	5000/6000K	900-950	
QL-F3528A60SAL-W-12/24-5	SMD3528	CV Version	60	4.8W	12V/24V	5mm	IP20	$\geq$ 95	□ Warm White	2700/3000/3500K	750-850
$\geq$ 90								□ Nature White	4000-4500K	850-900	
/								□ Pure White	5000/6000K	900-950	
QL-F3528A60-B-12/24-5	SMD3528	CV Version	120	9.6W	12V/24V	5mm	IP20	/	■ Blue	455-470	200-220
/								■ Green	510-525	600-660	
/								□ Pure White	5000/6000K	900-950	